

STANDARD ARRIVAL CHART INSTRUMENT (STAR) - ICAO

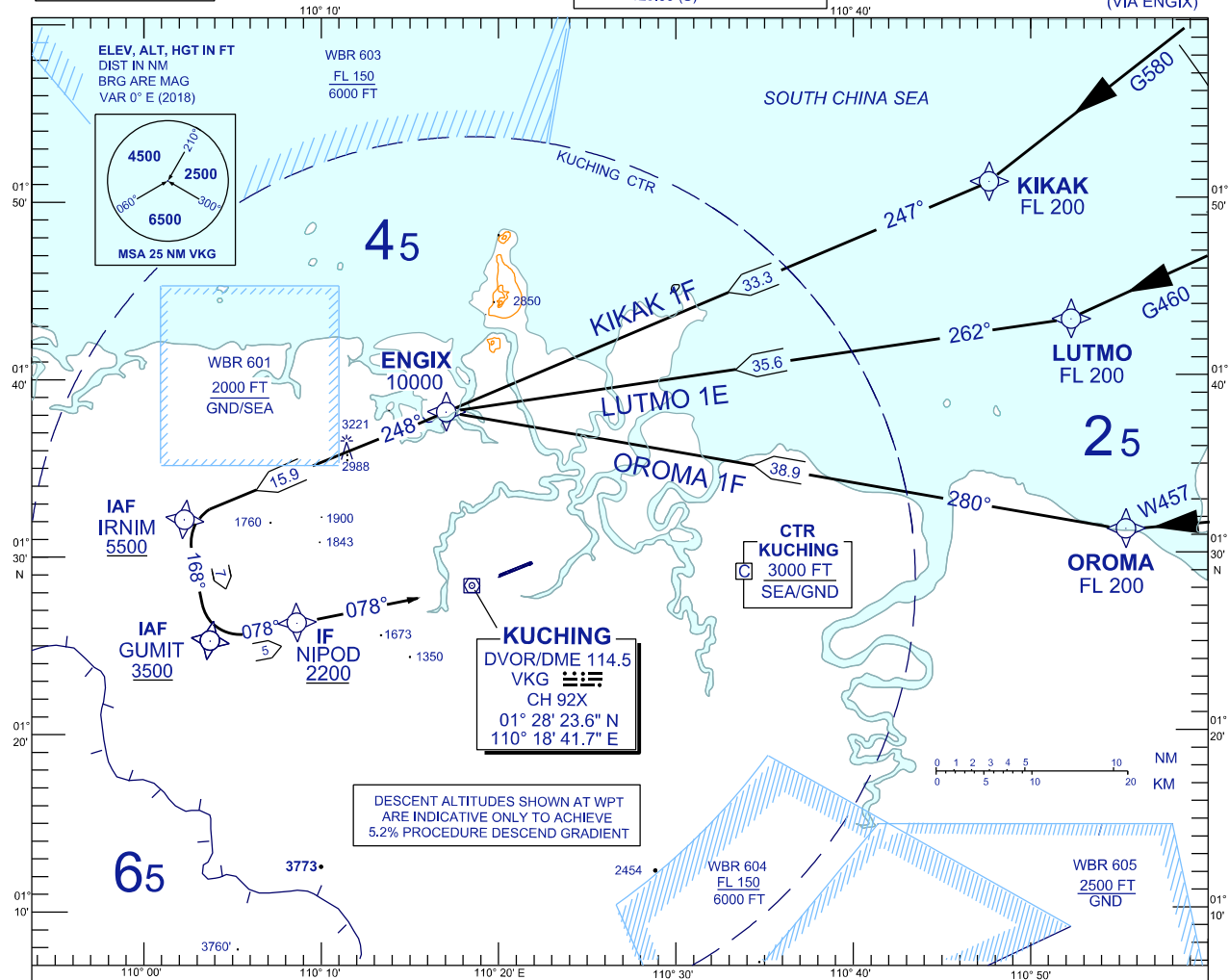
**KUCHING / KUCHING (WBGG)
RWY 07 (RNAV)**

TWR	118.1 (P)	SMC	121.9
	121.7 (S)	ATIS	128.4
APP	120.2 (P)	FIS	134.75
	123.85 (S)		
ACC	134.5 (P)		
	125.35 (S)		

TRANSITION ALTITUDE
11,000 FT

BANK ANGLE : 25° OR 3°/SEC

GUMIT ARRIVAL
(VIA ENGIK)



TRANSITIONS

- KIKAK ONE FOXTROT :** FROM KIKAK TRACK TO ENGIK, THEN TRACK TO IRNIM AND TO GUMIT
- LUTMO ONE ECHO:** FROM LUTMO TRACK TO ENGIK, THEN TRACK TO IRNIM AND TO GUMIT
- OROMA ONE FOXTROT :** FROM OROMA TRACK TO ENGIK, THEN TRACK TO IRNIM AND TO GUMIT
- GUMIT ARRIVAL :** FROM GUMIT TRACK TO NIPOD TO INTERCEPT RDL 258 VKG FOR VOR z RWY 07

VERTICAL RESTRICTIONS :

ADHERE TO VERTICAL RESTRICTIONS eg . 5500 = NOT BELOW 5500 FT ON DESCENT UNLESS SPECIFICALLY CANCELLED BY ATC

COMMUNICATIONS FAILURE :

- * SQUAWK 7600
- * IF UNDER PILOT NAVIGATION, CONTINUE ON STAR AND LAND
- * IF UNDER RADAR VECTORED, MAINTAIN VECTOR FOR 1 MINUTE, IF BELOW MSA, CLIMB TO MSA, THEN TRACK TO INTERCEPT CLEARED OR PREVIOUSLY ASSIGNED STAR AND LAND

CHANGES : REMOVE TAS < 250 KT FROM FREQUENCY BOX.