

**STANDARD DEPARTURE CHART
INSTRUMENT (SID) - ICAO**

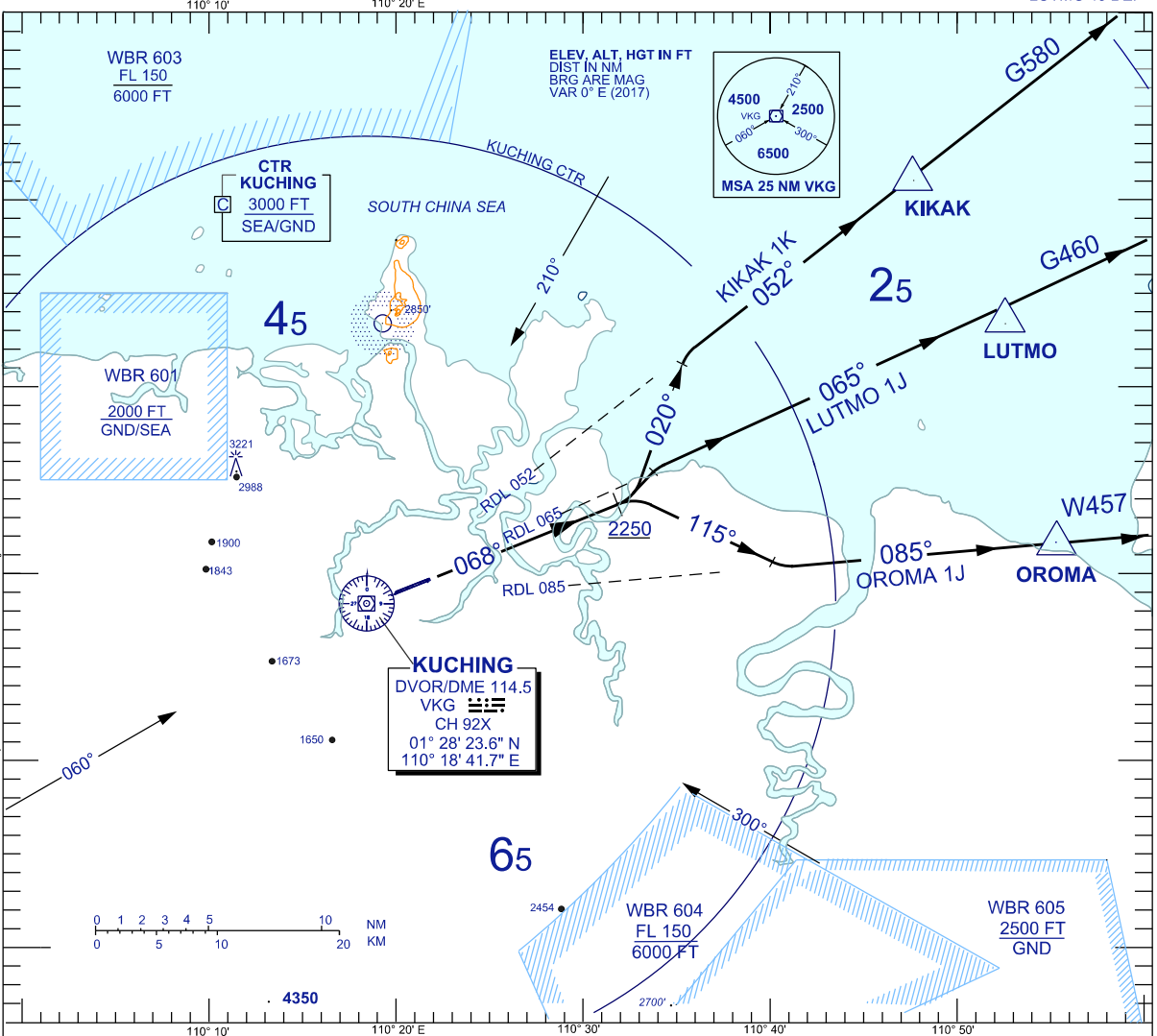
**KUCHING (WBGG)
RWY 07**

TRANSITION ALTITUDE
11,000 FT

TWR	118.1 (P) 121.7 (S)	SMC	121.9 ATIS 128.4
APP	120.2 (P) 123.85 (S)	FIS	134.75
ACC	134.5(P) 125.35 (S)		

OROMA 1J DEP KIKAK 1K DEP
LUTMO 1J DEP

BANK ANGLE : 15° ACHIEVED



RWY 07 DEP (RIGHT / LEFT TURN)

CLIMB ON TRACK 068°. AT/ABOVE 2250 FEET,

KIKAK ONE KILO DEPARTURE

FOR KIKAK

TRACK 020°, TO INTERCEPT RDL 052 TO KIKAK

LUTMO ONE JULIET DEPARTURE

FOR LUTMO

INTERCEPT RDL 065 TO LUTMO

OROMA ONE JULIET DEPARTURE

FOR OROMA

TURN RIGHT, TRACK 115° INTERCEPT RDL 085 TO OROMA

VERTICAL RESTRICTIONS :

ADHERE TO VERTICAL RESTRICTIONS eg . 2250 = NOT BELOW 2250 FT ON CLIMB UNLESS SPECIFICALLY CANCELLED BY ATC

COMMUNICATION FAILURE :

- SQUAWK 7600
- IF UNDER PILOT NAVIGATION, MAINTAIN LAST ASSIGNED LEVEL FOR 3 MINUTES, IF NO ONWARD CLEARANCE IS RECEIVED, SUBSEQUENTLY CLIMB TO COMPLY WITH SID.
- IF UNDER RADAR VECTORED : MAINTAIN VECTOR FOR 2 MINUTES, IF BELOW MSA, CLIMB TO MSA, THEN TRACK TO INTERCEPT CLEARED OR PREVIOUSLY ASSIGNED SID TO DESTINATION