

**STANDARD DEPARTURE CHART  
INSTRUMENT (SID) - ICAO**

**KUCHING/KUCHING (WBGG)  
RWY 25 (RNAV)**

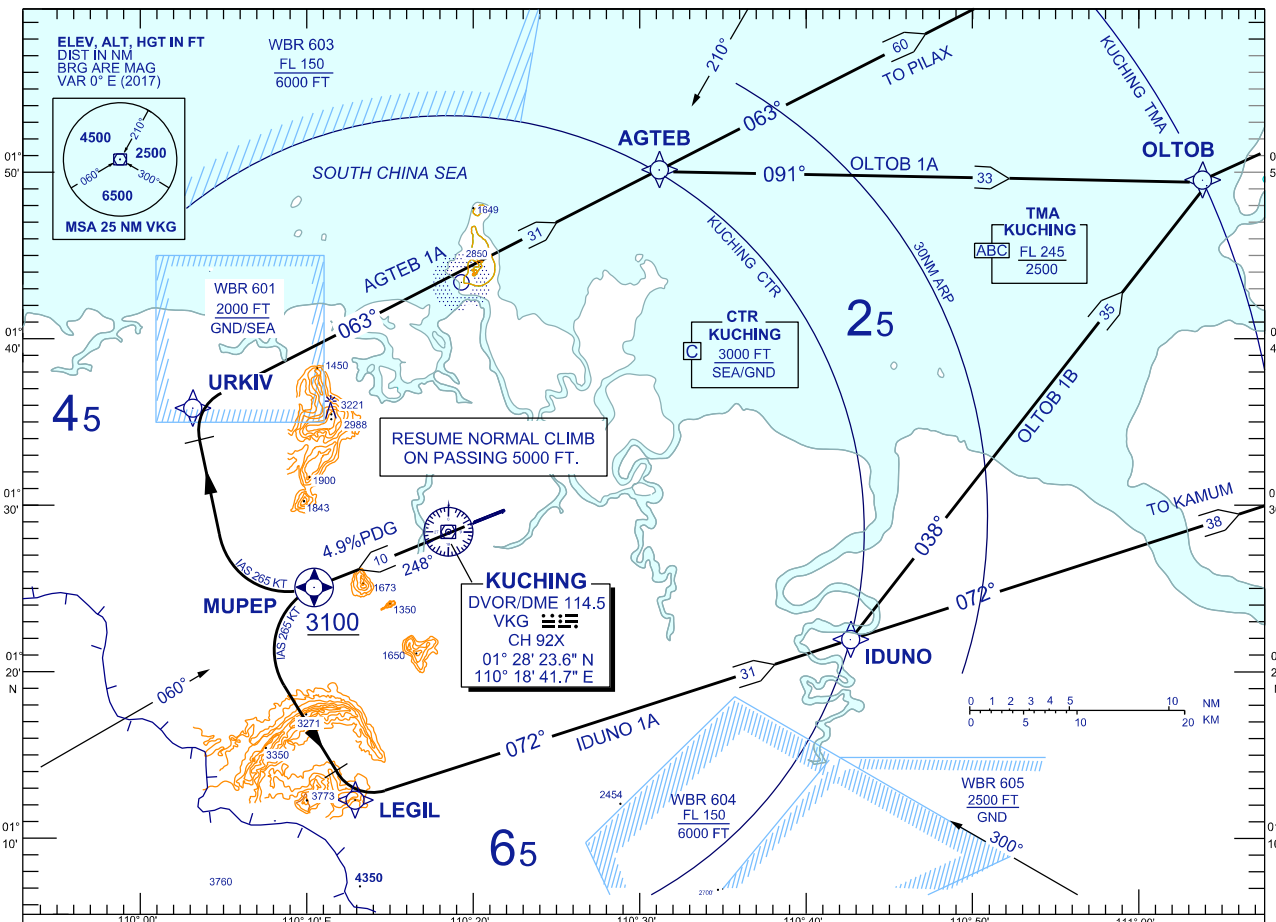
TRANSITION ALTITUDE  
11,000 FT

BANK ANGLE : 15° ACHEIVED

TWR	118.1 (P)	SMC	121.9
	121.7 (S)	ATIS	128.4
APP	120.2 (P)	FIS	134.75
	123.85 (S)		
ACC	134.5 (P)		
	125.35 (S)		

AGTEB 1A  
OLTOB 1A

OLTOB 1B  
IDUNO 1A



**AGTEB ONE ALPHA DEPARTURE**  
**OLTOB ONE ALPHA DEPARTURE**  
**IDUNO ONE ALPHA DEPARTURE**  
**OLTOB ONE BRAVO DEPARTURE**

**RWY 25 (DEPARTURES)**

- CLIMB AT 4.9% PDG ON TRACK TO FLYOVER WPT MUPEP,
- AT/ABOVE 3100 FEET,

**FOR AGTEB ONE ALPHA**

TRACK TO URKIV, THEN TRACK TO AGTEB

**FOR OLTOB ONE ALPHA**

TRACK TO URKIV, THEN TRACK TO AGTEB  
 FROM AGTEB TRACK TO OLTOB

**FOR IDUNO ONE ALPHA**

TRACK TO LEGIL, THEN TRACK TO IDUNO

**FOR OLTOB ONE BRAVO**

TRACK TO LEGIL, THEN TRACK TO IDUNO  
 FROM IDUNO TRACK TO OLTOB

SPEED(IAS)	120KT	140KT	160KT	180KT	200KT	230KT	265KT
4.9% ROC (FT/MIN)	599	698	799	899	997	1147	1324

**VERTICAL RESTRICTIONS :**

ADHERE TO VERTICAL RESTRICTIONS EG . 3100 = NOT BELOW 3100 FT ON CLIMB UNLESS SPECIFICALLY CANCELLED BY ATC

**COMMUNICATION FAILURE :**

- SQUAWK 7600
- IF UNDER PILOT NAVIGATION, MAINTAIN LAST ASSIGNED LEVEL FOR 3 MINUTES, IF NO ONWARD CLEARANCE IS RECEIVED, SUBSEQUENTLY CLIMB TO COMPLY WITH SID.
- IF UNDER RADAR VECTORING : MAINTAIN VECTOR FOR 2 MINUTES, IF BELOW MSA, CLIMB TO MSA, THEN TRACK TO INTERCEPT CLEARED OR PREVIOUSLY ASSIGNED SID TO DESTINATION