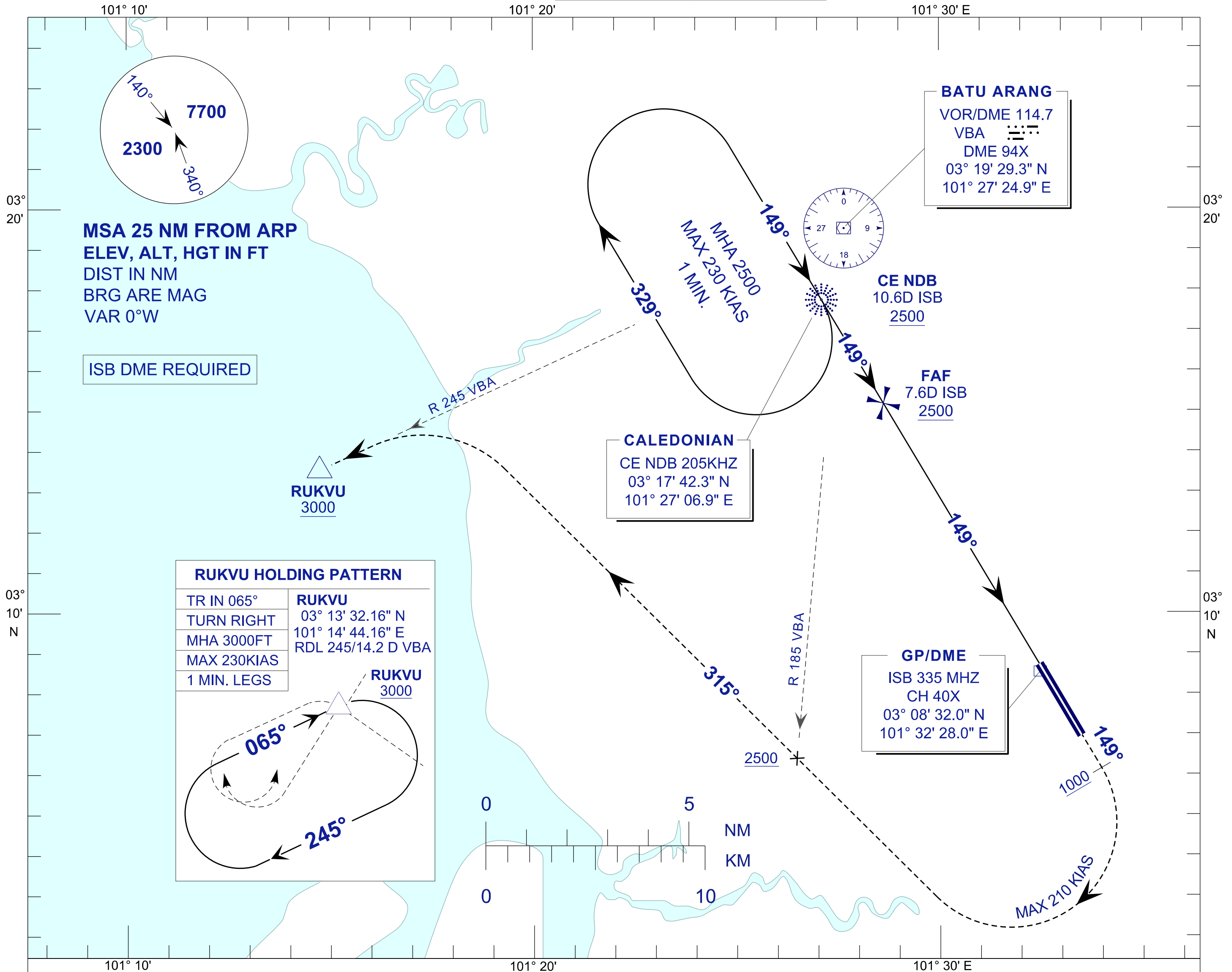


**INSTRUMENT
APPROACH
CHART - ICAO**

AERODROME ELEV 89FT
HEIGHT RELATED TO
THR RWY 15 - ELEV 71FT

APP	118.65	ACD	120.45
	124.20	SMC	121.90
	135.25	TWR	118.20
FIS	126.10	ATIS	127.60

**SUBANG/SULTAN ABDUL
AZIZ SHAH (WMSA)
NDB RWY 15**

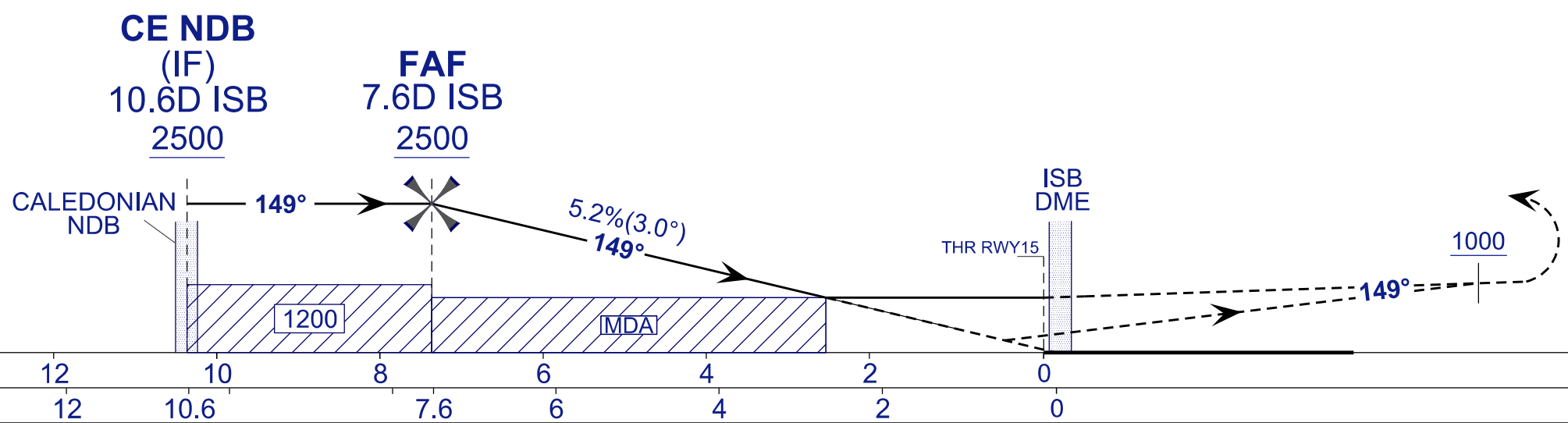


TRANSITION LEVEL FL 130
TRANSITION ALT 11,000 FT

MISSED APPROACH:
CLIMB TO 3000FT OR ABOVE ON TR 149°, ON PASSING 1000FT TURN RIGHT TR 315° TO INTERCEPT RADIAL 245° VBA VOR/DME TO RUKVU AND HOLD, OR AS DIRECTED BY ATC.

CAUTION:
MISSED APPROACH TURN SPEED MAXIMUM 210KIAS, TO CROSS RADIAL 185° VBA VOR/DME AT 2500FT OR ABOVE.

RDH 52 FT



OCA (OCH)	A	B	C	D
STRAIGHT IN APPROACH	950 (879)			

DME ISB (NM)	7.6	6.6	5.6	4.6	3.6	2.6	1.6	0.6
DIST THR RWY15 (NM)	7.5	6.5	5.5	4.5	3.5	2.5	1.5	0.5
ALTITUDE (FT)	2500	2182	1863	1545	1226	908	589	270
GROUND SPEED (KT)	80	100	120	140	160	180		
FAF - RWY15 (7.5NM) (MIN:SEC)	5:36	4:29	3:44	3:12	2:48	2:29		
RATE OF DESCEND (5.2%) (FT/MIN)	420	530	640	740	850	960		

CHANGES : IN PROFILE VIEW CHANGE ALTITUDE VALUE,
566 TO READ AS 589 AND 248 READ AS 270