

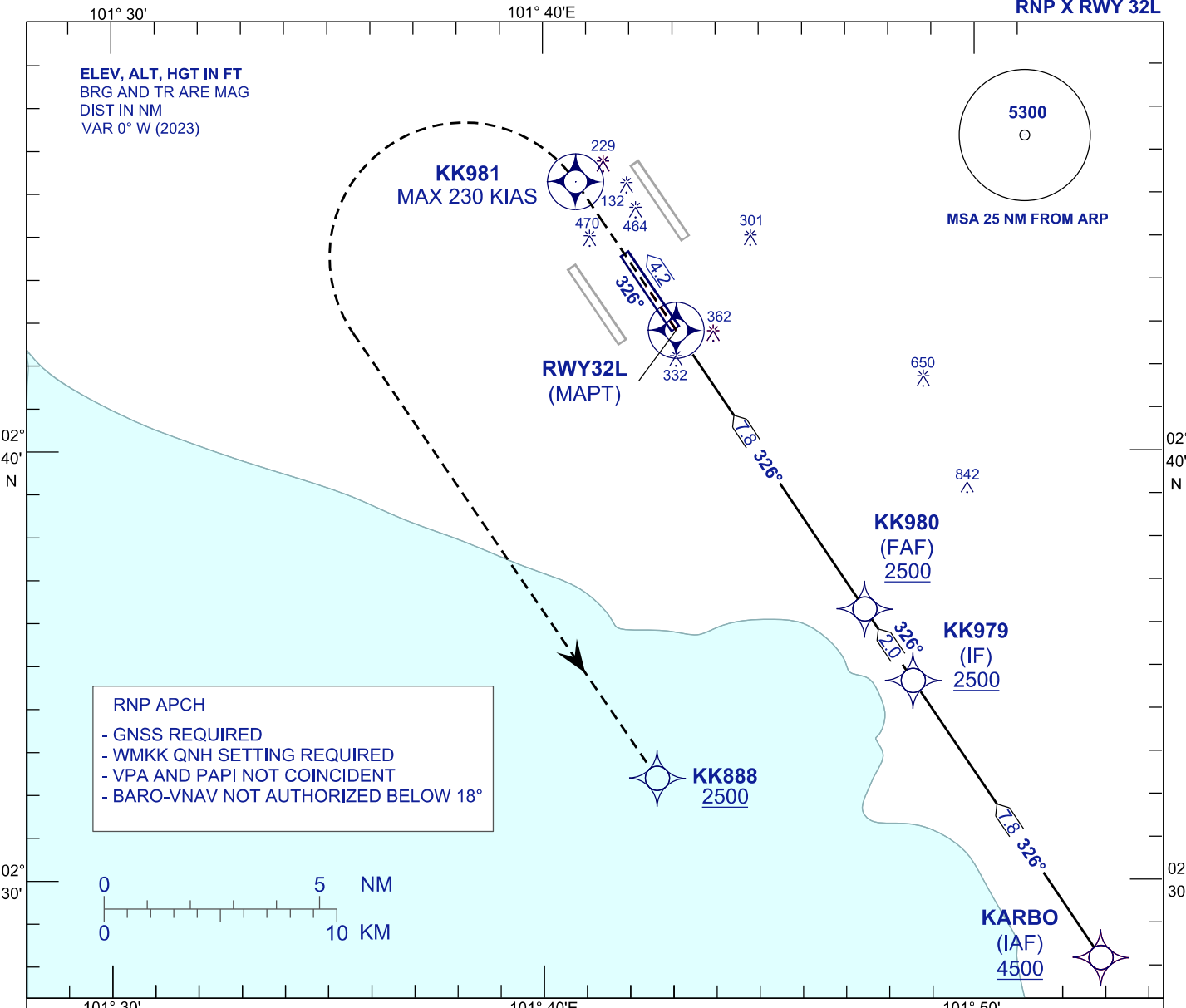
**INSTRUMENT
APPROACH
CHART - ICAO**

AERODROME ELEV 69 FT
HEIGHT RELATED TO
THR RWY 32L - ELEV 48 FT

APP	TWR	SMC	ATIS
119.45	119.80	118.050	128.05
125.85			
125.10			

**SEPANG/KL INTERNATIONAL
AIRPORT (WMKK)**

RNP X RWY 32L

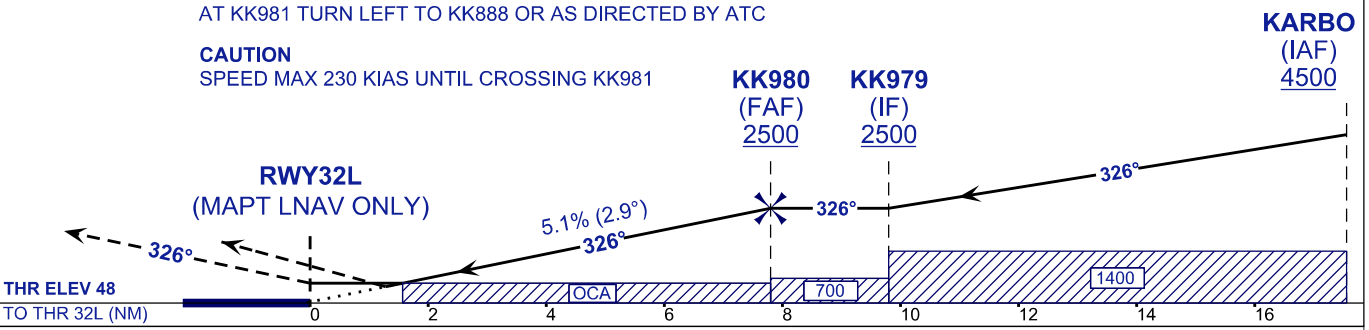


VPA 2.9°
TCH 52FT

MISSED APPROACH
AT MAPT MAINTAIN TR326 TO KK981 CLIMB TO 2500FT OR ABOVE.
AT KK981 TURN LEFT TO KK888 OR AS DIRECTED BY ATC

TRANSITION LEVEL FL130
TRANSITION ALT 11 000

CAUTION
SPEED MAX 230 KIAS UNTIL CROSSING KK981



STRAIGHT-IN APPROACH	OCA (OCH)				GROUND SPEED (GS)	KNOTS	80	100	120	140	160	180		
CATEGORY OF AIRCRAFT	A	B	C	D	FAF - RWY32L (7.8 NM)	MIN:SEC	5:51	4:41	3:54	3:21	2:55	2:36		
LNAV / VNAV	530 (482)				RATE OF DESCENT (5.1% / 2.9°)	FT/MIN	410	510	620	720	820	920		
LNAV	580 (532)				DIST THR / RWY32L	NM	7.8	7.0	6.0	5.0	4.0	3.0	2.0	1.0
					ALTITUDE	FT	2500	2254	1947	1639	1331	1023	715	408