

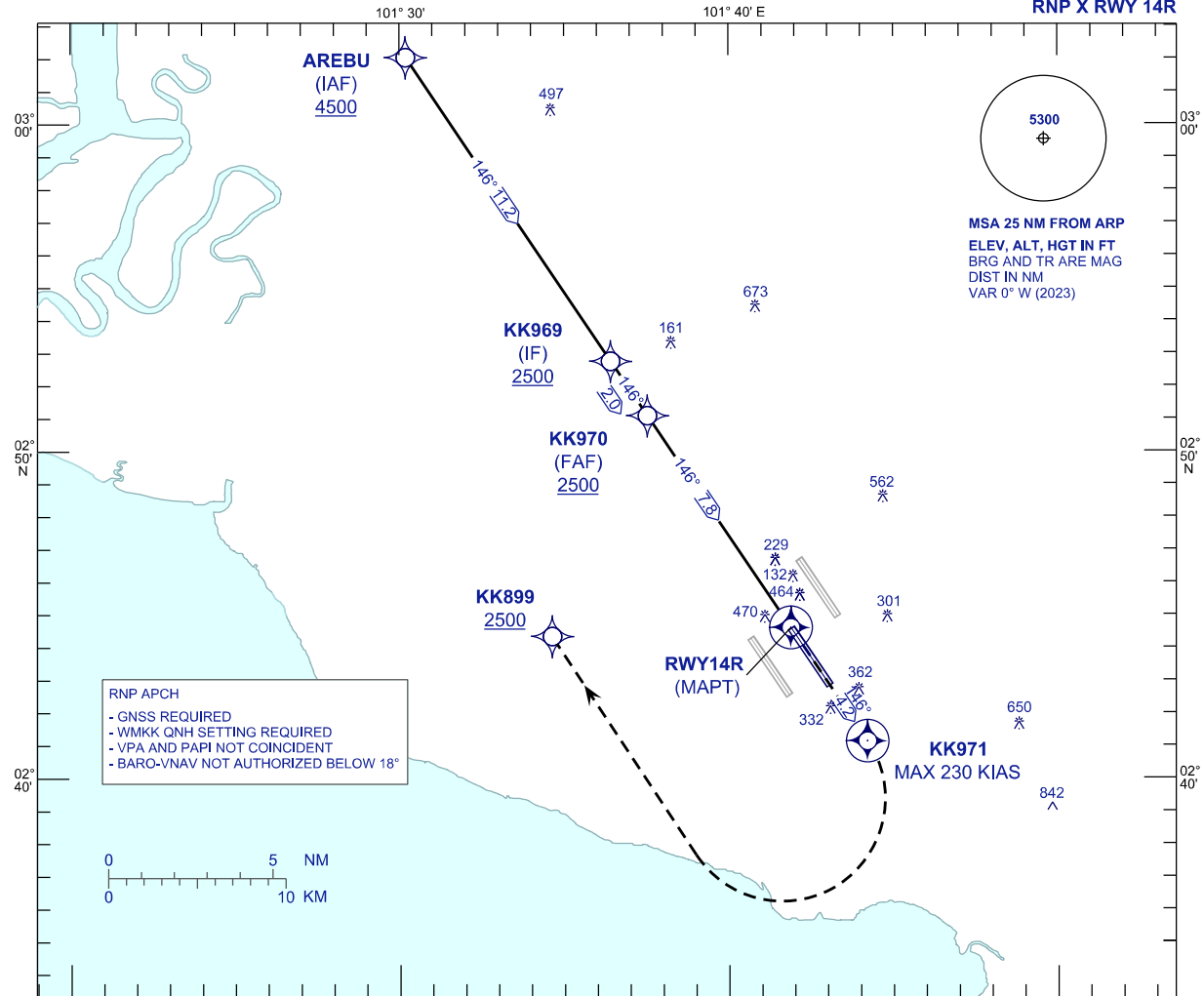
**INSTRUMENT
APPROACH
CHART - ICAO**

AERODROME ELEV 69 FT
HEIGHT RELATED TO
THR RWY 14R - ELEV 54 FT

APP 118.65 135.75 120.35	TWR 118.50	SMC 121.80 122.525	ATIS 128.05
-----------------------------------	---------------	--------------------------	----------------

**SEPANG/KL INTERNATIONAL
AIRPORT (WMKK)**

RNP X RWY 14R



VPA 2.9°
TCH 52 FT

TRANSITION LEVEL FL130
TRANSITION ALT 11 000

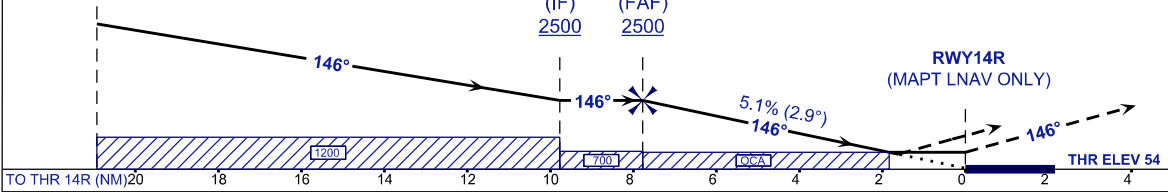
AREBU
(IAF)
4500

KK969 (IF) 2500
KK970 (FAF) 2500

MISSED APPROACH
AT MAPT MAINTAIN TR146 TO KK971 CLIMB TO 2500FT OR ABOVE. AT KK971, TURN RIGHT TO KK899 OR AS DIRECTED BY ATC.

CAUTION
SPEED MAX 230 KIAS UNTIL CROSSING KK971

RWY14R
(MAPT LNAV ONLY)



STRAIGHT-IN APPROACH	OCA (OCH)			
CATEGORY OF AIRCRAFT	A	B	C	D
LNAV / VNAV	604 (550)			
LNAV	670 (616)			

GROUND SPEED (GS)	KNOTS	80	100	120	140	160	180		
FAF - RWY14R (7.8 NM)	MIN:SEC	5:50	4:40	3:53	3:20	2:55	2:36		
RATE OF DESCENT (5.1% / 2.9°)	FT/MIN	410	510	620	720	820	920		
DIST THR / RWY14R	NM	7.8	7.0	6.0	5.0	4.0	3.0	2.0	1.0
ALTITUDE	FT	2500	2261	1953	1646	1337	1030	722	414