

**INSTRUMENT
APPROACH
CHART - ICAO**

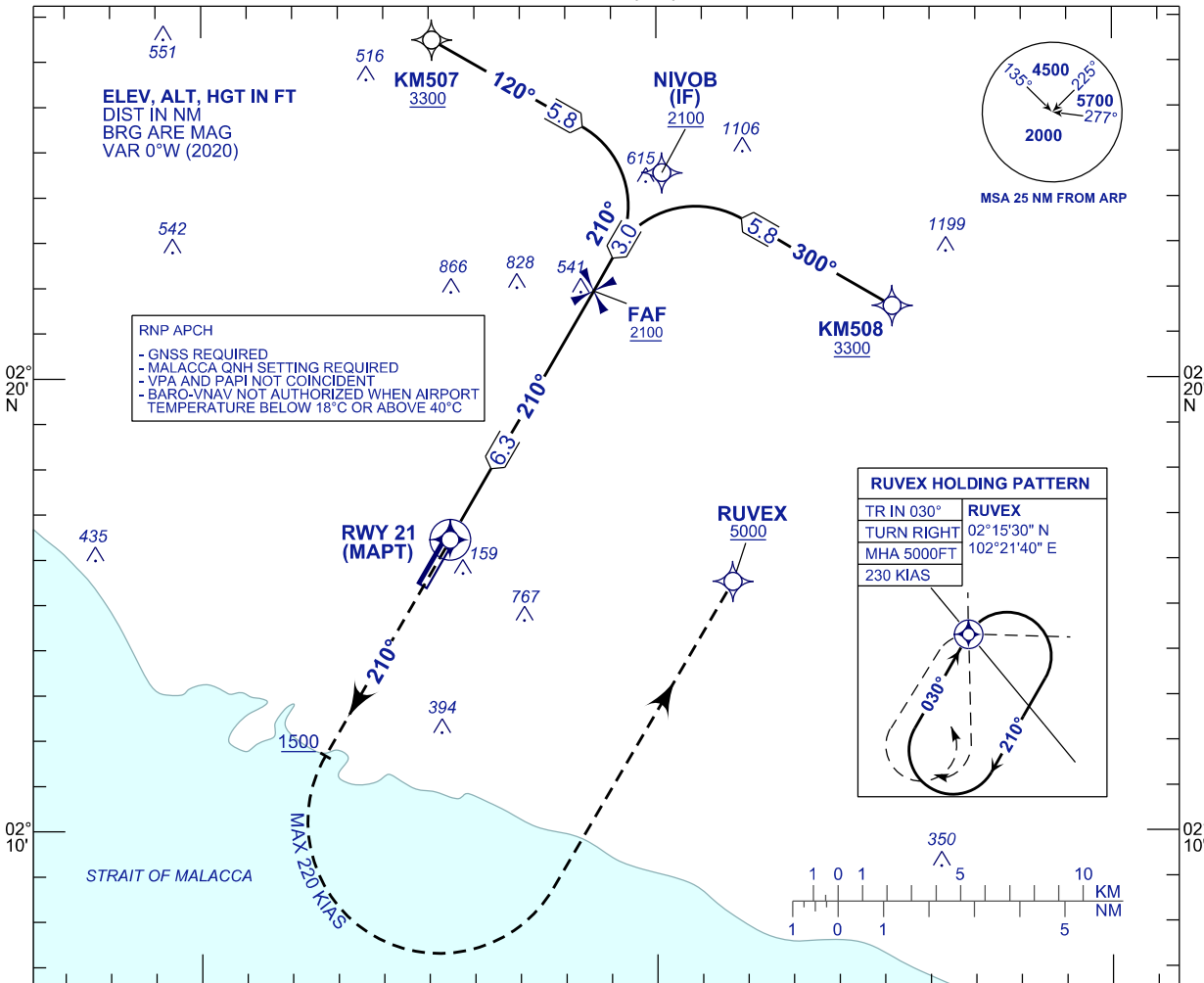
AERODROME ELEV 39 FT
HEIGHTS RELATED TO
THR RWY 21 - ELEV 39 FT

TWR 118.00
SMC 121.60
ATIS 127.45

MALACCA/MALACCA (WMKM)

RNP Y RWY 21

102°20' E



RNP APCH

- GNSS REQUIRED
- MALACCA QNH SETTING REQUIRED
- VPA AND PAPI NOT COINCIDENT
- BARO-VNAV NOT AUTHORIZED WHEN AIRPORT TEMPERATURE BELOW 18°C OR ABOVE 40°C

RUVEX HOLDING PATTERN

TR IN 030°	RUVEX
TURN RIGHT	02°15'30" N
MHA 5000FT	102°21'40" E
230 KIAS	

TCH 50 FT

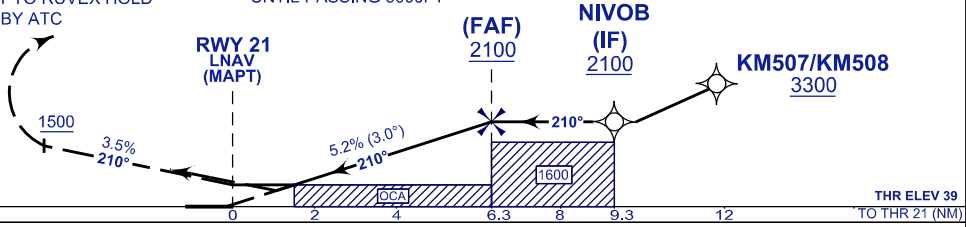
MISSED APPROACH

CLIMB ON TR 210° TO 5000FT. ON PASSING 1500FT TURN LEFT TO RUVEX HOLD OR AS DIRECTED BY ATC

CAUTION:

- MISSED APPROACH TURNED SPEED MAX 220 KIAS
- CLIMB GRADIENT 3.5% UNTIL PASSING 5000FT

TRANSITION ALT 11 000



OCA (OCH)	A	B	C
LNAV	570 (531)		
LNAV / VNAV	303 (264)	316 (277)	324 (285)

DIST THR/RWY 21	NM	6.3	5.3	4.3	3.3	2.3	1.3
ALTITUDE	FT	2100	1782	1463	1145	826	508

GS	KT	80	100	120	140	160	180
FAF - RWY21 (6.3NM)	MIN:SEC	4:45	3:48	3:10	2:43	2:23	2:07
RATE OF DESCEND (318 FT/NM)	FT/MIN	420	530	630	740	840	950

CHANGES: AERODROME ELEVATION.