

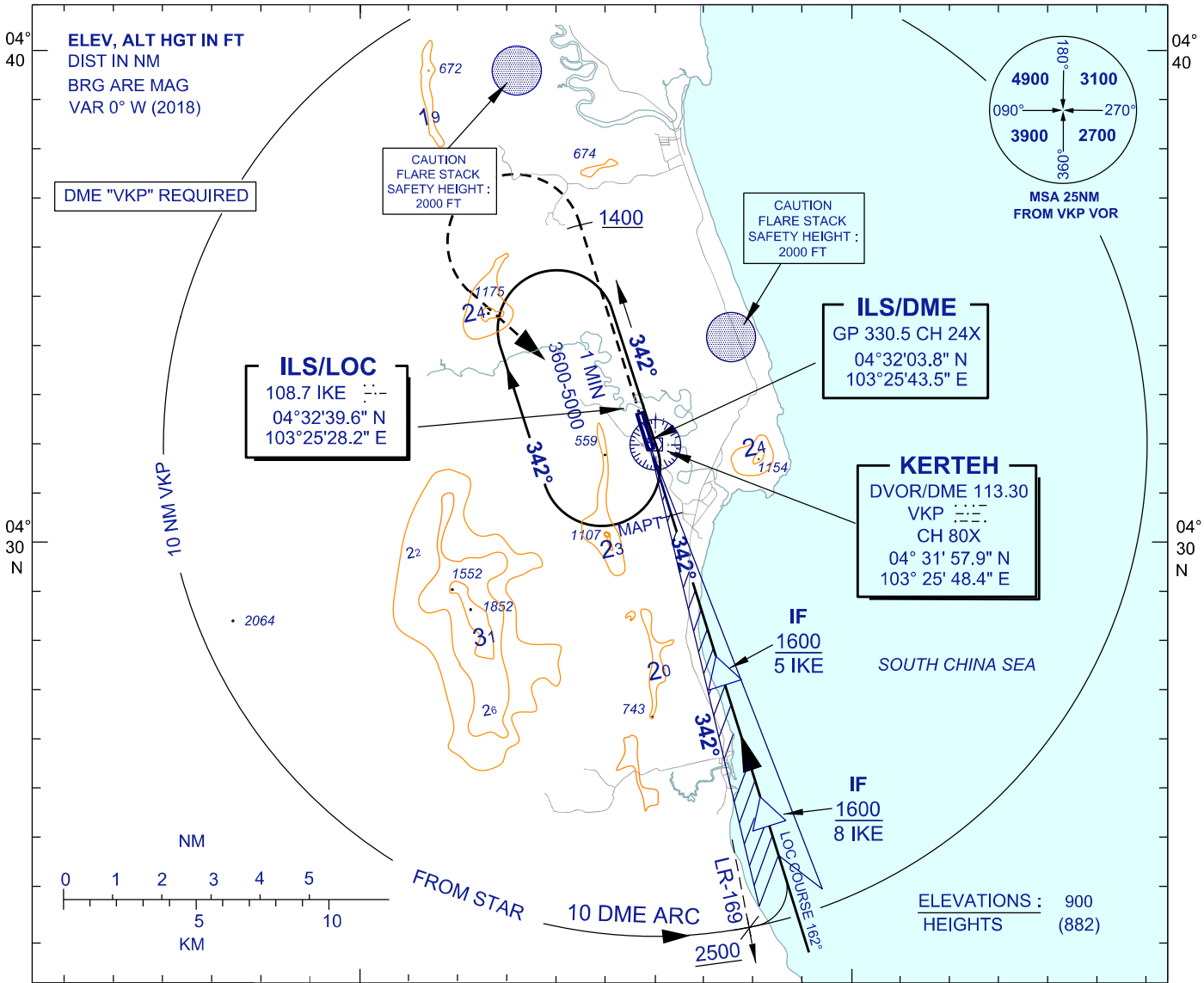
# INSTRUMENT APPROACH CHART - ICAO

AERODROME ELEV 18 FT  
HEIGHTS RELATED TO  
THR RWY 34 - ELEV 18 FT

TWR 123.3  
258.5  
SMC 121.8  
ATIS 128.25

KERTEH/KERTEH (WMKE)  
RWY 34

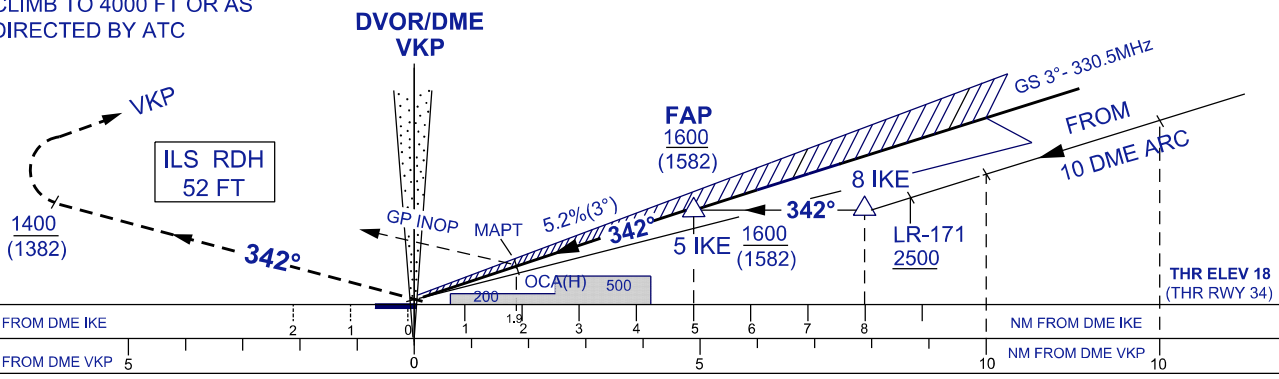
ILS Z OR LOC Z



TRANSITION ALT 11000 103° 20 E 103° 30

DIST BY DME (IKE)	5	4	3	1.9
ALT 3° APCH PATH (FT)	1600 (1582)	1282 (1264)	964 (946)	620 (602)

**MISSED APPROACH**  
CLIMB ON TRACK 342° TO 1400 FT  
TURN LEFT TRACK TO VKP HOLD  
CLIMB TO 4000 FT OR AS  
DIRECTED BY ATC



OCA (H) FT		A	B
STRAIGHT-IN APPROACH	CAT 1	300(282)	310(292)
	LOC	620(602)/1.9 DME	
CIRCLING/MNM VIS (NM)		CIRCLING NOT PERMITTED	

GROUND SPEED(KT)	70	90	110	140	
FAP - MAPT = 3.1 NM	MIN : SEC	2:35	2:04	1:50	1:20
RATE OF DESCENT (3°)	FT/ MIN	379	474	535	738