

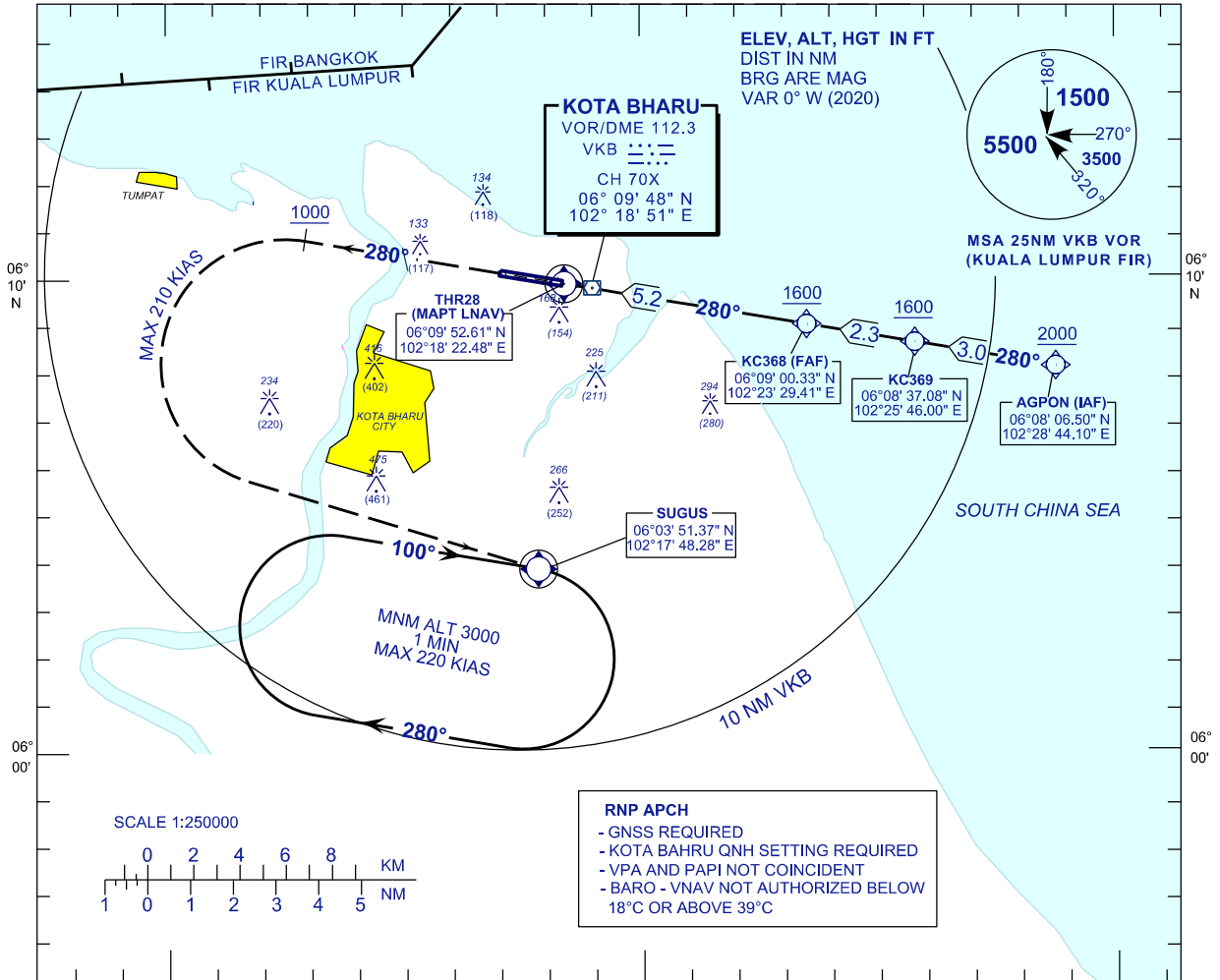
**INSTRUMENT
APPROACH
CHART - ICAO**

AERODROME ELEV 16FT
HEIGHT RELATED TO
THR RWY28 - ELEV 13 FT

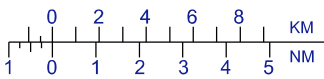
APP	120.85, 130.3
TWR	122.5
SMC	121.6
ATIS	128.85

**KOTA BHARU/
SULTAN ISMAIL PETRA (WMKC)**

RNP Y RWY 28



SCALE 1:250000



RNP APCH
- GNSS REQUIRED
- KOTA BHARU QNH SETTING REQUIRED
- VPA AND PAPI NOT COINCIDENT
- BARO - VNAV NOT AUTHORIZED BELOW 18°C OR ABOVE 39°C

102°10'

102°20'E

TRANSITION ALT 11000

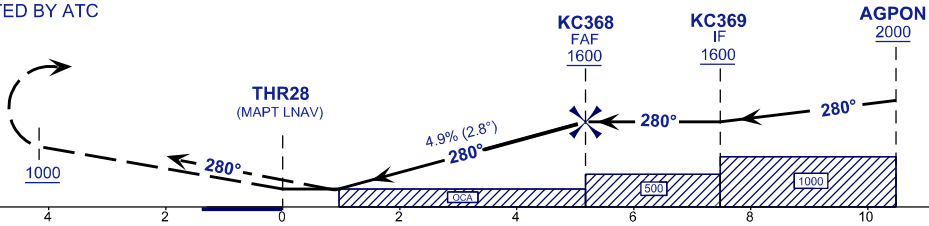
TCH 50 FT
VPA 2.8°

MISSED APPROACH:

TRACK 280° AT 1000 FT OR ABOVE TURN LEFT
DIRECT TO SUGUS HOLD CLIMBING 3000 FT
OR AS DIRECTED BY ATC

THR ELEV 13

TO THR 28 (NM)



OCA (OCH)	A	B	C	D
LNAV	400 (384)			
LNAV/VNAV	350 (337)	360 (347)	370 (357)	380 (367)

DIST RWY28	NM	5.2	4.2	3.2	2.2	1.3
ALTITUDE	FT	1600	1280	980	680	400
GS	KT	100	120	140	160	180
FAF - RW28 (5.2 NM)	MIN:SEC	3:06	2:36	2:13	1:57	1:44
RATE OF DESCEND (297 FT / NM)	FT/MIN	490	590	690	790	890