

**INSTRUMENT
APPROACH
CHART - ICAO**

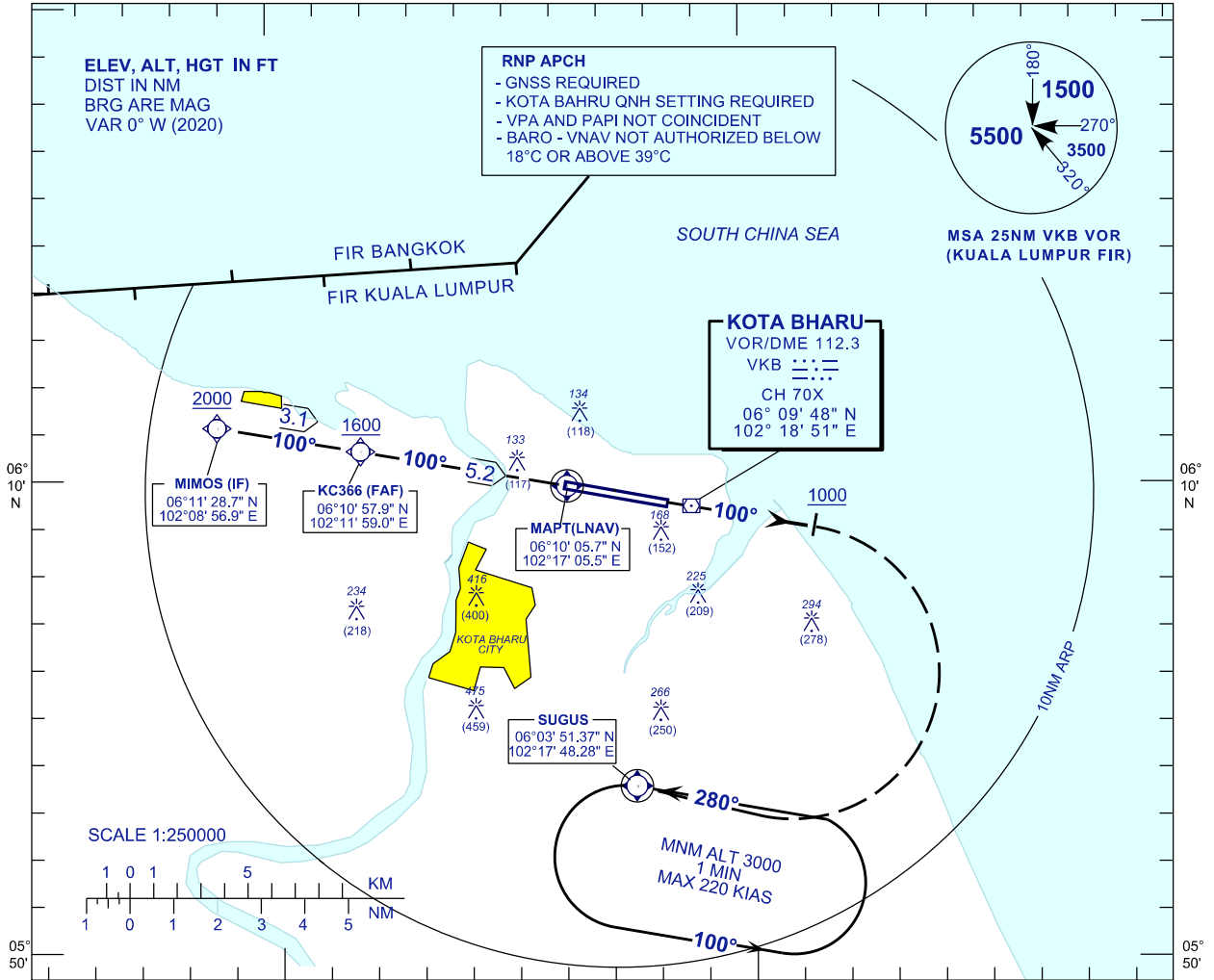
AERODROME ELEV 16FT
HEIGHT RELATED TO
THR RWY10 - ELEV 16 FT

APP 120.85,130.3
TWR 122.5
SMC 121.6
ATIS 128.85

**KOTA BHARU/
SULTAN ISMAIL PETRA (WMKC)**

RNP Y RWY 10

102°10'

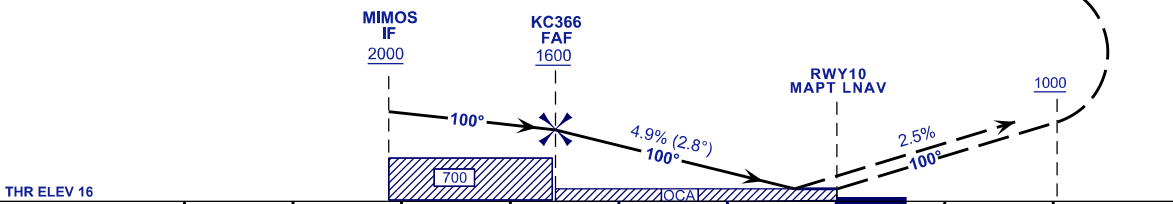


TRANSITION ALT 11000

TCH 50 FT
VPA 2.8°

MISSED APPROACH

TRACK 100° AT OR ABOVE 1000 FT
TURN RIGHT DIRECT TO SUGUS HOLD
CLIMBING 3000 FT OR AS DIRECTED BY ATC



OCA (OCH)	A	B	C	D
LNAV	430 (414)			
LNAV/VNAV	320(304)	330(314)	340(324)	350(334)

DIST RWY10	NM	5.2	4.0	3.0	2.0	1.2
ALTITUDE	FT	1600	1260	960	660	430
GS	KT	100	120	140	160	180
FAF - RW10 (5.2 NM)	MIN:SEC	3:06	2:35	2:13	1:57	1:44
RATE OF DESCEND (297 FT / NM)	FT/MIN	490	590	690	790	890

CHANGES : MAGNETIC VARIATION