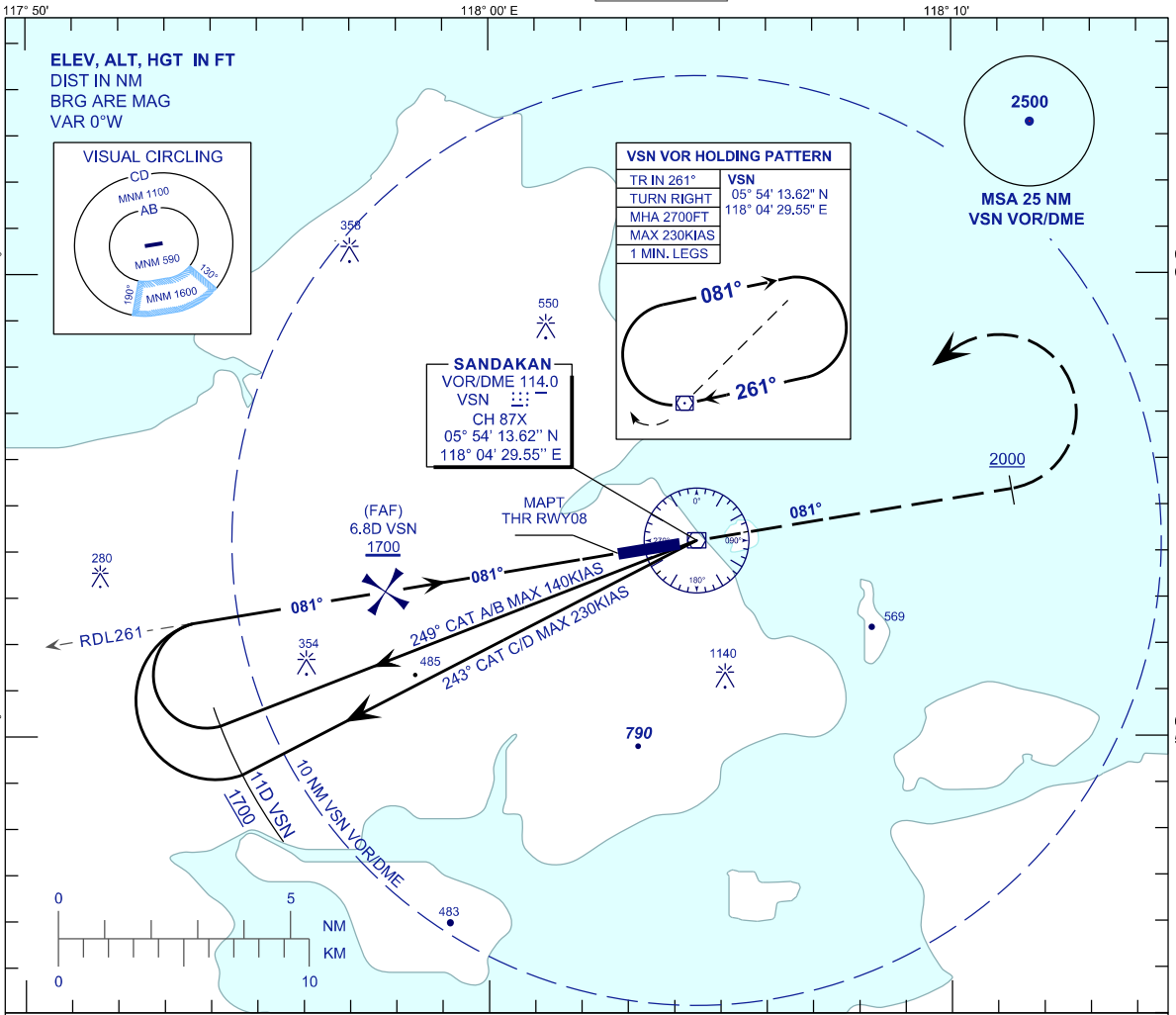


**INSTRUMENT
APPROACH
CHART - ICAO**

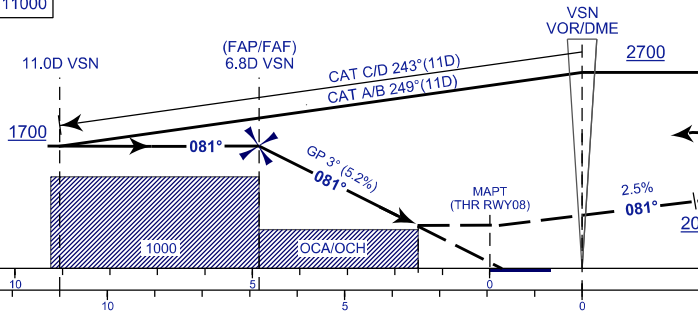
**AERODROME ELEV 43FT
HEIGHT RELATED TO
THR RWY 08 - ELEV 32FT**

APP 123.20
TWR 122.05
SMC 121.90
ATIS 128.20

**SANDAKAN/SANDAKAN (WBKS)
VOR/DME Y RWY 08**



TRANSITION ALT 11000



MISSED APPROACH:
CLIMB TO 2700FT ON TR 081°,
ON PASSING 2000FT TURN LEFT
DIRECT TO VSN VOR AND HOLD,
OR AS DIRECTED BY ATC.

THR ELEV 32
NM FROM THR
NM FROM VSN

OCA(H)	A	B	C	D
STRAIGHT-IN APP	580 (548)			
CIRCLING	590		1600* / 1100	
NOTE*: CIRCLING MNM IN THE SHADED AREA 1600FT				

GROUND SPEED (KT)	90	120	140	160	180
FAF - RWY08 (5.1NM) MIN : SEC	3:23	2:32	2:11	1:54	1:42
RATE OF DESCEND 5.2% (FT/MIN)	480	640	740	850	960
DME VSN (NM)	6.8	6.0	5.0	4.0	3.2
DIST THR RWY08 (NM)	5.1	4.1	3.1	2.1	1.1
ALTITUDE(FT)	1700	1382	1063	743	426

CHANGES : BASE TURN SPEED IAS 230KT TO MAX 230KIAS AND 140KT TO MAX 140KIAS,
REMOVE TCH 50FT AT PROFILE VIEW,
VOR/DME COORDINATES.