

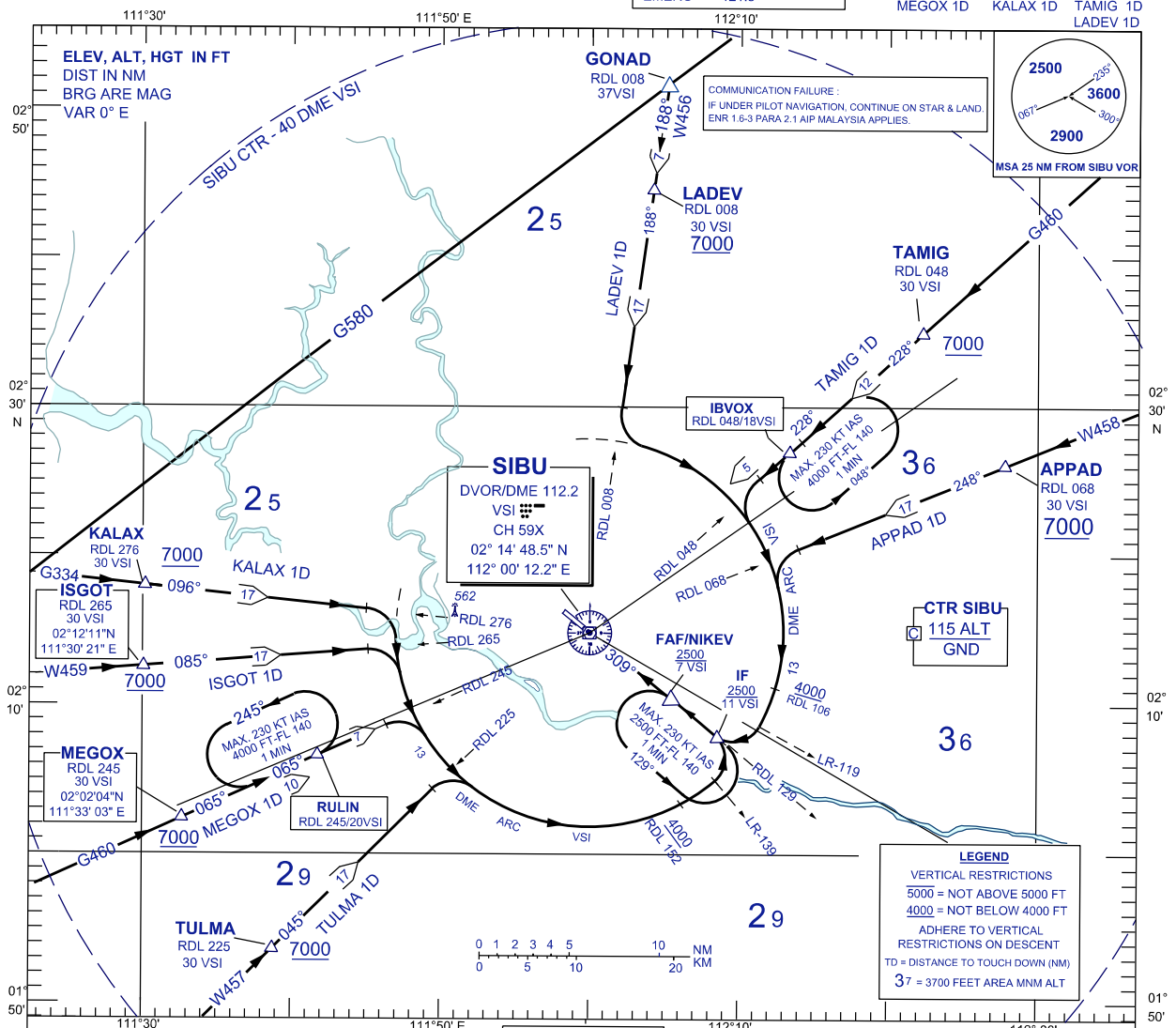
STANDARD ARRIVAL CHART INSTRUMENT (STAR)-ICAO

**SIBU/SIBU (WBGS)
RWY 31
VOR/DME ARC**

TRANSITION ALTITUDE
11 000 FT

APP	122.6(P), 124.4 (S)
TWR	123.2
SMC	121.9
ATIS	127.65
EMERG	121.5

TULMA 1D ISGOT 1D APPAD 1D
MEGOX 1D KALAX 1D TAMIG 1D
LADEV 1D



TULMA ONE DELTA ARRIVAL MEGOX ONE DELTA ARRIVAL ISGOT ONE DELTA ARRIVAL KALAX ONE DELTA ARRIVAL

- TULMA ONE DELTA ARRIVAL**
- FROM TULMA TRACK ON RDL 225 VSI VOR INBOUND
- MEGOX ONE DELTA ARRIVAL / FROM RULIN HOLD**
- FROM MEGOX OR RULIN TRACK ON RDL 245 VSI VOR INBOUND
- ISGOT ONE DELTA ARRIVAL**
- FROM ISGOT TRACK ON RDL 265 VSI VOR INBOUND
- KALAX ONE DELTA ARRIVAL**
- FROM KALAX TRACK ON RDL 276 VSI VOR INBOUND
- FROM TULMA, MEGOX, RULIN, ISGOT OR KALAX ARRIVAL**
- WHEN APPROPRIATELY POSITIONED, TURN RIGHT
 - TO FLY 13 DME ARC VSI
 - ON CROSSING RDL 139, TURN LEFT
 - TO INTERCEPT RDL 129 FOR VOR/DME APPROACH

APPAD ONE DELTA ARRIVAL TAMIG ONE DELTA ARRIVAL LADEV ONE DELTA ARRIVAL

- APPAD ONE DELTA ARRIVAL**
- FROM APPAD TRACK ON RDL 068° VSI VOR INBOUND
- TAMIG ONE DELTA ARRIVAL / FROM IBVOX HOLD**
- FROM TAMIG OR IBVOX TRACK ON RDL 048° VSI VOR INBOUND
- LADEV ONE DELTA ARRIVAL**
- FROM LADEV TRACK ON RDL 008° VSI VOR INBOUND
- FROM APPAD, TAMIG, IBVOX OR LADEV ARRIVAL**
- WHEN APPROPRIATELY POSITIONED, TURN LEFT
 - TO FLY 13 DME ARC VSI
 - ON CROSSING RDL 119, TURN RIGHT
 - TO INTERCEPT RDL 129 FOR VOR/DME APPROACH