

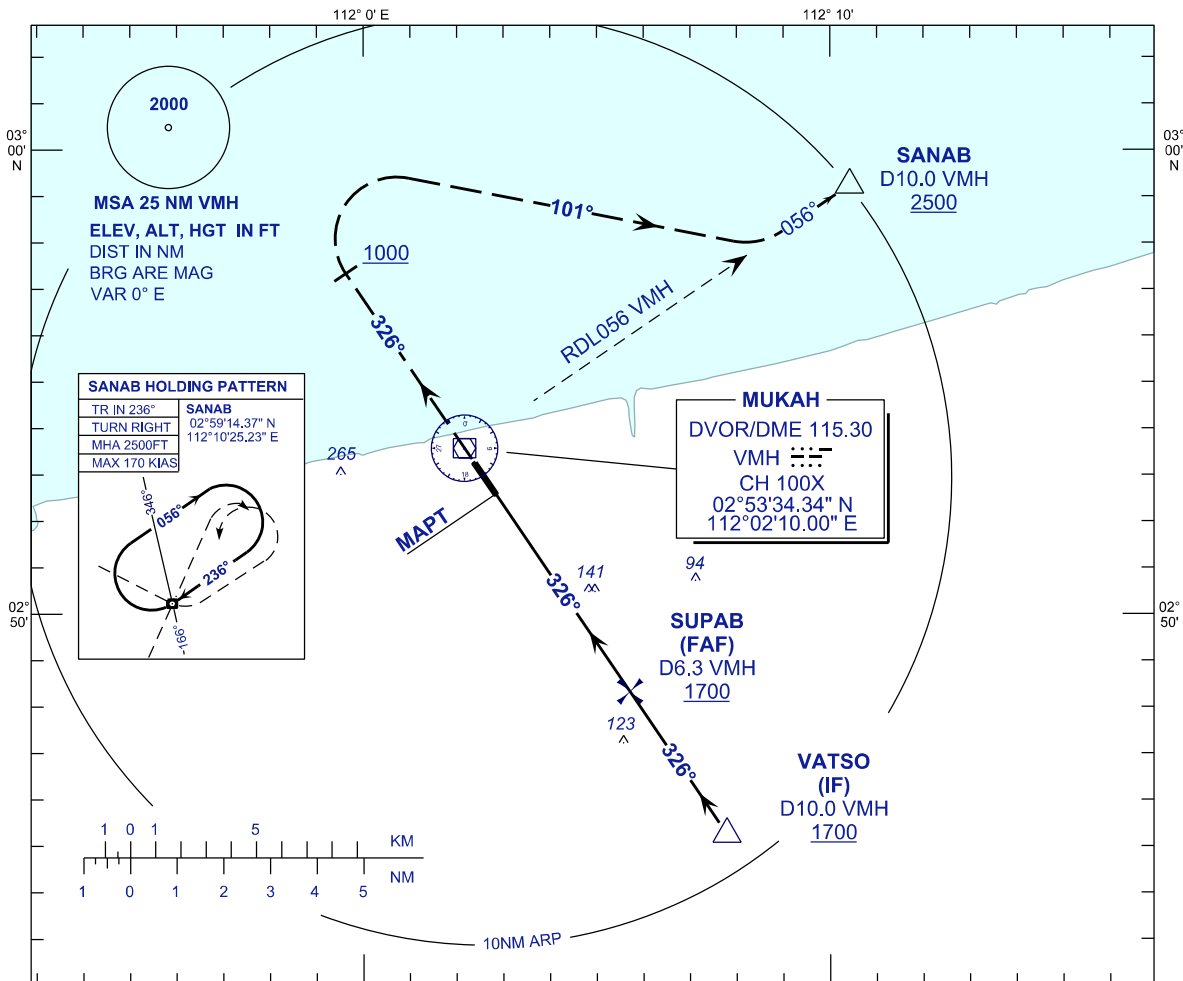
INSTRUMENT APPROACH CHART - ICAO

AERODROME ELEV 20 FT
HEIGHTS RELATED TO
THR RWY 33 - ELEV 20 FT

TWR 118.300
118.425 (S)
SMC 118.075
ATIS 126.200

MUKAH/MUKAH(WBGK)

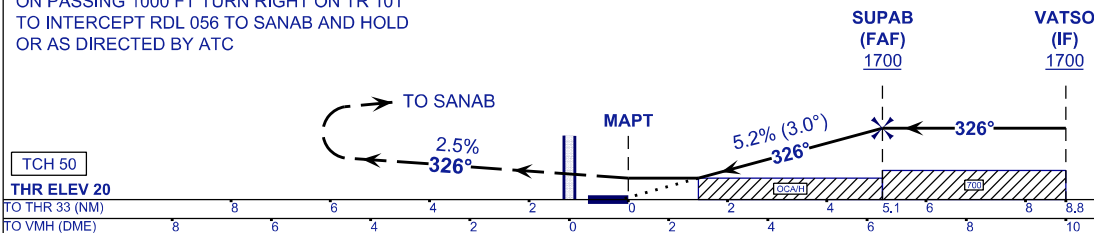
VOR Z RWY 33



MISSED APPROACH

AT MAPT CLIMB TO 2500FT OR ABOVE ON TR 326°
ON PASSING 1000 FT TURN RIGHT ON TR 101°
TO INTERCEPT RDL 056 TO SANAB AND HOLD
OR AS DIRECTED BY ATC

TRANSITION LEVEL FL130
TRANSITION ALT 11 000



OCA / OCH	A	B
VOR/DME	520 (500)	
CIRCLING (MNM/VIS)	550 (530) / 1.0	550 (530) / 1.5

DME VMH	NM	6.3	5.3	4.3	3.3	2.3
DIST THR / RWY33	NM	5.1	4.1	3.1	2.1	1.1
ALTITUDE	FT	1700	1376	1057	739	420

GROUND SPEED	KT	80	100	120	140	160	180
FAF - THR RWY33 (5.1NM)	MIN:SEC	3:50	3:04	2:34	2:12	1:55	1:42
RATE OF DESCEND(318.5FT/NM)	FT/MIN	420	530	640	740	850	960

CHANGES : ADD SANAB HOLDING PATTERN
ADD MSA CENTER POINT