

**STANDARD DEPARTURE CHART  
INSTRUMENT (SID) - ICAO**

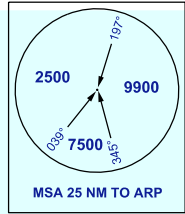
**KOTA KINABALU/KOTA KINABALU  
(WBKK)  
RWY 20  
DEPARTURES (RIGHT TURN)  
(RNAV 1)**

TRANSITION ALTITUDE  
11,000 FT

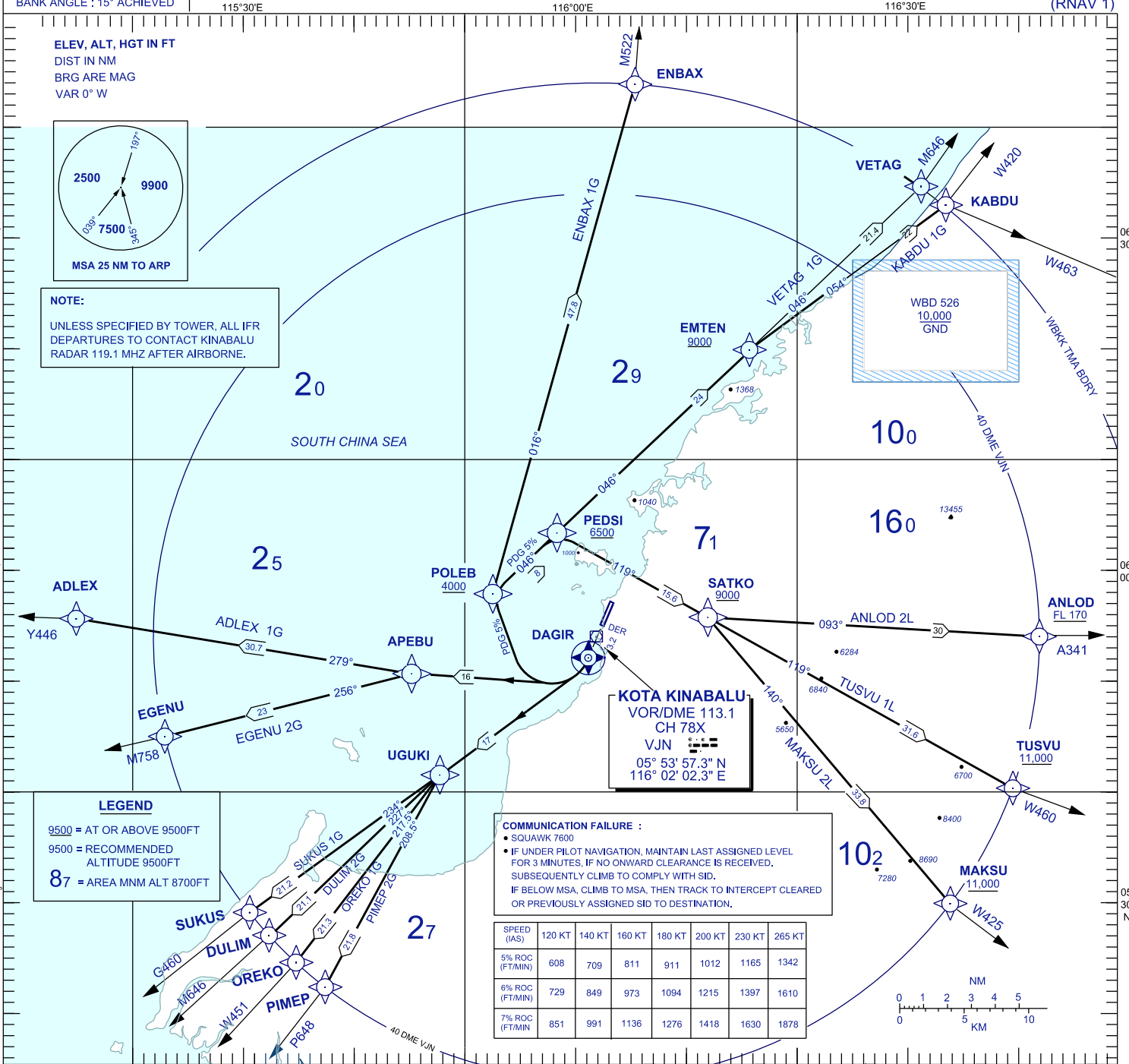
APP 119.1  
TWR 118.3  
GND 121.6  
ATIS 127.4

BANK ANGLE : 15° ACHIEVED

ELEV, ALT, HGT IN FT  
DIST IN NM  
BRG ARE MAG  
VAR 0° W



**NOTE:**  
UNLESS SPECIFIED BY TOWER, ALL IFR DEPARTURES TO CONTACT KINABALU RADAR 119.1 MHZ AFTER AIRBORNE.



WBK TMA BDRY  
WBD 526  
10,000  
GND

**KOTA KINABALU**  
VOR/DME 113.1  
CH 78X  
VJN  
05° 53' 57.3" N  
116° 02' 02.3" E

**LEGEND**  
9500 = AT OR ABOVE 9500FT  
9500 = RECOMMENDED ALTITUDE 9500FT  
87 = AREA MNM ALT 8700FT

**COMMUNICATION FAILURE :**  
• SQUAWK 7600  
• IF UNDER PILOT NAVIGATION, MAINTAIN LAST ASSIGNED LEVEL FOR 3 MINUTES. IF NO ONWARD CLEARANCE IS RECEIVED, SUBSEQUENTLY CLIMB TO COMPLY WITH SID.  
IF BELOW MSA, CLIMB TO MSA, THEN TRACK TO INTERCEPT CLEARED OR PREVIOUSLY ASSIGNED SID TO DESTINATION.

SPEED (IAS)	120 KT	140 KT	160 KT	180 KT	200 KT	230 KT	265 KT
5% ROC (FT/MIN)	608	709	811	911	1012	1165	1342
6% ROC (FT/MIN)	729	849	973	1094	1215	1397	1610
7% ROC (FT/MIN)	851	991	1136	1276	1418	1630	1878

