

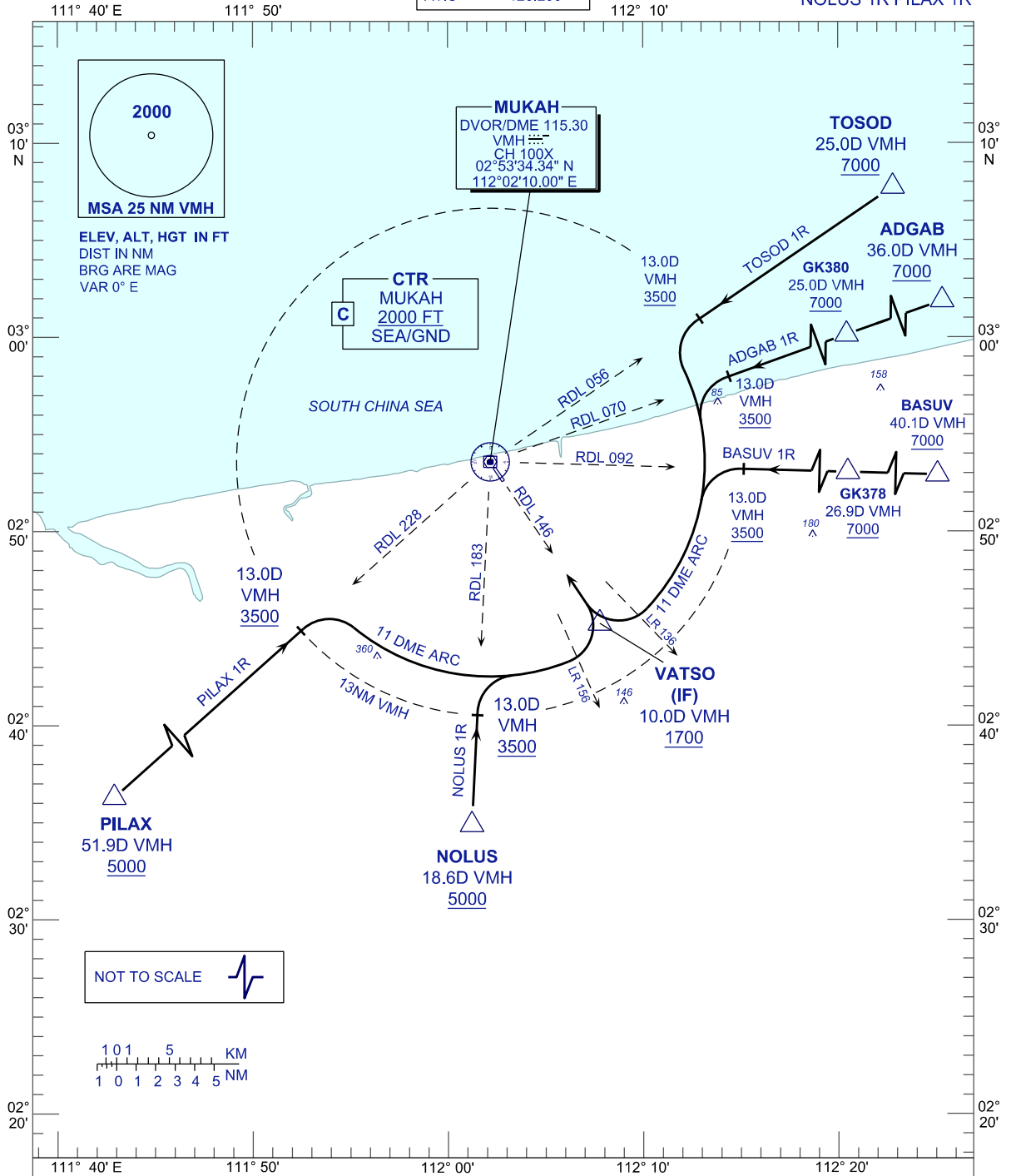
**STANDARD ARRIVAL CHART  
INSTRUMENT (STAR) - ICAO**

**MUKAH/MUKAH(WBGK)  
VOR/DME ARC RWY 33**

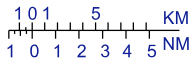
TRANSITION ALT 11 000FT

APP	122.6 (P)
	124.4 (S)
TWR	118.30 (P)
	118.075 (S)
ATIS	126.200

TOSOD 1R ADGAB 1R BASUV 1R  
NOLUS 1R PILAX 1R



NOT TO SCALE



**COMMUNICATION FAILURE:**

- SQUAWK 7600
- IF UNDER PILOT NAVIGATION, MAINTAIN LAST ASSIGNED LEVEL FOR 3 MINUTES, IF NO ONWARDS CLEARANCE IS RECEIVED SUBSEQUENTLY CLIMB/DESCEND TO COMPLY WITH STAR AND LAND
- IF UNDER RADAR VECTORING, MAINTAIN VECTOR FOR 1 MINUTE, IF BELOW MSA CLIMB TO MSA, THEN TRACK TO INTERCEPT CLEARED OR PREVIOUSLY ASSIGNED STAR AND LAND

**CHANGES :** ADD MSA CENTER POINT  
LR 336 TO LR 136  
LR 356 TO LR 156