

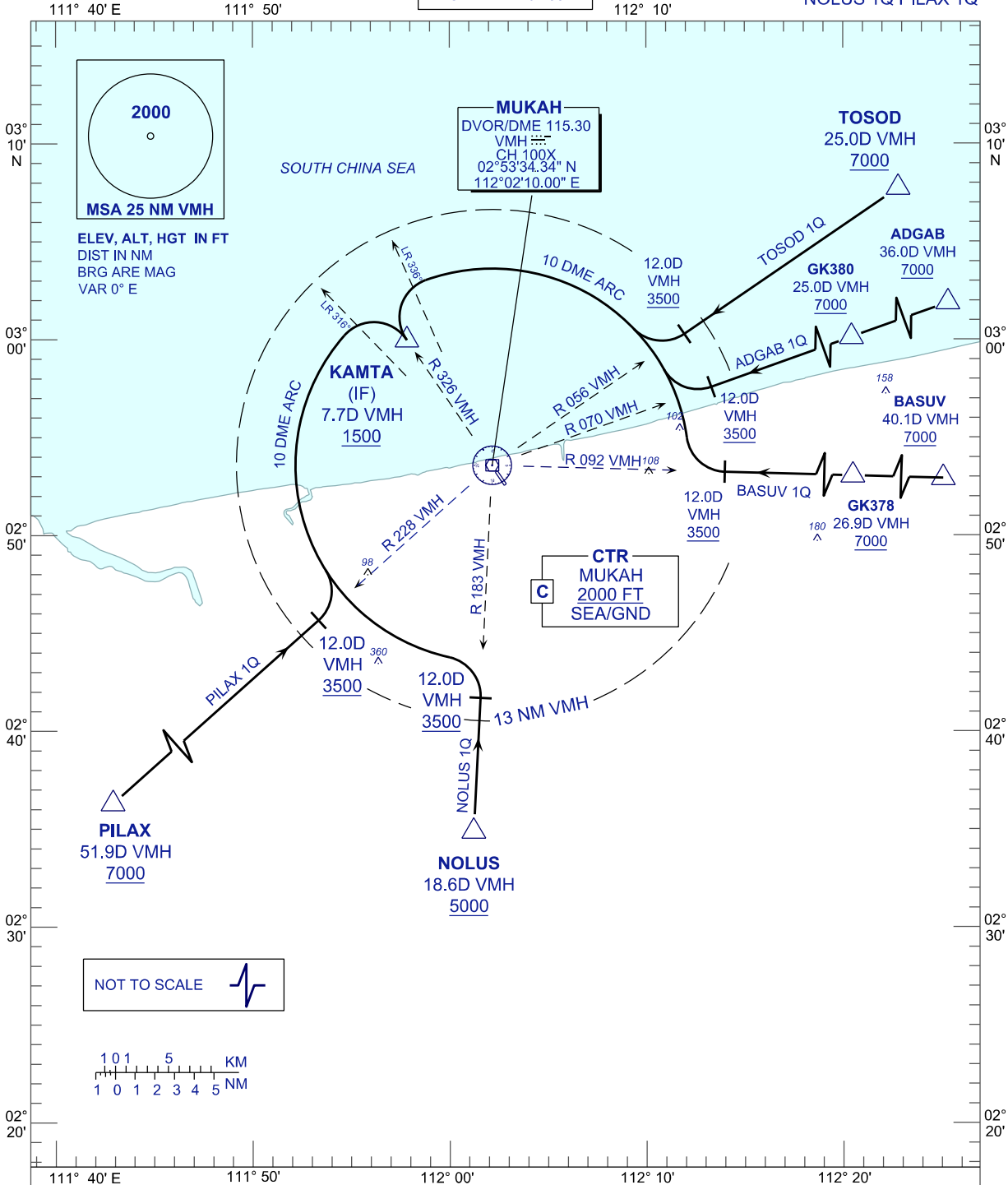
STANDARD ARRIVAL CHART INSTRUMENT (STAR) - ICAO

MUKAH/MUKAH(WBGK) VOR/DME ARC RWY 15

APP	122.6 (P)
	124.4 (S)
TWR	118.30 (P)
	118.075 (S)
ATIS	126.200

TOSOD 1Q ADGAB 1Q BASUV 1Q
NOLUS 1Q PILAX 1Q

TRANSITION ALT 11 000FT



COMMUNICATION FAILURE:

SQUAWK 7600
 -IF UNDER PILOT NAVIGATION, MAINTAIN LAST ASSIGNED LEVEL FOR 3 MINUTES, IF NO ONWARDS CLEARANCE IS RECEIVED SUBSEQUENTLY CLIMB/DESCEND TO COMPLY WITH STAR AND LAND
 -IF UNDER RADAR VECTORED, MAINTAIN VECTOR FOR 1 MINUTE, IF BELOW MSA CLIMB TO MSA, THEN TRACK TO INTERCEPT CLEARED OR PREVIOUSLY ASSIGNED STAR AND LAND

CHANGES : ADD MSA CENTER POINT