

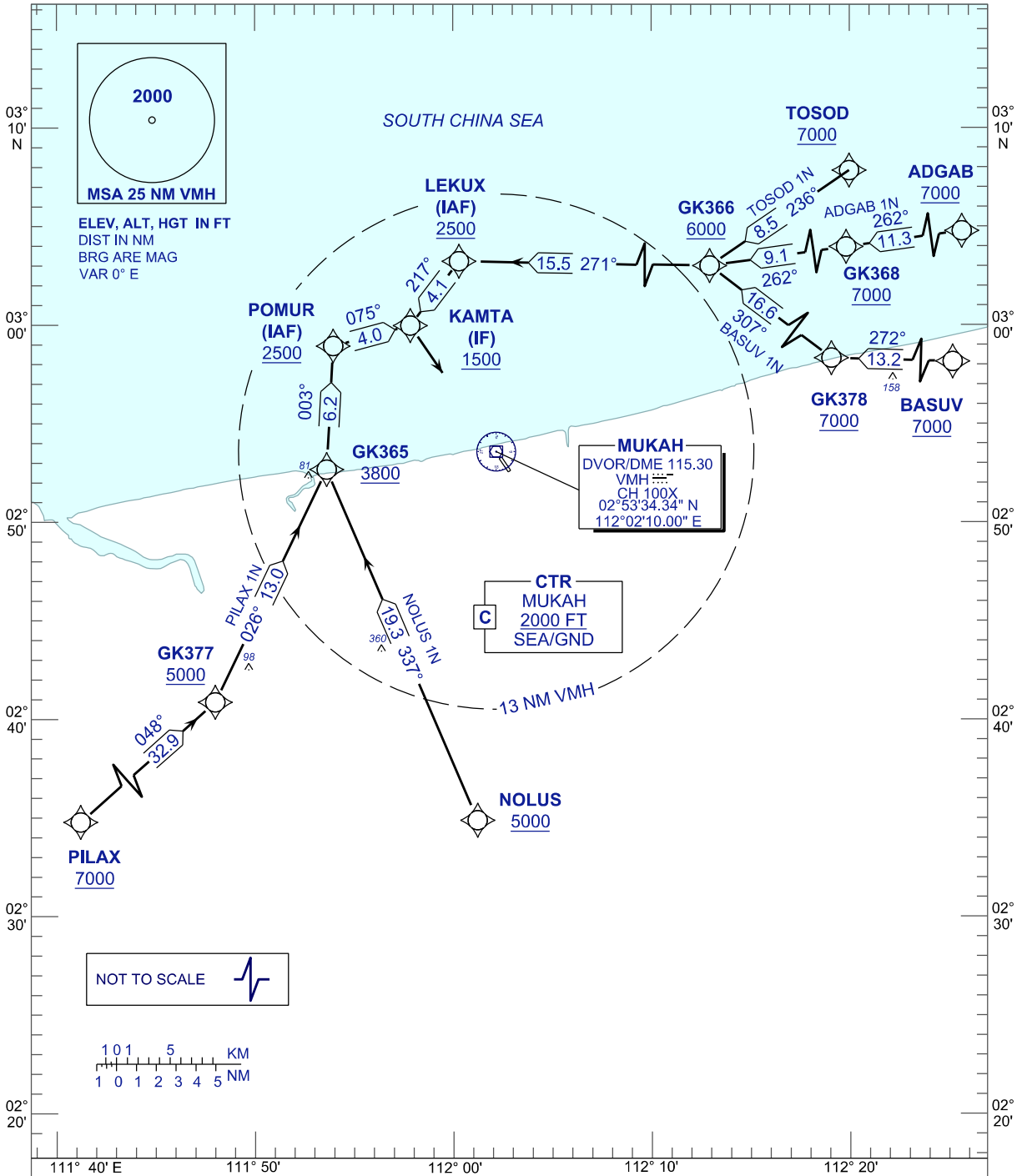
STANDARD ARRIVAL CHART INSTRUMENT (STAR) - ICAO

MUKAH/MUKAH(WBGK) RNAV (GNSS) RWY 15

APP	122.6 (P)
	124.4 (S)
TWR	118.30 (P)
	118.075 (S)
ATIS	126.200

TOSOD 1N ADGAB 1N BASUV 1N
NOLUS 1N PILAX 1N

TRANSITION ALT 11 000FT



COMMUNICATION FAILURE:

- SQUAWK 7600
- IF UNDER PILOT NAVIGATION, MAINTAIN LAST ASSIGNED LEVEL FOR 3 MINUTES, IF NO ONWARDS CLEARANCE IS RECEIVED SUBSEQUENTLY CLIMB/DESCEND TO COMPLY WITH STAR AND LAND
- IF UNDER RADAR VECTORED, MAINTAIN VECTOR FOR 1 MINUTE, IF BELOW MSA CLIMB TO MSA, THEN TRACK TO INTERCEPT CLEARED OR PREVIOUSLY ASSIGNED STAR AND LAND

CHANGES : ADD MSA CENTER POINT