

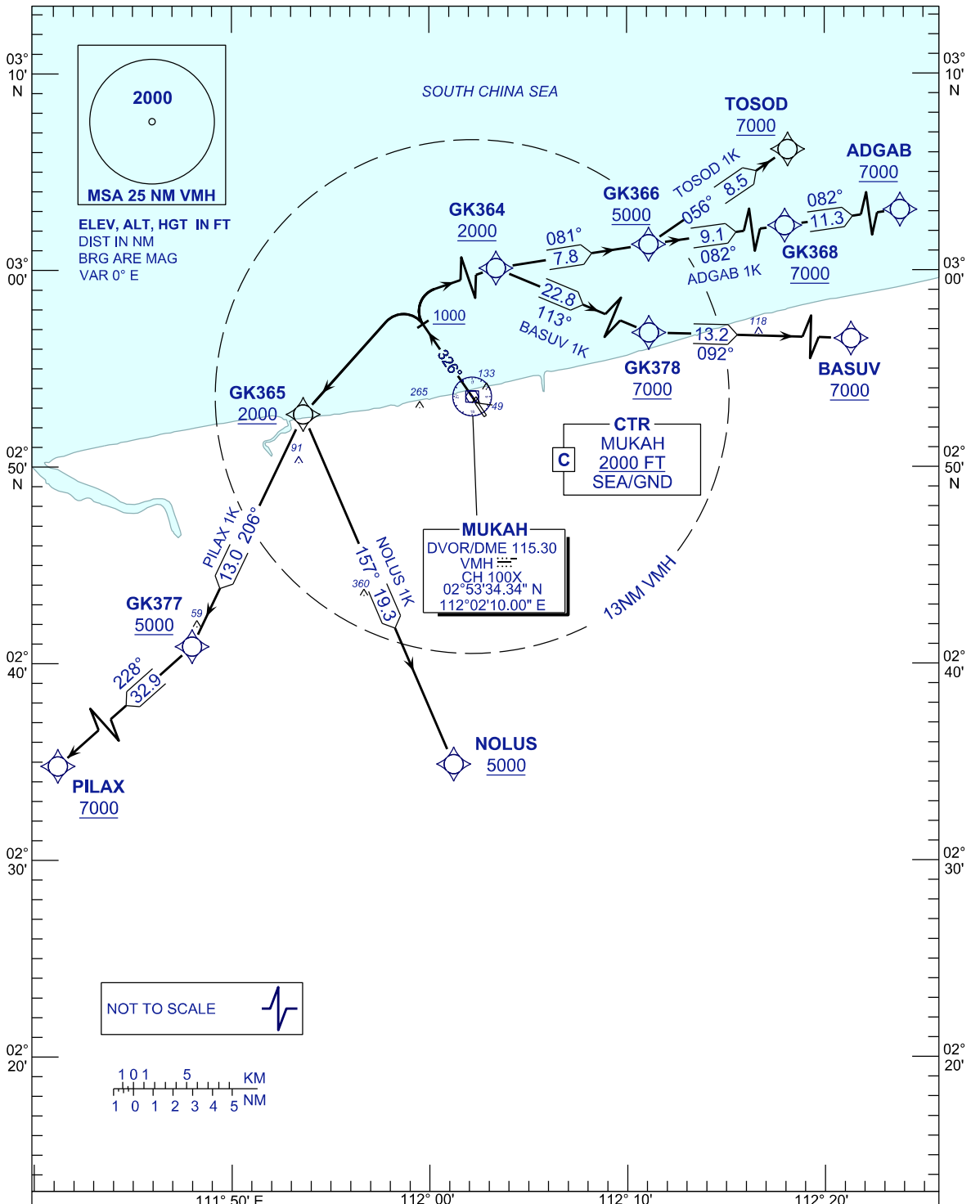
**STANDARD DEPARTURE CHART
INSTRUMENT (SID) - ICAO**

**MUKAH/MUKAH(WBG)
RNAV (GNSS) RWY 33**

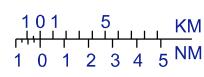
APP	122.6 (P)
	124.4 (S)
TWR	118.30 (P)
	118.075 (S)
ATIS	126.200

TOSOD 1K ADGAB 1K BASUV 1K
NOLUS 1K PILAX 1K

TRANSITION ALT 11 000FT



NOT TO SCALE



COMMUNICATION FAILURE:
SQUAWK 7600
-IF UNDER PILOT NAVIGATION, MAINTAIN LAST ASSIGNED LEVEL FOR 3 MINUTES, IF NO ONWARDS CLEARANCE IS RECEIVED SUBSEQUENTLY CLIMB TO COMPLY WITH SID TO DESTINATION
-IF UNDER RADAR VECTORED, MAINTAIN VECTOR FOR 1 MINUTE, IF BELOW MSA CLIMB TO MSA, THEN TRACK TO INTERCEPT CLEARED OR PREVIOUSLY ASSIGNED SID TO DESTINATION.

CHANGES : ADD MSA CENTER POINT