

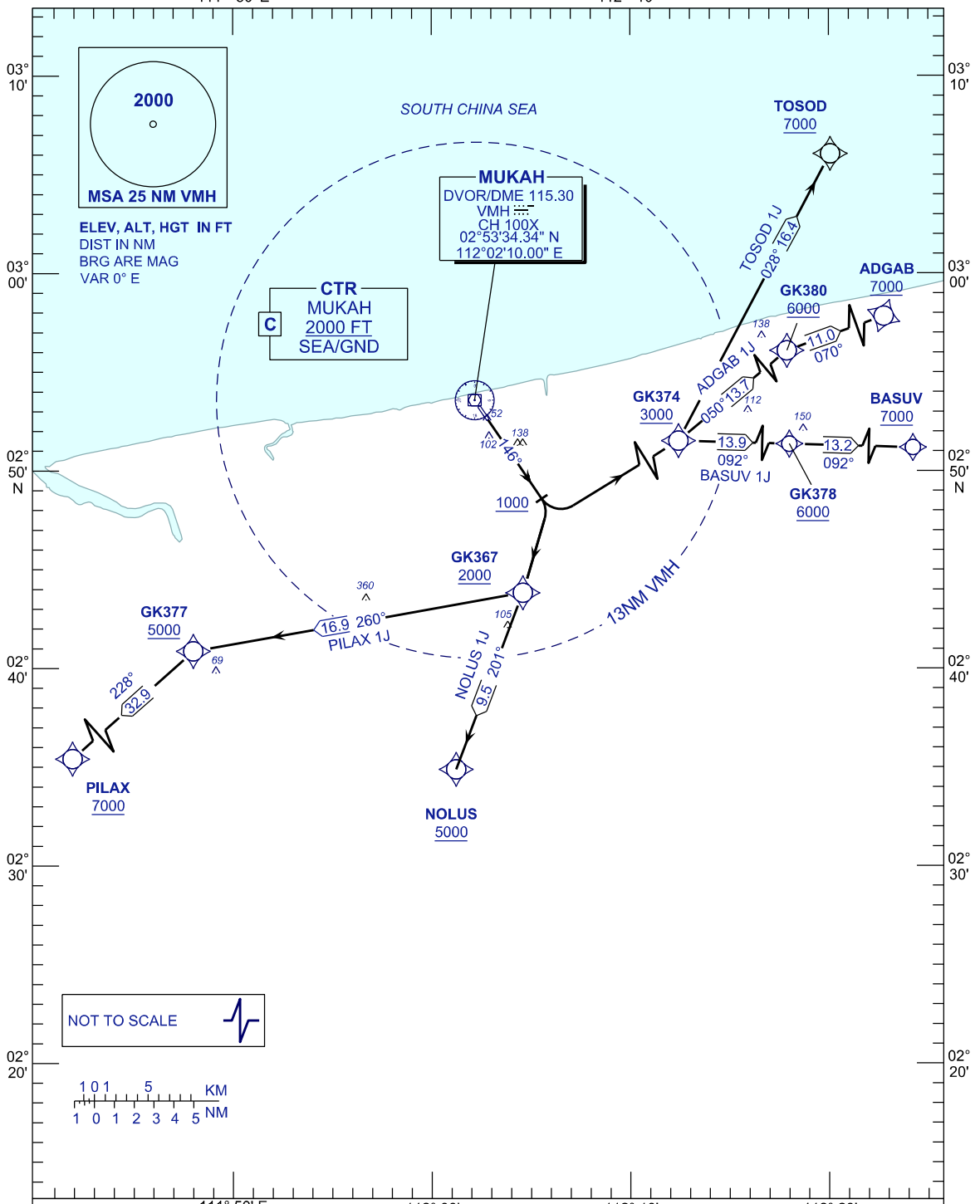
**STANDARD DEPARTURE CHART
INSTRUMENT (SID) - ICAO**

APP	122.6 (P)
	124.4 (S)
TWR	118.30 (P)
	118.075 (S)
ATIS	126.200

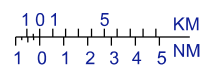
**MUKAH/MUKAH(WBGK)
RNAV (GNSS) RWY 15**

TOSOD 1J ADGAB 1J BASUV 1J
NOLUS 1J PILAX 1J

TRANSITION ALT 11 000FT
111° 50' E



NOT TO SCALE



COMMUNICATION FAILURE:

- SQUAWK 7600
- IF UNDER PILOT NAVIGATION, MAINTAIN LAST ASSIGNED LEVEL FOR 3 MINUTES, IF NO ONWARDS CLEARANCE IS RECEIVED SUBSEQUENTLY CLIMB TO COMPLY WITH SID TO DESTINATION
- IF UNDER RADAR VECTORED, MAINTAIN VECTOR FOR 1 MINUTE, IF BELOW MSA CLIMB TO MSA, THEN TRACK TO INTERCEPT CLEARED OR PREVIOUSLY ASSIGNED SID TO DESTINATION.

CHANGES : ADD MSA CENTER POINT