

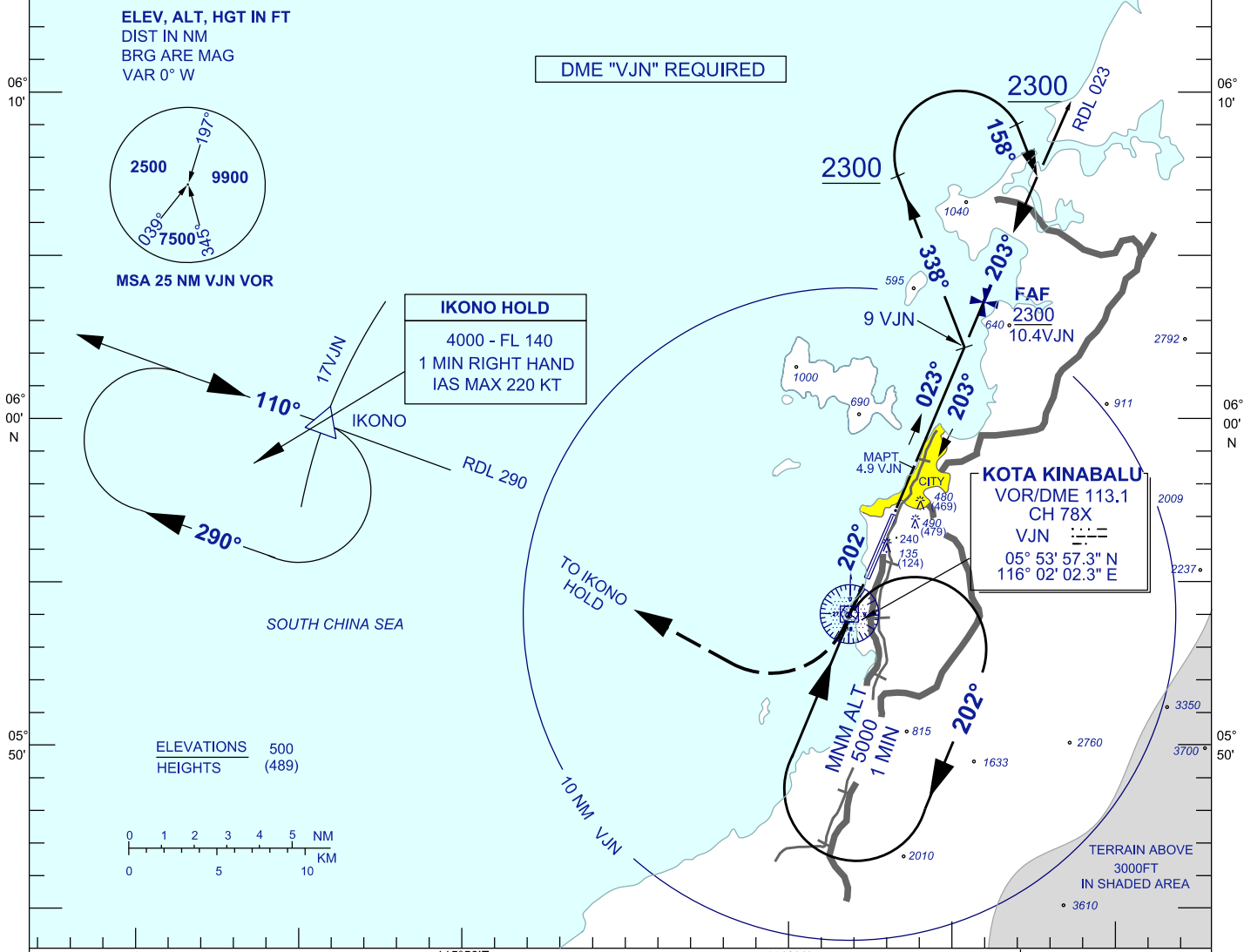
INSTRUMENT APPROACH CHART - ICAO

AERODROME ELEV 14 FT
HEIGHTS RELATED TO
THR RWY 20 - ELEV 11 FT

APP	119.1
TWR	118.3
GND	121.6
ATIS	127.4

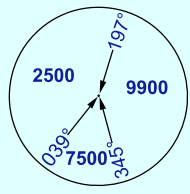
**KOTA KINABALU/
KOTA KINABALU (WBKK)
RWY 20**

VOR Y



DME "VJN" REQUIRED

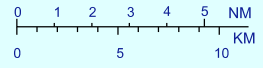
ELEV, ALT, HGT IN FT
DIST IN NM
BRG ARE MAG
VAR 0° W



IKONO HOLD
4000 - FL 140
1 MIN RIGHT HAND
IAS MAX 220 KT

KOTA KINABALU
VOR/DME 113.1
CH 78X
VJN
05° 53' 57.3" N
116° 02' 02.3" E

ELEVATIONS 500
HEIGHTS (489)

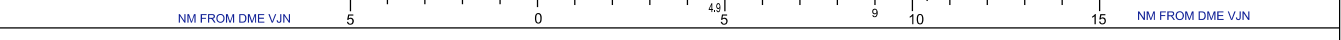
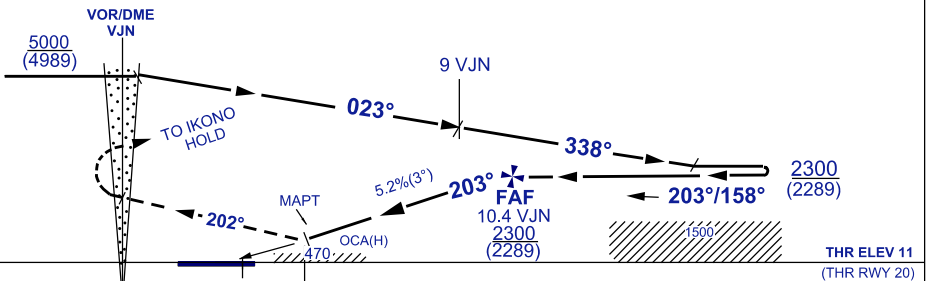


TRANSITION ALT 11000

DIST BY DME (VJN)	10.4	9.4	8.4	7.4	6.4	5.4	MAPT / 4.9
ALT 3° APCH PATH (FT)	2300(2289)	1982(1971)	1664(1653)	1346(1335)	1028(1017)	710(699)	630(619)

MISSED APPROACH

CLIMB ON TRACK 202°, ON PASSING VJN VOR,
TURN RIGHT, TRACK TO IKONO HOLD,
CLIMB TO 4000 FT, OR AS DIRECTED BY ATC



OCA (H) FT		A	B	C	D
STRAIGHT-IN APPROACH	VOR / DME	630 (619) / 4.9 VJN			
CIRCLING/MNM VIS(NM)		850 (839) / 1.0	850 (839) / 1.5	1300 (1289) / 2.0	1600 (1589) / 2.5

GROUND SPEED(KT)		70	90	120	150	180
FAF - MAPT = 5.5 NM	MIN : SEC	4:42	3:39	2:45	2:12	1:50
RATE OF DESCENT (3°)	FT/ MIN	371	476	634	793	951