

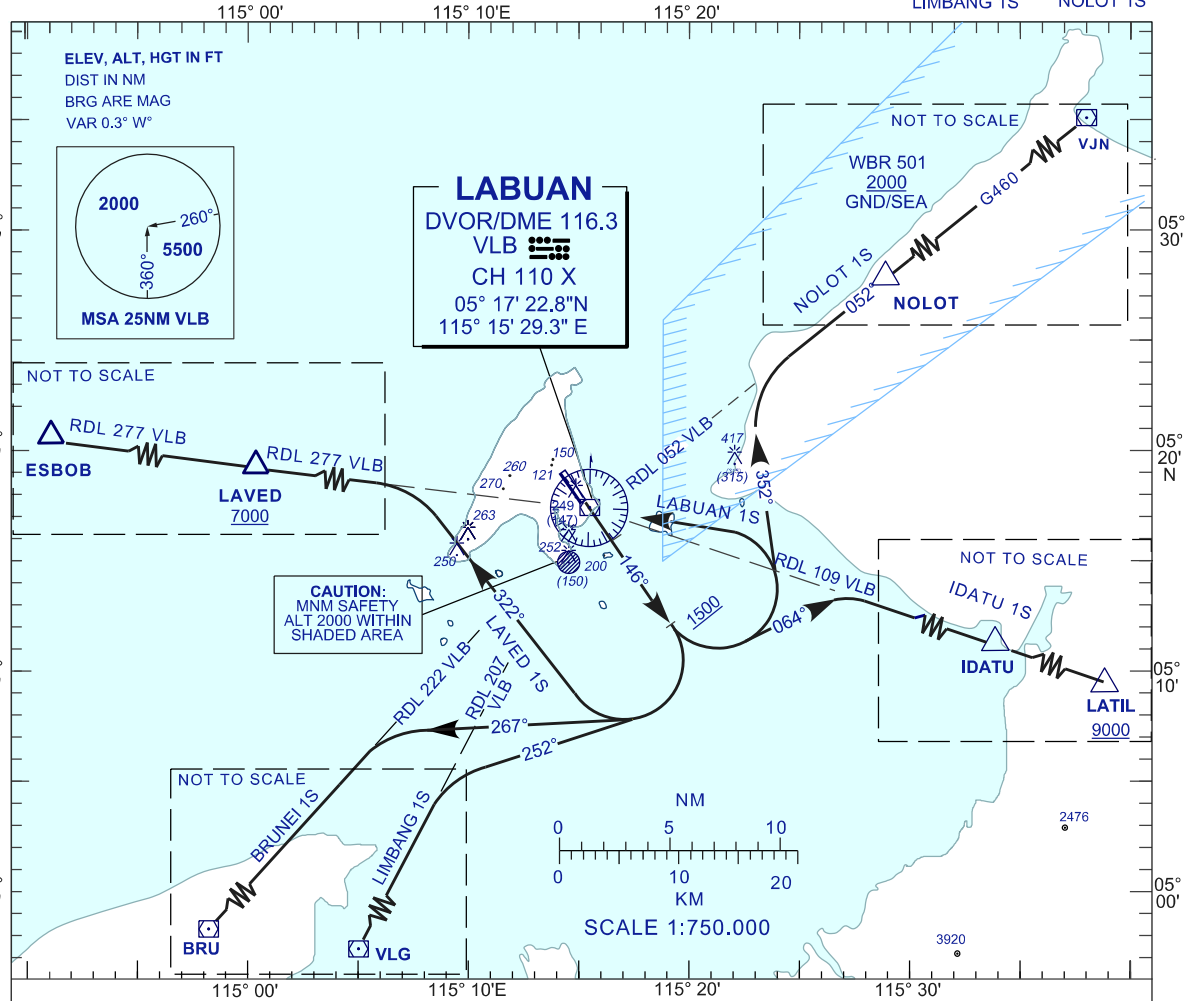
**STANDARD DEPARTURE CHART  
INSTRUMENT (SID) - ICAO**

TRANSITION ALTITUDE  
11,000 FT

APP 119.70, 249.30  
TWR 118.10, 238.10  
SMC 118.35, 235.10  
ATIS 126.85

**LABUAN/LABUAN (WBKL)  
DEPARTURES RWY 14**

LAVED 1S  
BRUNEI 1S  
LIMBANG 1S  
IDATU 1S  
NOLOT 1S



**COMMUNICATION FAILURE :**

- SQUAWK 7600°  
IF UNDER PILOT NAVIGATION, MAINTAIN LAST ASSIGNED LEVEL
- FOR 3 MINUTES, IF NO ONWARD CLEARANCE IS RECEIVED.  
SUBSEQUENTLY CLIMB TO COMPLY WITH SID.
- IF UNDER RADAR VECTURING : MAINTAIN VECTOR FOR 2 MINUTES,  
IF BELOW MSA, CLIMB TO INTERCEPT CLEARED  
OR PREVIOUSLY ASSIGNED SID TO DESTINATION.

INITIAL CLIMB PROCEDURE	DESIGNATOR	SID DESCRIPTION
AFTER TAKE-OFF TRACK 146° AT 1500FT OR ABOVE TURN RIGHT	LAVED ONE SIERRA DEPARTURE	TRACK 322° TO INTERCEPT RDL 277 VLB VOR OUTBOUND TO LAVED THEN ESBOB
	BRUNEI ONE SIERRA DEPARTURE	TRACK 267° TO INTERCEPT RDL 222 VLB VOR TO BRU VOR
	LIMBANG ONE SIERRA DEPARTURE	TRACK 252° TO INTERCEPT RDL 207 VLB TO VLG VOR
AFTER TAKE-OFF TRACK 146° AT 1500FT OR ABOVE TURN LEFT	NOLOT ONE SIERRA DEPARTURE	TRACK 352° TO INTERCEPT RDL 052 VLB VOR OUTBOUND TO NOLOT THEN VJN VOR(G460)
	IDATU ONE SIERRA DEPARTURE	TRACK 064° TO INTERCEPT RDL 109 VLB VOR OUTBOUND TO IDATU THEN LATIL  NOTE : PDG 6.1% UNTIL 9000
	LABUAN ONE SIERRA DEPARTURE	TRACK DCT TO VLB VOR THEN RDL 277 OUTBOUND