

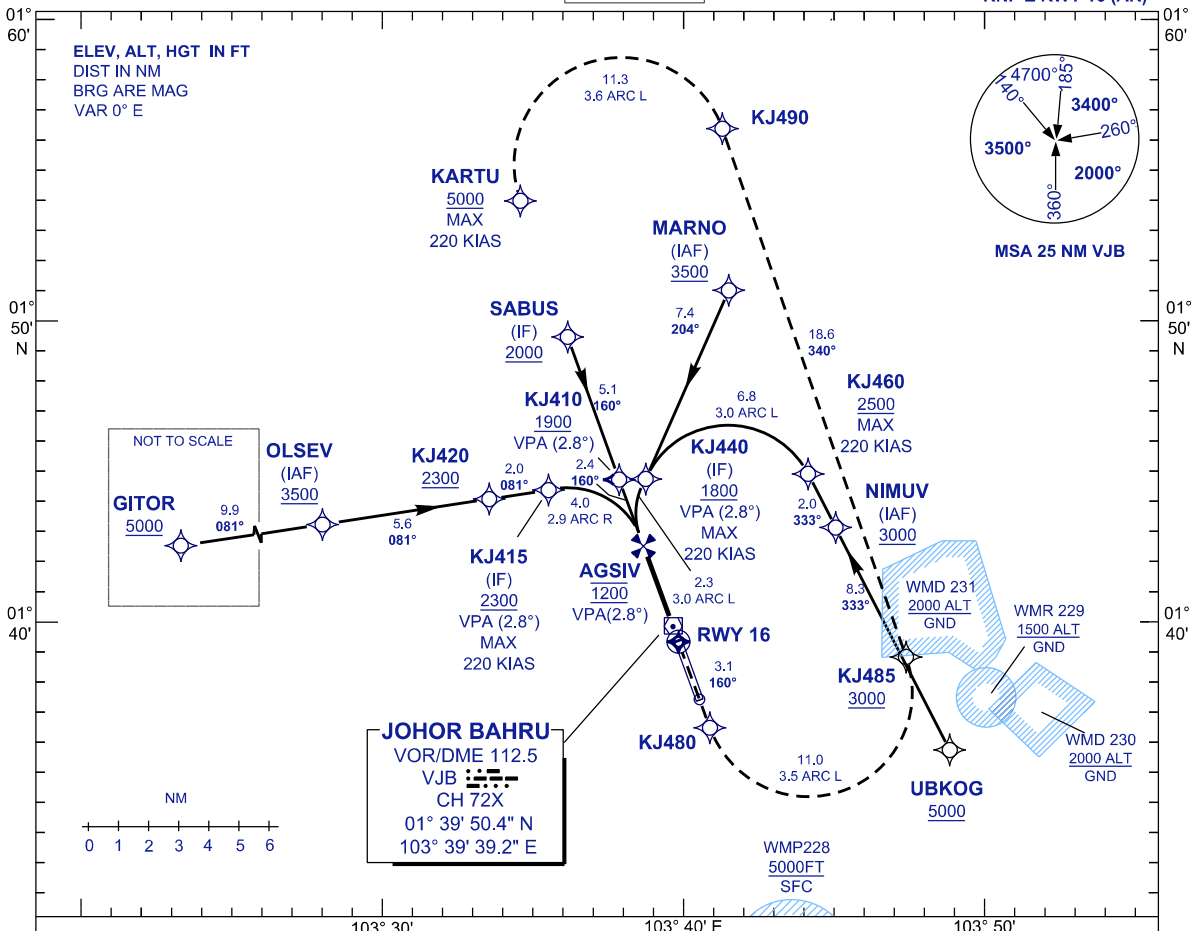
**INSTRUMENT  
APPROACH  
CHART - ICAO**

**AERODROME ELEV 135 FT**  
HEIGHT RELATED TO  
THR RWY 16 - ELEV 135 FT

APP 124.70 (P)  
121.05 (S)  
TWR 118.15  
SMC 121.80  
ATIS 123.05

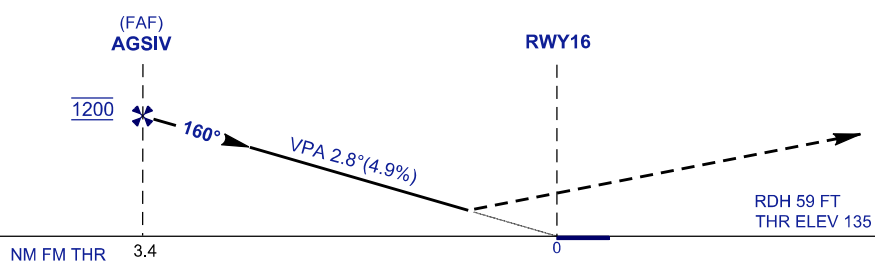
**JOHOR BAHRU/SENAI  
INTERNATIONAL AIRPORT (WMKJ)**

**RNP Z RWY 16 (AR)**



TRANSITION LEVEL FL 130  
TRANSITION ALT 11000

**MISSED APPROACH**  
CLIMB TO 5000 ON RNP MISSED APPROACH  
TRACK TO KARTU OR AS DIRECTED BY ATC. MAX  
220 KIAS UNTIL TURN COMPLETE AT KARTU.



OCA/H	
ACFT CAT.	C      D
RNP 0.3	<b>786 (651)</b>

GROUND SPEED - KT	70	90	100	120	140	160
RATE OF DESCENT (2.8°) ( FEET/MIN )	347	446	495	594	693	792

DISTANCE TO THRESHOLD (NM)	3.4	3.0	2.0
ALTITUDE (FT)	1200	1090	780

- 1. AUTHORIZATION REQUIRED**
- 2. GNSS REQUIRED**
- 3. RF REQUIRED**
- 4. APPROACH NOT AUTHORIZED WHEN AIRPORT TEMPERATURE BELOW 18°C OR ABOVE 40°C
- 5. MISSED APPROACH REQUIRES RNP<1.0 TO KJ480
- 6. MISSED APPROACH CLIMB GRADIENT 2.7% REQUIRED TO 3000
- 7. PAPI AND VERTICAL PATH ANGLE NOT COINCIDENT
- 8. WMKJ ALTIMETER SETTING REQUIRED.
- 9. RNP 0.3 REQUIRED FROM IAFS/IF TO RWY