

**INSTRUMENT
APPROACH
CHART - ICAO**

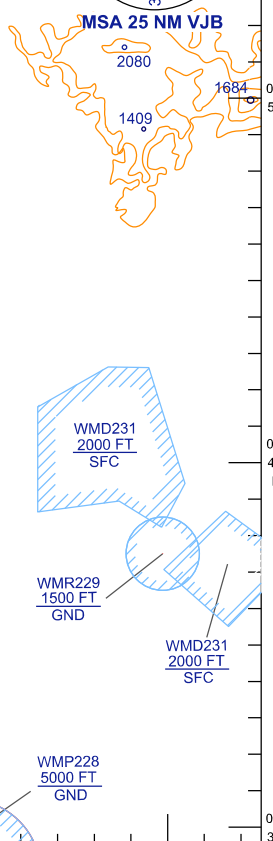
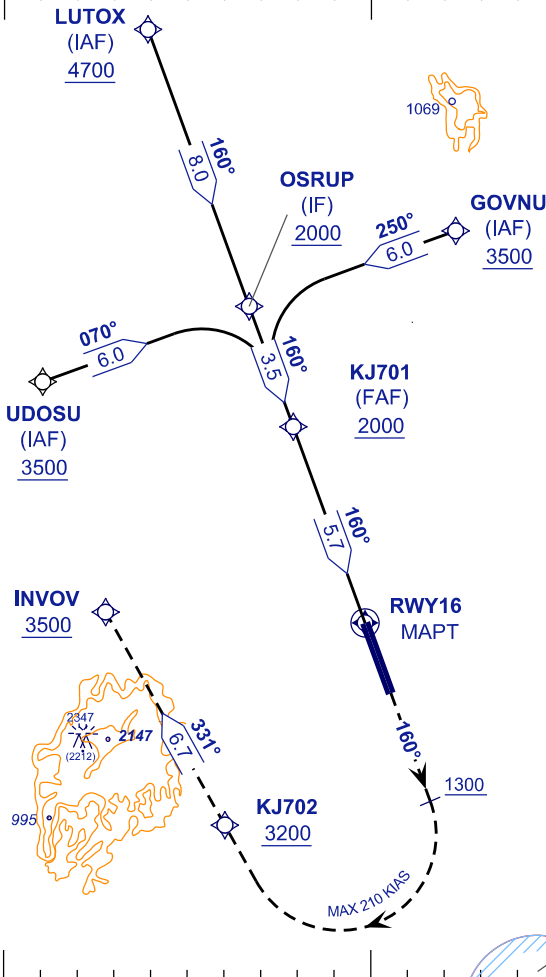
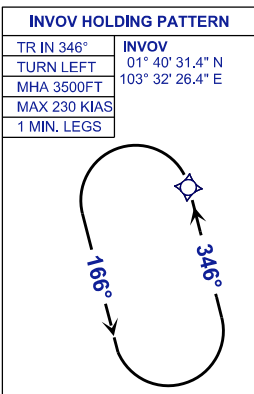
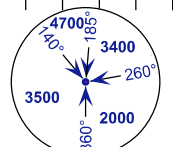
AERODROME ELEV 135FT
HEIGHT RELATED TO
THR RWY 16 - ELEV 135FT

APP 124.70 (P)
121.05 (S)
TWR 118.15
SMC 121.80
ATIS 123.05

**JOHOR BAHRU/SENAI
INTERNATIONAL AIRPORT (WMKJ)
RNP X RWY 16**

ELEV, ALT, HGT IN FT
DIST IN NM
BRG ARE MAG
VAR 0° E

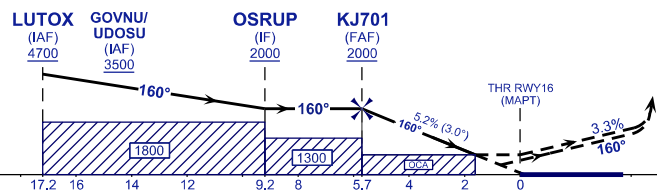
103° 30' 103° 40' E 103° 50'



TRANSITION LEVEL FL 130
TRANSITION ALT 11,000 FT
TCH 59 FT

MISSED APPROACH:
CLIMB TO 3500FT OR ABOVE ON TR 160°. ON PASSING 1300FT TURN RIGHT, DIRECT TO KJ702 THEN INV OV AND HOLD, OR AS DIRECTED BY ATC.

CAUTION:
MISSED APPROACH TURN SPEED MAX 210 KIAS, MIN 3.3% CLIMB GRADIENT TILL PASSING 3500FT.



THR ELEV 135
NM TO THR 16

| | | | | |
|-----------|-----------|---|---|---|
| OCA (OCH) | A | B | C | D |
| LNAV | 730 (595) | | | |
| LNAV/VNAV | 412 (277) | | | |

NOTES:
- GNSS REQUIRED.
- WMKJ QNH SETTING REQUIRED.
- VPA AND PAPI NOT COINCIDENT.
- BARO-VNAV NOT AUTHORIZED WHEN AIRPORT TEMPERATURE BELOW 18°C OR ABOVE 40°C.

| | | | | | | |
|--|------|------|------|------|------|------|
| DIST THR RWY 16 (NM) | 5.8 | 4.8 | 3.8 | 2.8 | 1.8 | 0.8 |
| ALTITUDE (FT) | 2000 | 1722 | 1404 | 1085 | 767 | 449 |
| GROUND SPEED (KT) | 80 | 100 | 120 | 140 | 160 | 180 |
| FAF - RWY16 (5.7NM) (MIN:SEC) | 4:15 | 3:24 | 2:50 | 2:26 | 2:08 | 1:53 |
| RATE OF DESCEND (318.5 FT/NM) (FT/MIN) | 420 | 530 | 640 | 740 | 850 | 960 |