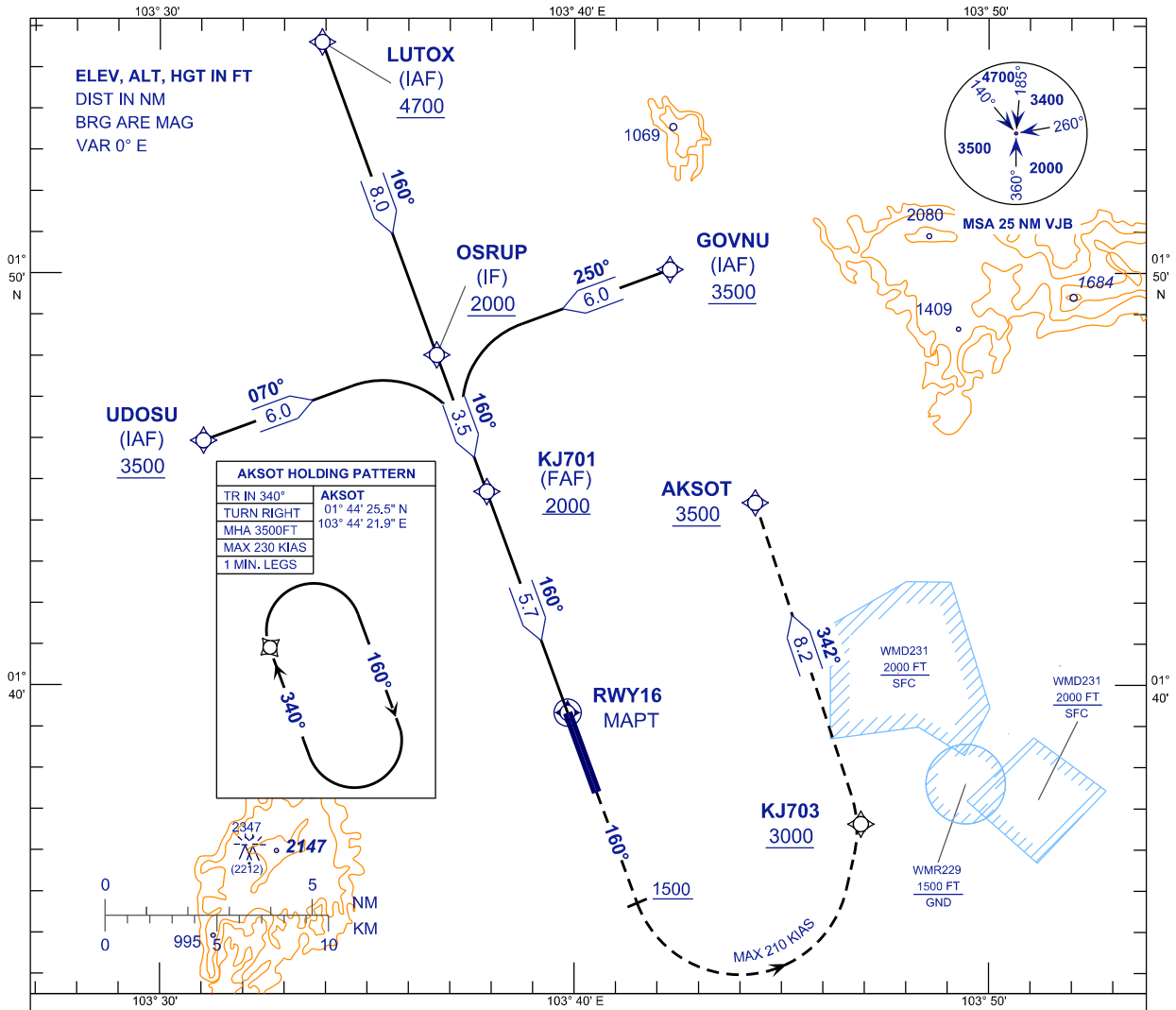


**INSTRUMENT
APPROACH
CHART - ICAO**

AERODROME ELEV 135FT
HEIGHT RELATED TO
THR RWY 16 - ELEV 135FT

APP 124.70 (P)
121.05 (S)
TWR 118.15
SMC 121.80
ATIS 123.05

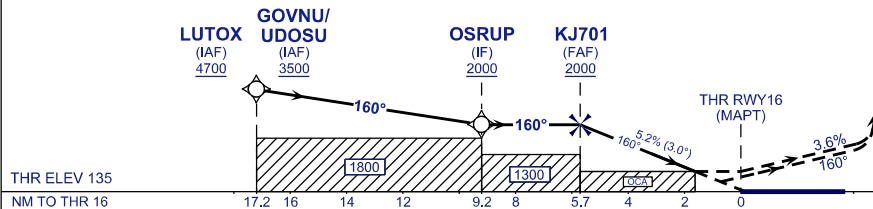
**JOHOR BAHRU/SENAI
INTERNATIONAL AIRPORT (WMKJ)
RNP Y RWY 16**



TRANSITION LEVEL FL 130
TRANSITION ALT 11,000 FT
TCH 59 FT

MISSED APPROACH:
CLIMB TO 3500FT OR ABOVE ON TR 160°, ON PASSING 1500FT TURN LEFT, DIRECT TO KJ703 THEN AKSOT AND HOLD, OR AS DIRECTED BY ATC.

CAUTION:
MISSED APPROACH TURN SPEED MAX 210 KIAS, MIN 3.6% CLIMB GRADIENT TILL PASSING 3500FT.



OCA (OCH)	A	B	C	D
LNAV	730 (595)			
LNAV/VNAV	412 (277)			
NOTES: - GNSS REQUIRED. - WMKJ QNH SETTING REQUIRED. - VPA AND PAPI NOT COINCIDENT. - BARO-VNAV NOT AUTHORIZED WHEN AIRPORT TEMPERATURE BELOW 18°C OR ABOVE 40°C.				

DIST THR RWY 16 (NM)	5.8	4.8	3.8	2.8	1.8	0.8
ALTITUDE (FT)	2000	1713	1395	1076	758	439
GROUND SPEED (KT)	80	100	120	140	160	180
FAF - RWY16 (5.7NM) (MIN:SEC)	4:17	3:25	2:51	2:27	2:08	1:54
RATE OF DESCEND (318.5 FT/NM) (FT/MIN)	420	530	640	740	850	960

CHANGES : TURN SPEED IAS 230KT TO MAX 230KIAS,
CATIS TO ATIS IN FREQUENCY BOX,
REMOVE DIST 4.9 .