

**INSTRUMENT
APPROACH
CHART - ICAO**

AERODROME ELEV 135FT
HEIGHT RELATED TO
THR RWY 16 - ELEV 135FT

APP 124.70 (P)
121.05 (S)
TWR 118.15
SMC 121.80
ATIS 123.05

**JOHOR BAHRU/SENAI
INTERNATIONAL AIRPORT (WMKJ)
VOR Y RWY 16**

ELEV, ALT, HGT IN FT
DIST IN NM
BRG ARE MAG
VAR 0° E

RUNEM HOLDING PATTERN

TR IN 095°	RUNEM
TURN RIGHT	01° 40' 52.5" N
MHA 3500FT	103° 28' 43.0" E
MAX 230 KIAS	RDL 275/11.0D VJB
1 MIN. LEGS	

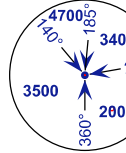
RUNEM
11.0D VJB
3500

LUTOX
16.7D VJB
4700

OSRUP (IF)
8.7D VJB
2000

KJ701 (FAF)
5.2D VJB
2000

JOHOR BAHRU
VOR/DME 112.5
VJB
CH 72X
01° 39' 50.4" N
103° 39' 39.2" E



MSA 25 NM VJB

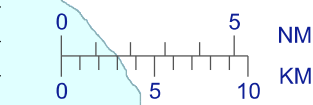
VJB VOR/DME REQUIRED

WMD231
2000 FT
SFC

WMR229
1500 FT
GND

WMD230
2000 FT
SFC

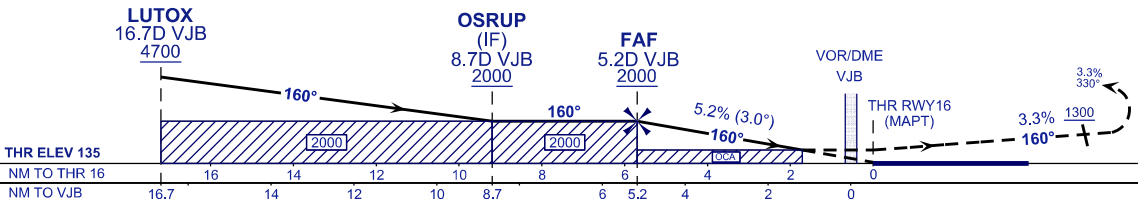
WMP228
5000 FT
GND



TRANSITION LEVEL FL 130
TRANSITION ALT 11,000 FT

MISSED APPROACH:
CLIMB TO 3500FT OR ABOVE ON TR 160°, ON PASSING 1300FT TURN RIGHT TR 335° TO INTERCEPT RDL275 OUTBOUND TO RUNEM AND HOLD, OR AS DIRECTED BY ATC.

CAUTION:
MISSED APPROACH TURN SPEED MAX 210 KIAS, MIN 3.3% CLIMB GRADIENT TILL PASSING 3500FT, TO CROSS RDL 215 VJB AT 3200FT OR ABOVE.



OCA (OCH)	A	B	C	D
VOR/DME	730 (595)			

DME VJB (NM)	5.2	4.2	3.2	2.2	1.2	0.2
DIST THR RWY16 (NM)	5.7	4.7	3.7	2.7	1.7	0.7
ALTITUDE (FT)	2000	1690	1372	1054	735	417
GROUND SPEED (KT)	80	100	120	140	160	180
FAF - RWY16 (5.7NM) (MIN:SEC)	4:17	3:25	2:51	2:27	2:08	1:54
RATE OF DESCEND (318.5 FT/NM) (FT/MIN)	420	530	640	740	850	960

CHANGES : CATIS TO ATIS IN FREQUENCY BOX,
TURN SPEED IAS 230KT TO MAX 230KIAS.