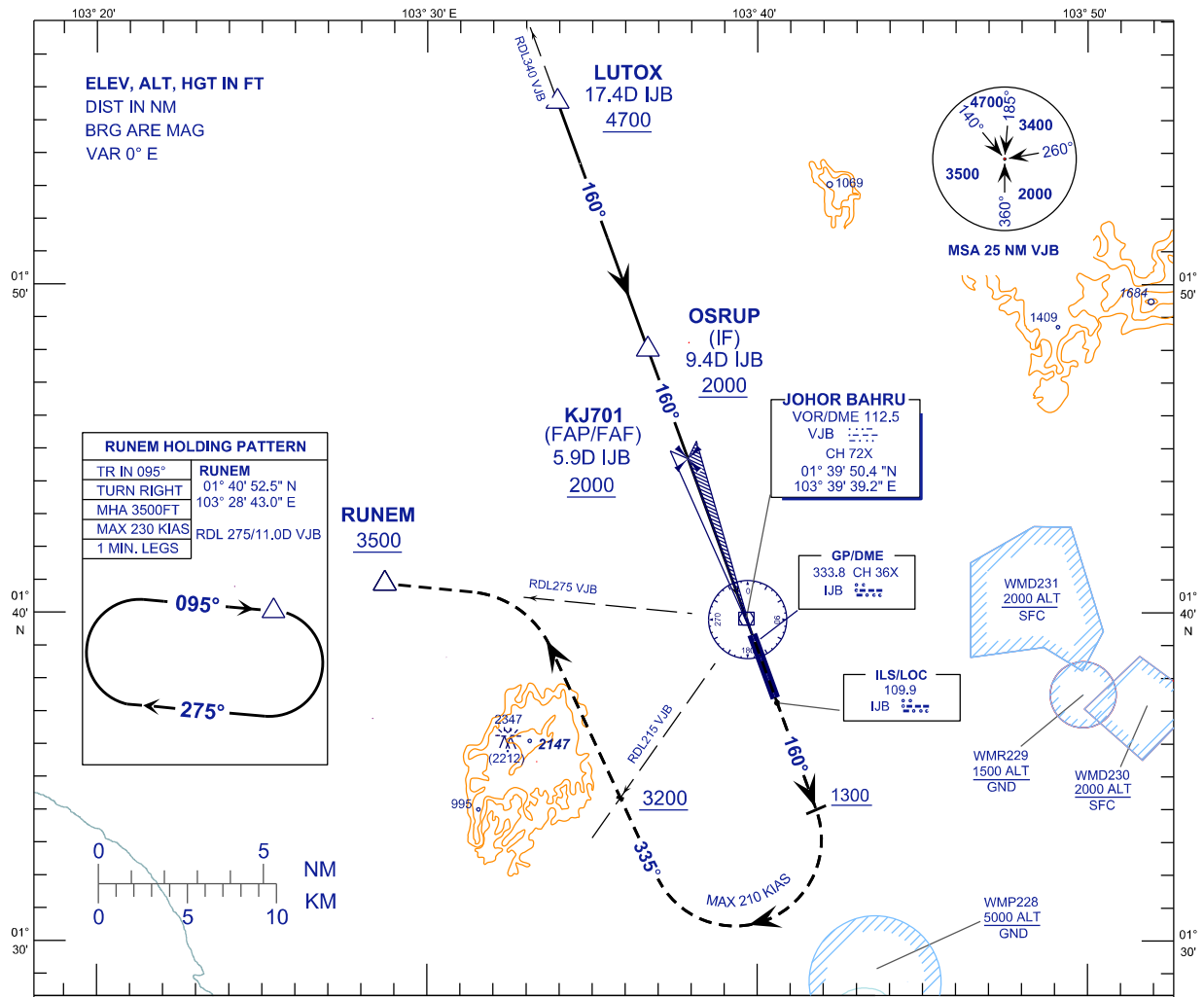


**INSTRUMENT
APPROACH
CHART - ICAO**

AERODROME ELEV 135FT
HEIGHT RELATED TO
THR RWY 16 - ELEV 135FT

APP 124.70 (P)
121.05 (S)
TWR 118.15
SMC 121.80
ATIS 123.05

**JOHOR BAHRU/SENAI
INTERNATIONAL AIRPORT (WMKJ)
ILS Y OR LOC Y RWY 16**

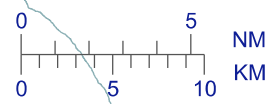


ELEV, ALT, HGT IN FT
DIST IN NM
BRG ARE MAG
VAR 0° E

RUNEM HOLDING PATTERN

| | |
|--------------|-------------------|
| TR IN 095° | RUNEM |
| TURN RIGHT | 01° 40' 52.5" N |
| MHA 3500FT | 103° 28' 43.0" E |
| MAX 230 KIAS | RDL 275/11.0D VJB |
| 1 MIN. LEGS | |

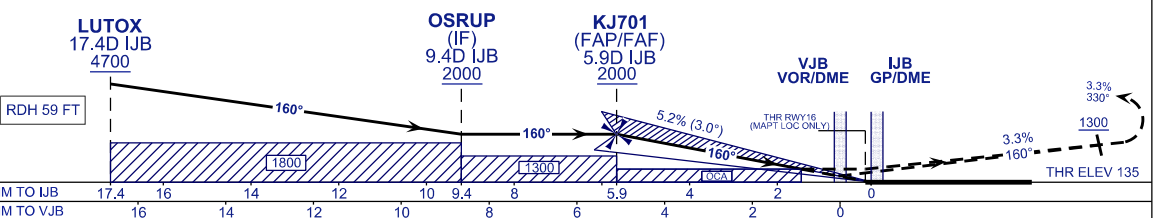
095° →
← 275°



TRANSITION LEVEL FL 130
TRANSITION ALT 11,000 FT

MISSED APPROACH:
CLIMB TO 3500FT OR ABOVE ON TR 160°. ON PASSING 1300FT TURN RIGHT TR 335° TO INTERCEPT RDL275 TO RUNEM AND HOLD, OR AS DIRECTED BY ATC.

CAUTION:
MISSED APPROACH TURN SPEED MAX 210 KIAS, MIN 3.3% CLIMB GRADIENT TILL PASSING 3500FT, TO CROSS RDL215 VJB 3200FT OR ABOVE.



| | | | | |
|-------------------|-----------|---|---|---|
| OCA (OCH) | A | B | C | D |
| ILS/DME CAT I | 374 (239) | | | |
| LOC/DME (GP INOP) | 730 (595) | | | |

| | | | | | | |
|--|------|------|------|------|------|------|
| DME IJB (NM) | 5.9 | 4.9 | 3.9 | 2.9 | 1.9 | 0.9 |
| DIST THR RWY16 (NM) | 5.7 | 4.7 | 3.7 | 2.7 | 1.7 | 0.7 |
| ALTITUDE (FT) | 2000 | 1690 | 1371 | 1053 | 734 | 415 |
| GROUND SPEED (KT) | 80 | 100 | 120 | 140 | 160 | 180 |
| FAP - RWY16 (5.7NM) (MIN:SEC) | 4:15 | 3:24 | 2:50 | 2:26 | 2:08 | 1:53 |
| RATE OF DESCENT (318.5 FT/NM) (FT/MIN) | 420 | 530 | 640 | 740 | 850 | 960 |

CHANGES : CATIS TO ATIS IN FEQUENCY BOX.
TURN SPEED IAS 230KT TO MAX 230KIAS,
RDL340 IJB TO RDL340 VJB.