

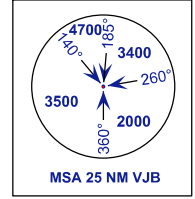
**STANDARD DEPARTURE CHART
INSTRUMENT (SID) - ICAO**

TRANSITION ALTITUDE
11000FT

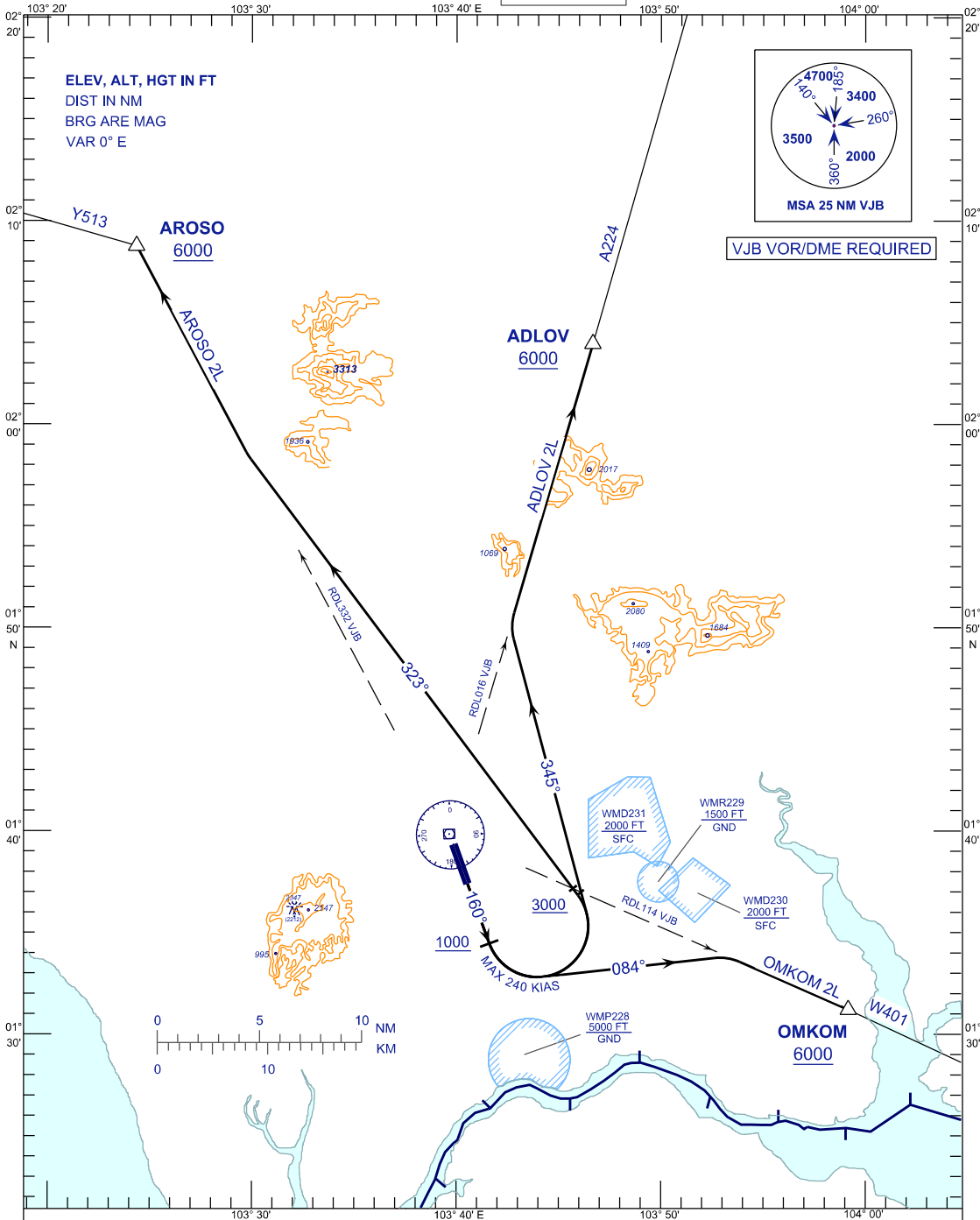
APP 124.70 (P)
121.05 (S)
TWR 118.15
SMC 121.80
ATIS 123.05

**JOHOR BAHRU/SENAI
INTERNATIONAL AIRPORT (WMKJ)
RWY 16**

AROSO 2L ADLOV 2L
OMKOM 2L



VJB VOR/DME REQUIRED



COMMUNICATION FAILURE:

- SET TRANSPONDER TO MODE A/C CODE 7600.
- IF UNDER PILOT NAVIGATION, MAINTAIN ASSIGNED LEVEL FOR 3 MINUTES. IF NO ONWARD CLEARANCE IS RECEIVED, SUBSEQUENTLY CLIMB TO COMPLY WITH SID.
- IF UNDER RADAR VECTORED, MAINTAIN VECTOR FOR 2 MINUTES, IF BELOW MSA CLIMB TO MSA, THEN TRACK TO INTERCEPT CLEARED OR PREVIOUSLY ASSIGNED SID TO DESTINATION.

CHANGES : CATIS TO ATIS ON FREQUENCY BOX.