

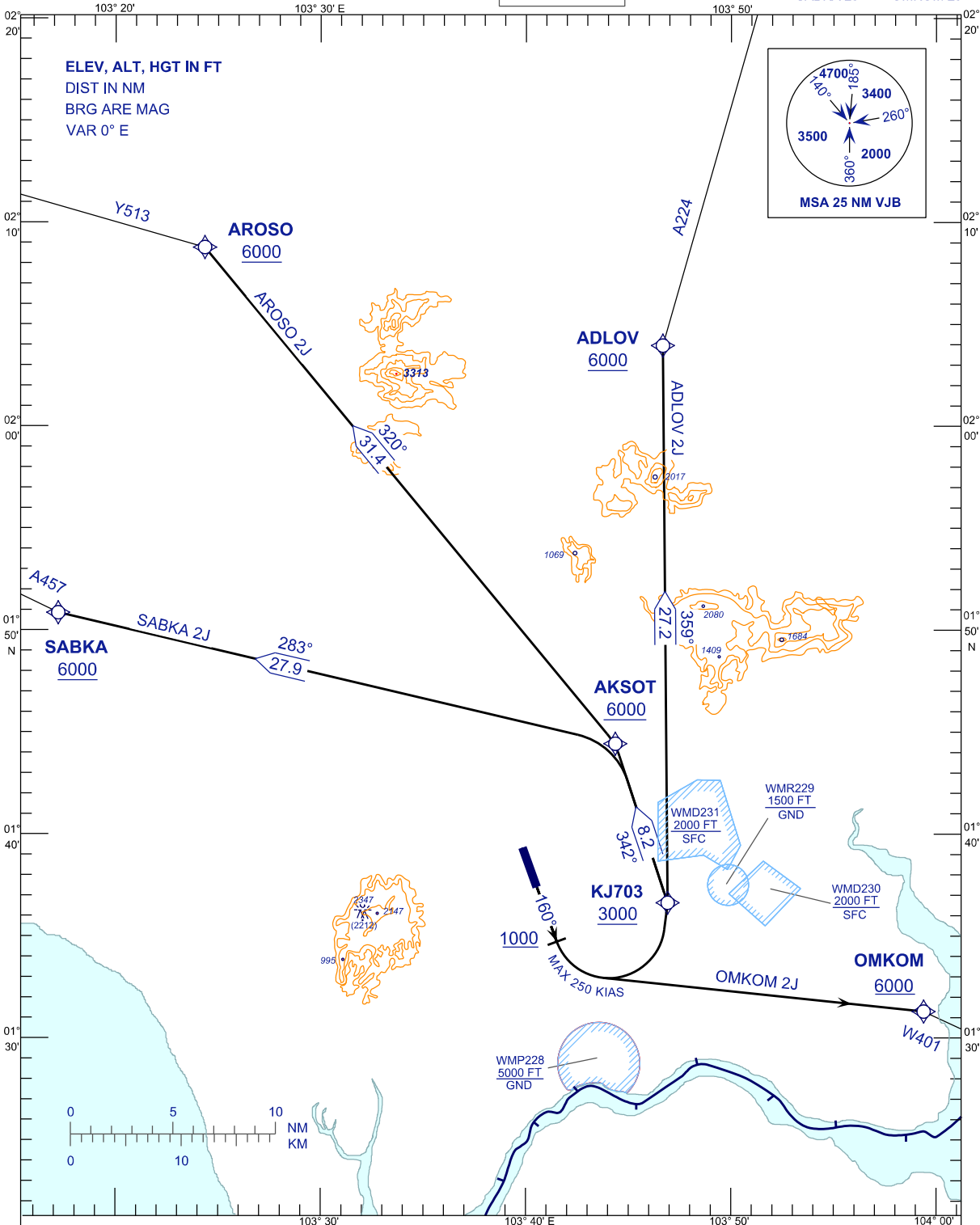
**STANDARD DEPARTURE CHART
INSTRUMENT (SID) - ICAO**

TRANSITION ALTITUDE
11000FT

| | |
|------|------------|
| APP | 124.70 (P) |
| TWR | 121.05 (S) |
| SMC | 118.15 |
| ATIS | 123.05 |

**JOHOR BAHRU/SENAI
INTERNATIONAL AIRPORT (WMKJ)
RNAV RWY 16**

AROSO 2J
SABKA 2J
ADLOV 2J
OMKOM 2J



COMMUNICATION FAILURE:

- SET TRANSPONDER TO MODE A/C CODE 7600.
- IF UNDER PILOT NAVIGATION, MAINTAIN ASSIGNED LEVEL FOR 3 MINUTES. IF NO ONWARD CLEARANCE IS RECEIVED, SUBSEQUENTLY CLIMB TO COMPLY WITH SID.
- IF UNDER RADAR VECTORED, MAINTAIN VECTOR FOR 2 MINUTES, IF BELOW MSA CLIMB TO MSA, THEN TRACK TO INTERCEPT CLEARED OR PREVIOUSLY ASSIGNED SID TO DESTINATION.

CHANGES : DISTANCE 25.9 TO 31.4 BETWEEN AKSOT TO AROSO,
BEARING 316° TO 320° BETWEEN AKSOT TO AROSO,
CATIS TO ATIS IN FREQUENCY BOX.