

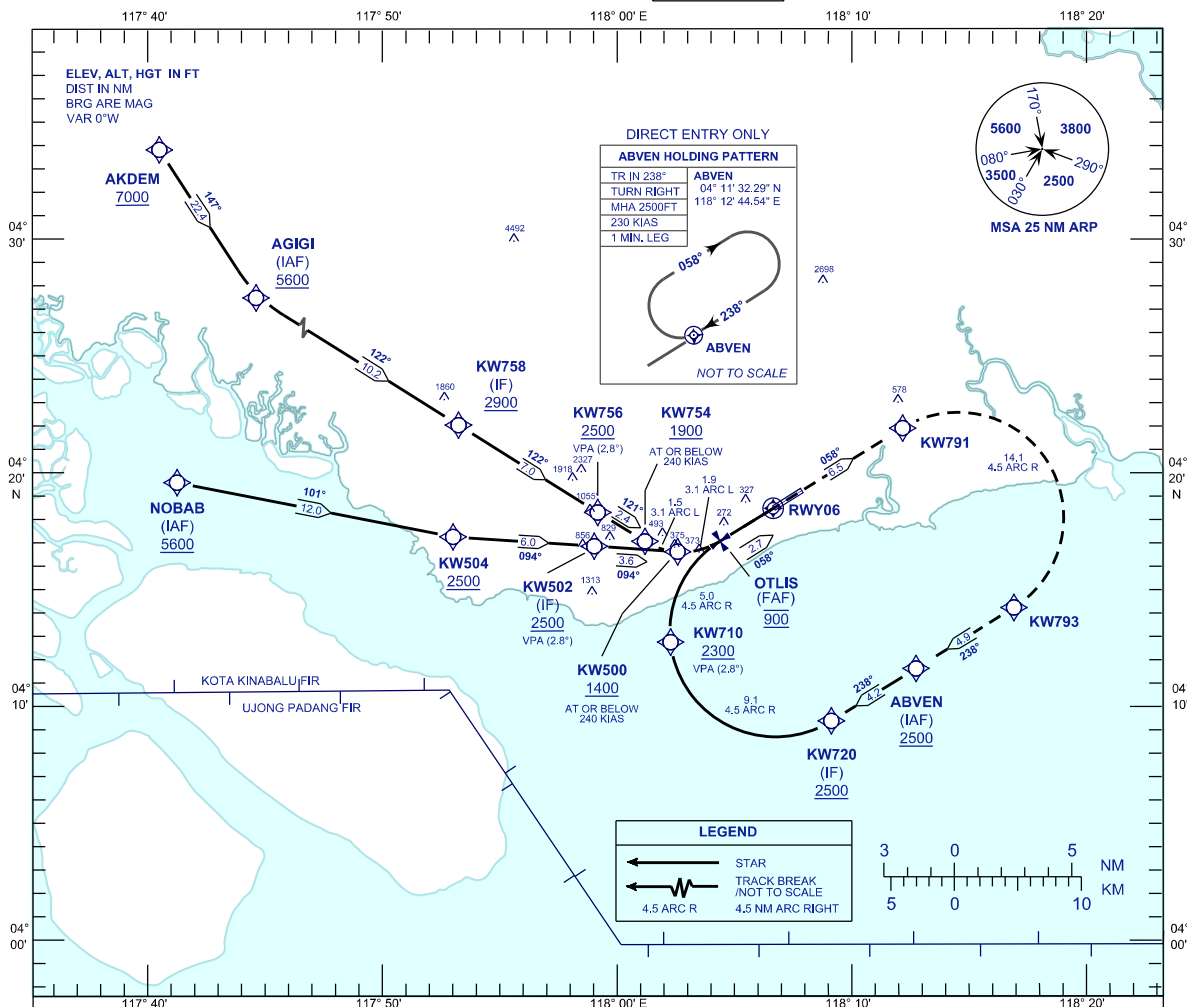
**INSTRUMENT  
APPROACH  
CHART - ICAO**

**AERODROME ELEV 56 FT**  
HEIGHT RELATED TO  
THR RWY 06 - ELEV 53 FT

APP 123.55  
TWR 122.50  
SMC 121.90  
ATIS 126.25

**TAWAU/TAWAU (WBKW)**

**RNP Z RWY 06 (AR)**



VPA 2.8°  
RDH 54FT

**MISSED APPROACH**

CLIMB TO 2500 FT VIA THE RNP MISSED APPROACH  
TRACK TO ABVEN OR AS DIRECTED BY ATC.

TRANSITION LEVEL FL130  
TRANSITION ALT 11000 FT

VSS PENETRATIONS 500 M  
PRIOR TO THR

OTLIS  
(FAF)  
900

RWY06



THR ELEV 53  
NM TO THR 06 2.7

|                            |           |   |                                      |     |     |     |     |     |     |
|----------------------------|-----------|---|--------------------------------------|-----|-----|-----|-----|-----|-----|
| STRAIGHT-IN APPROACH       | OCA (OCH) |   | GROUND SPEED - KT                    | 70  | 90  | 100 | 120 | 140 | 160 |
| CATEGORY OF AIRCRAFT       | C         | D | RATE OF DESCENT (2.8°)<br>( FT/MIN ) | 347 | 446 | 495 | 594 | 693 | 792 |
| RNP 0.3                    | 555 (502) |   | DISTANCE TO THRESHOLD (NM)           | 2.7 | 2   | 1   |     |     |     |
| CIRCLING AND ALTERNATE N/A |           |   | ALTITUDE (FT)                        | 900 | 670 | 370 |     |     |     |

- AUTHORIZATION REQUIRED**
- GNSS REQUIRED**
- RF REQUIRED**
- APPROACH NOT AUTHORIZED WHEN AIRPORT TEMPERATURE BELOW 18°C OR ABOVE 39°C.
- WBKW ALTIMETER SETTING REQUIRED.
- PAPI AND VERTICAL PATH ANGLE NOT COINCIDENT.
- RNP 0.3 REQUIRED FROM IAF'S TO FAF.