

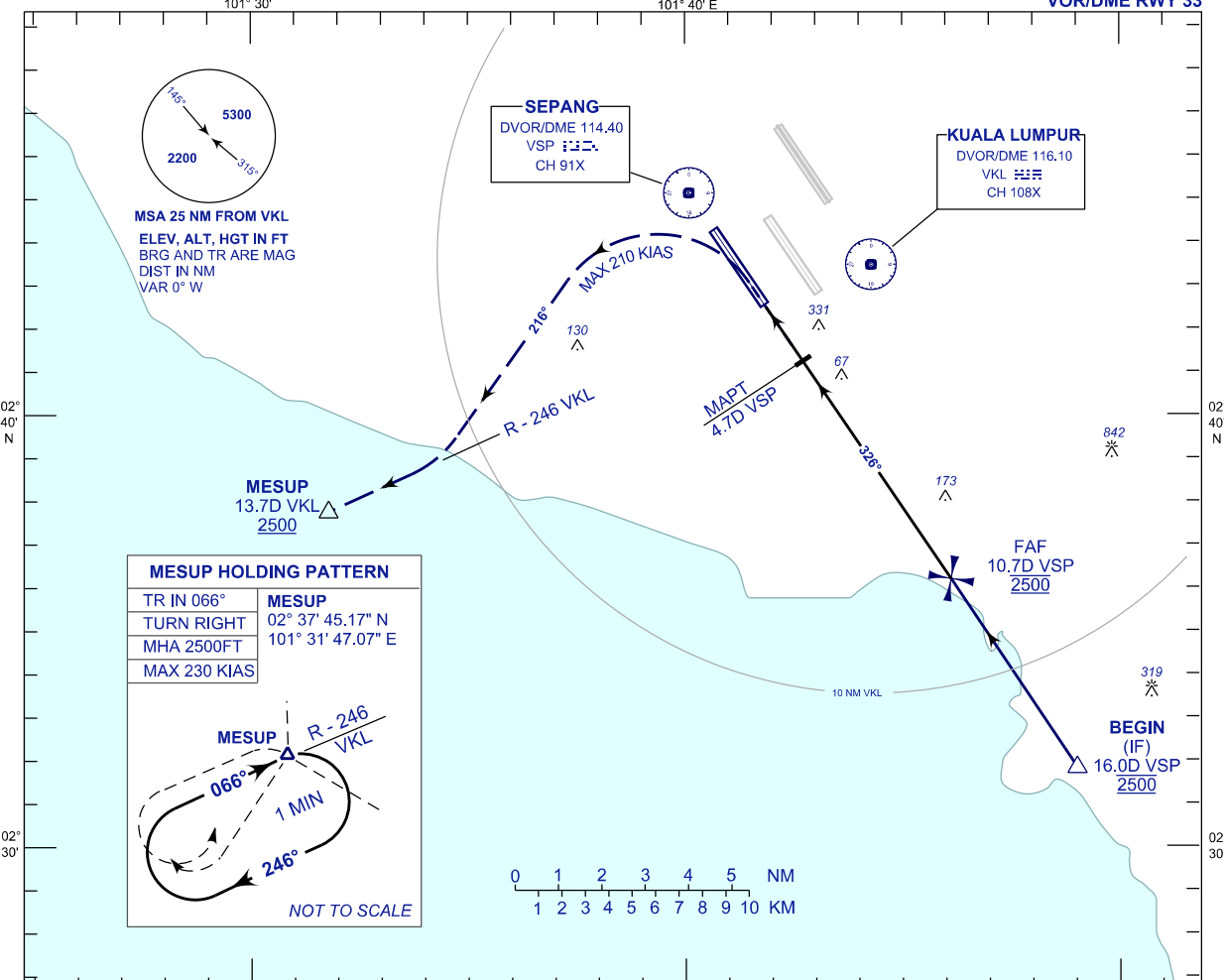
**INSTRUMENT
APPROACH
CHART - ICAO**

AERODROME ELEV 69 FT
HEIGHT RELATED TO
THR RWY 33 - ELEV 28 FT

APP 125.85 119.45 125.10	TWR 119.80	SMC 118.05	ATIS 128.05
-----------------------------------	---------------	---------------	----------------

**SEPANG/KL INTERNATIONAL
AIRPORT (WMKK)**

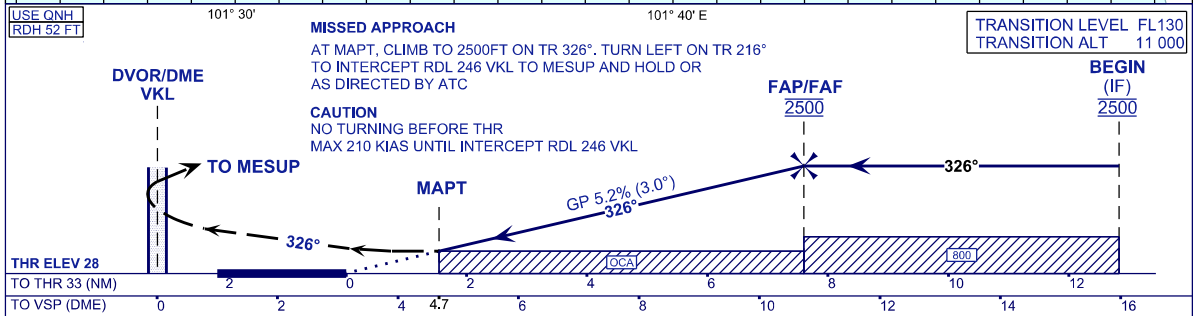
VDOR/DME RWY 33



MESUP HOLDING PATTERN

TR IN 066°	MESUP
TURN RIGHT	02° 37' 45.17" N
MHA 2500FT	101° 31' 47.07" E
MAX 230 KIAS	

NOT TO SCALE



OCA (OCH)	A	B	C	D
VOR / DME	570 (542)			

GROUND SPEED (GS)	KT	80	100	120	140	160	180
FAF - MAPT (6.1 NM)	MIN:SEC	4:33	3:38	3:02	2:36	2:16	2:01
RATE OF DESCEND (318.4 FT/NM)	FT/MIN	420	530	640	740	850	950

DIST VSP (DME)	NM	10.7	9.7	8.7	7.7	6.7	5.7	4.7	3.7
DIST THR/RWY33	NM	7.6	6.6	5.6	4.6	3.6	2.6	1.6	0.6
ALTITUDE	FT	2500	2181	1863	1545	1226	908	590	272