

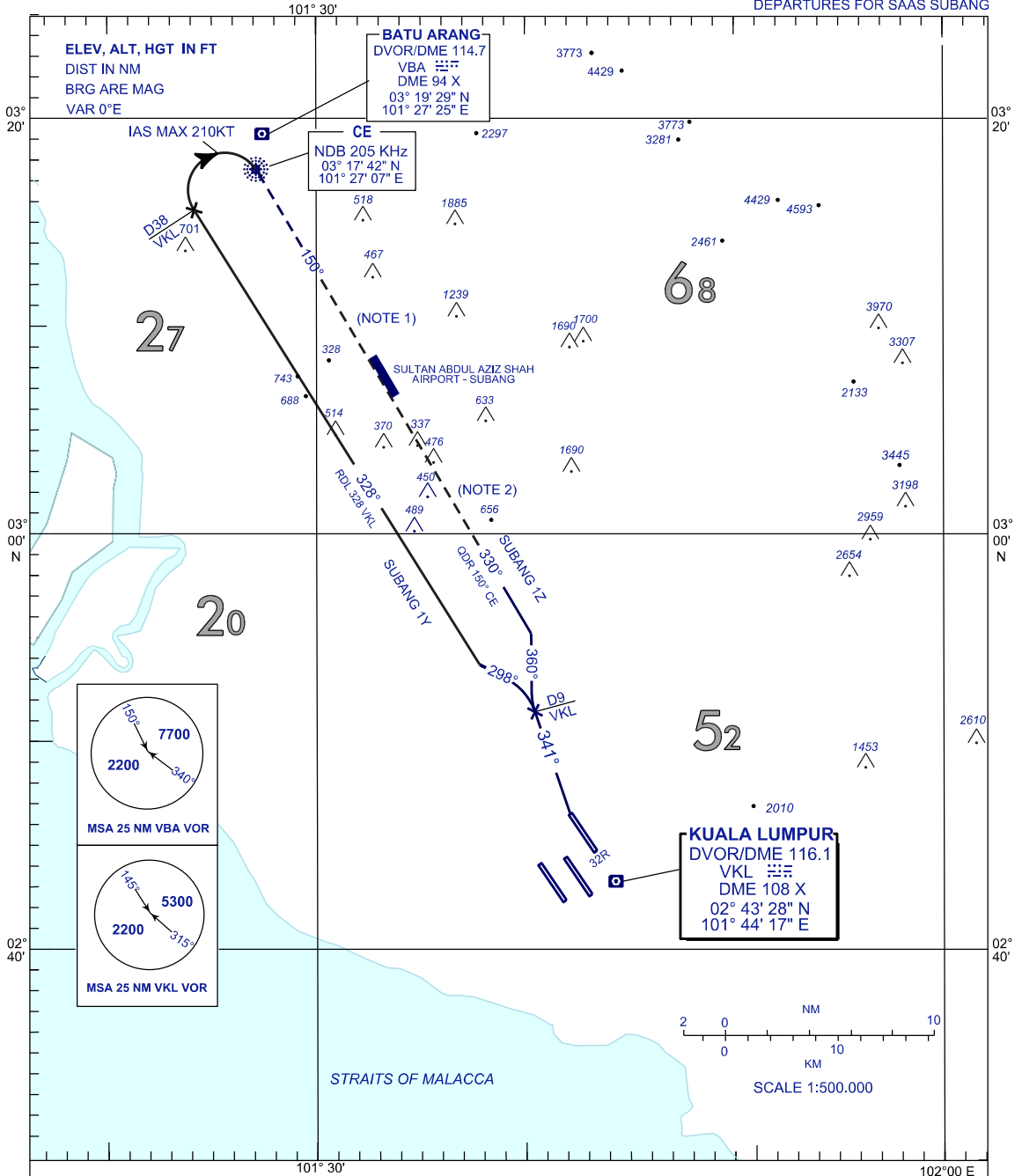
**STANDARD DEPARTURE CHART  
INSTRUMENT (SID) - ICAO**

**SEPANG/KL INTERNATIONAL  
AIRPORT (WMKK)  
RWY 32R**

APP	135.250, 124.200, 118.650
TWR	118.800
GND	121.650
ATIS	126.450

TRANSITION ALT  
11000 FT

DEPARTURES FOR SAAS SUBANG



REMARKS :

- NOTE 1 : EXPECT ILS OR LOC APPROACH RWY15 OR RNP Y APPROACH RWY15
- NOTE 2 : EXPECT RNP Y APPROACH RWY33

**SUBANG 1Z :** AFTER TAKE-OFF PROCEED ON TR 341° UNTIL 9 DME VKL, THEN TURN RIGHT ON TR 360° UNTIL JOINING QDR 150° CE NDB. EXPECT RNP Y APPROACH RWY33.

**SUBANG 1Y :** AFTER TAKE-OFF PROCEED ON TR 341° UNTIL 9 DME VKL, THEN TURN LEFT ON TR 298° TO INTERCEPT AND FOLLOW RDL 328 VKL VOR. AT 38 DME VKL TURN RIGHT (IAS MAX 210KT) TO CE NDB. EXPECT ILS OR LOC APPROACH RWY 15 OR RNP Y APPROACH RWY15.

CHANGES : AT TEXT BELOW, CHANGE RNAV (GNSS) TO RNP Y