

**INSTRUMENT
APPROACH
CHART - ICAO**

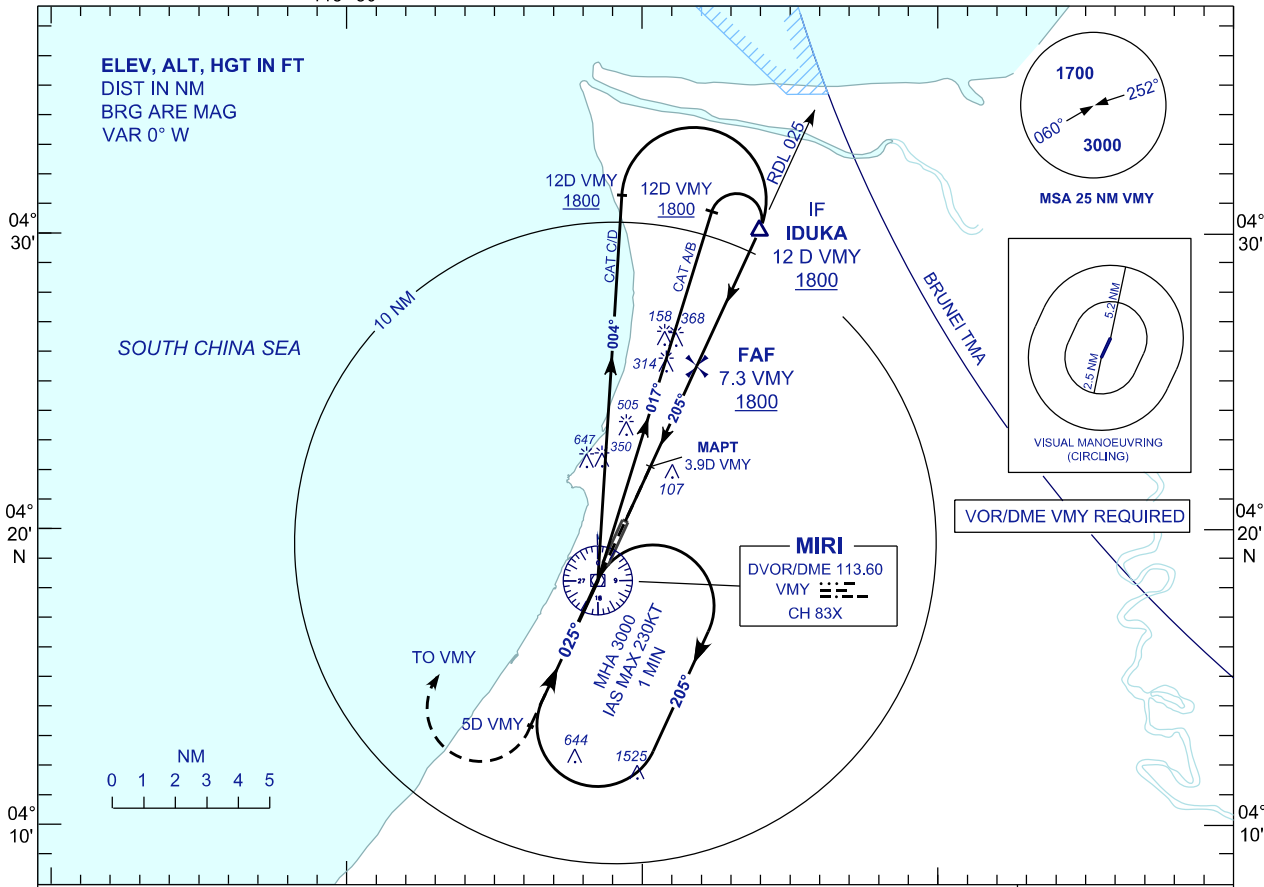
AERODROME ELEV 59 FT
HEIGHTS RELATED TO
THR RWY 20 - ELEV 59 FT

APP 129.9(P)
122.7(S)
TWR 123.3
SMC 121.9
CATIS 127.0

MIRI/MIRI (WBGR)
RWY 20

VOR Y

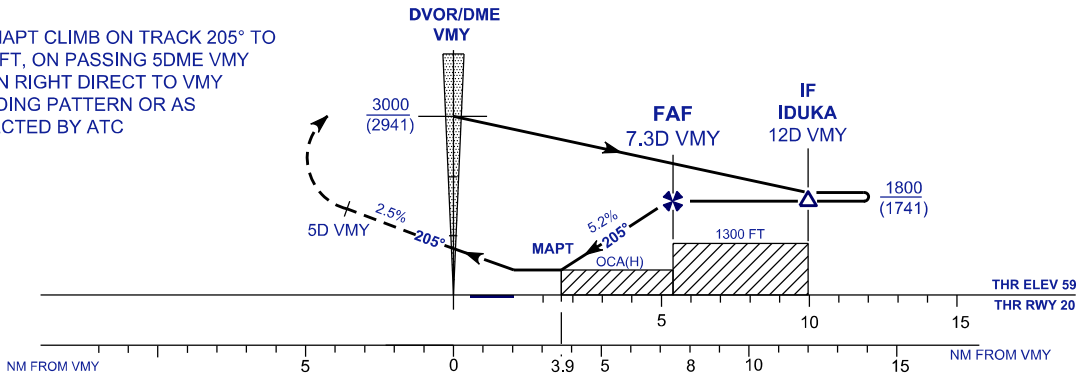
113° 50'



MISSED APPROACH

AT MAPT CLIMB ON TRACK 205° TO 3000FT, ON PASSING 5DME VMY TURN RIGHT DIRECT TO VMY HOLDING PATTERN OR AS DIRECTED BY ATC

TRANSITION LEVEL FL 130
TRANSITION ALT 11 000



OCA (H) FT				
ACFT CATEGORY	A	B	C	D
VOR/DME (STRAIGHT-IN)	610 (551) / 3.9			
CIRCLING	950 (891)		1800 (1741)	
DME DISTANCE (VMY)	7.3	6	5	4
ALTITUDE (FT)	1800 (1741)	1372 (1313)	1053 (994)	735 (676)
				416 (357)

CHANGES : OBSTACLE HEIGHT