

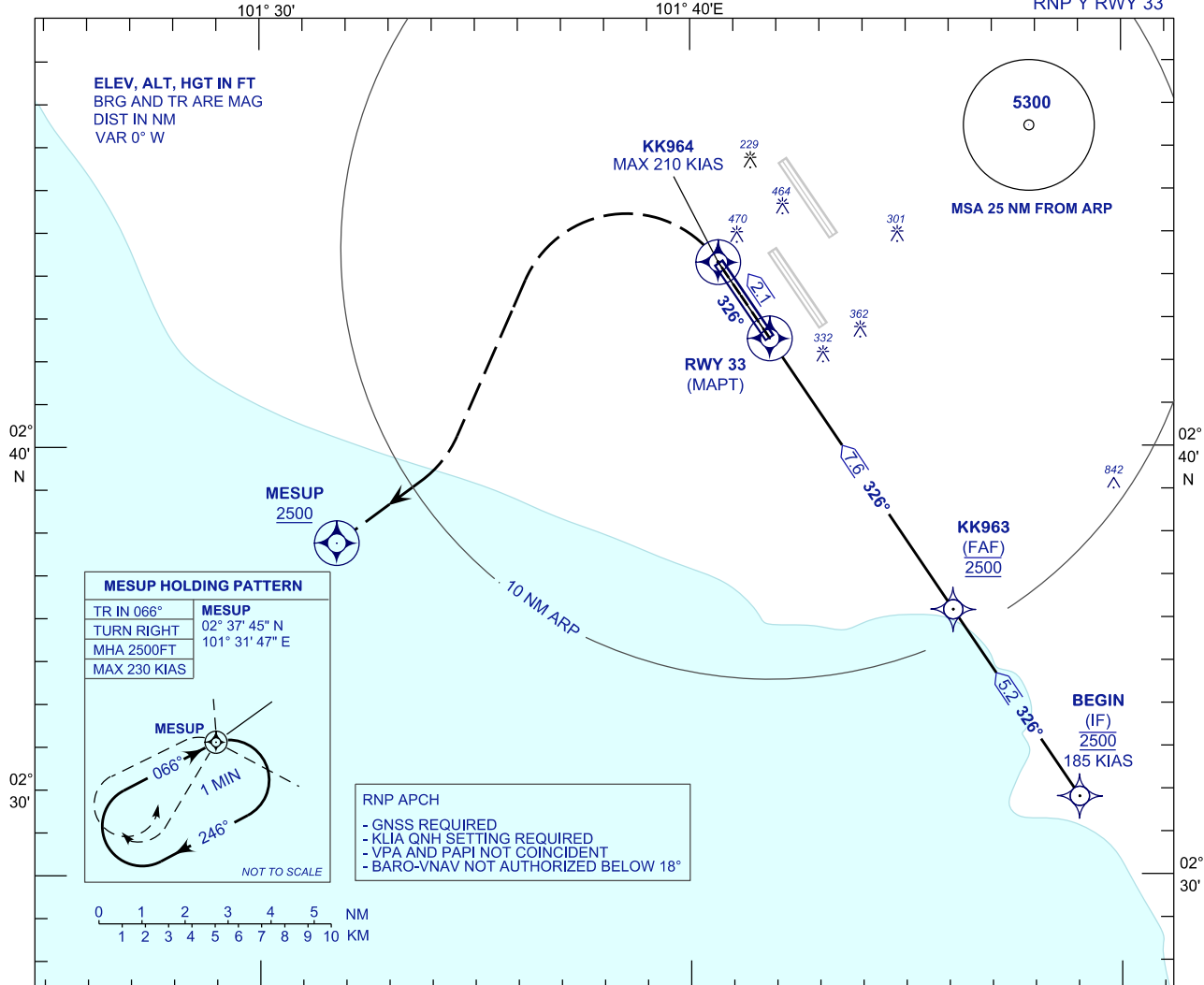
**INSTRUMENT
APPROACH
CHART - ICAO**

AERODROME ELEV 69 FT
HEIGHT RELATED TO
THR RWY 33 - ELEV 28 FT

APP 119.45 125.85 125.10	TWR 119.80	SMC 118.050	ATIS 128.05
-----------------------------------	---------------	----------------	----------------

**SEPANG/KL INTERNATIONAL
AIRPORT (WMKK)**

RNP Y RWY 33



MESUP HOLDING PATTERN

TR IN 066°	MESUP
TURN RIGHT	02° 37' 45" N
MHA 2500FT	101° 31' 47" E
MAX 230 KIAS	

NOT TO SCALE

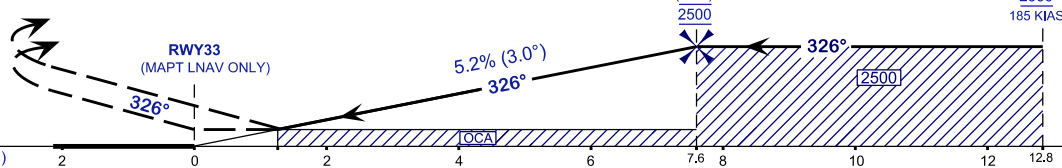
- RNP APCH**
- GNSS REQUIRED
 - KLIA QNH SETTING REQUIRED
 - VPA AND PAPI NOT COINCIDENT
 - BARO-VNAV NOT AUTHORIZED BELOW 18°

VPA 3.0°
TCH 52FT

MISSED APPROACH
AT MAPT MAINTAIN TR326 TO KK964 CLIMB TO 2500FT. AT KK964 TURN LEFT TO MESUP AND HOLD OR AS DIRECTED BY ATC

TRANSITION LEVEL FL130
TRANSITION ALT 11 000

CAUTION
MAX 210 KIAS UNTIL CROSSING KK964



STRAIGHT-IN APPROACH	OCA (OCH)				GROUND SPEED (GS)				KNOTS						
CATEGORY OF AIRCRAFT	A	B	C	D	FAF - RWY33 (7.6 NM)				MIN:SEC						
LNAV / VNAV	500 (472)				RATE OF DESCENT (318.5 FT/NM)				FT/MIN						
LNAV	500 (472)				DIST THR / RWY33		NM	7.6	6.6	5.6	4.6	3.6	2.6	1.6	0.6
		ALTITUDE		FT	2500	2182	1864	1545	1227	909	590	271			