

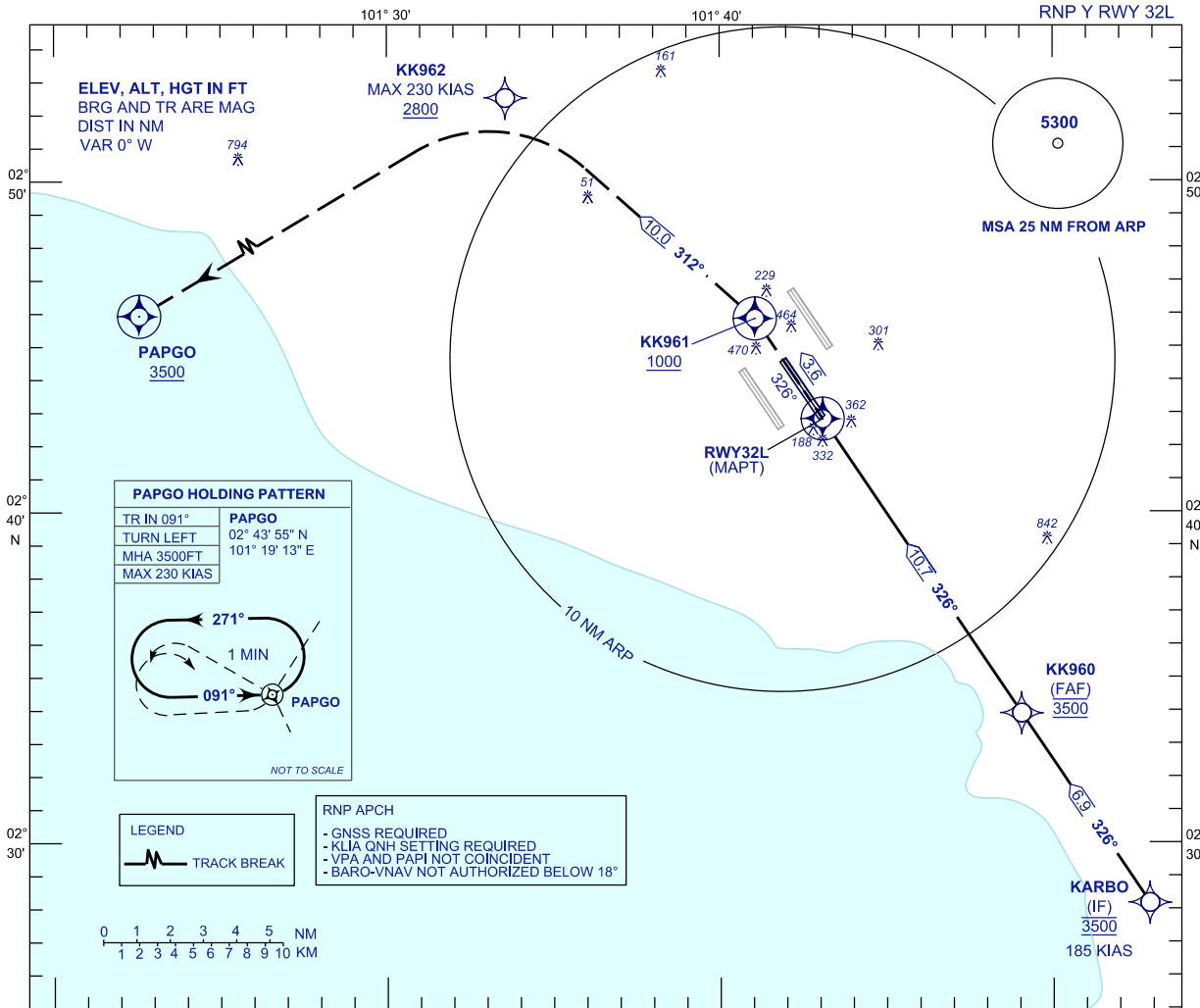
**INSTRUMENT  
APPROACH  
CHART - ICAO**

**AERODROME ELEV 69 FT**  
HEIGHT RELATED TO  
THR RWY 32L - ELEV 48 FT

APP 124.65 118.65 135.75	TWR 118.50	SMC 121.80 122.525	ATIS 128.05
-----------------------------------	---------------	--------------------------	----------------

**SEPANG/KL INTERNATIONAL  
AIRPORT (WMKK)**

RNP Y RWY 32L

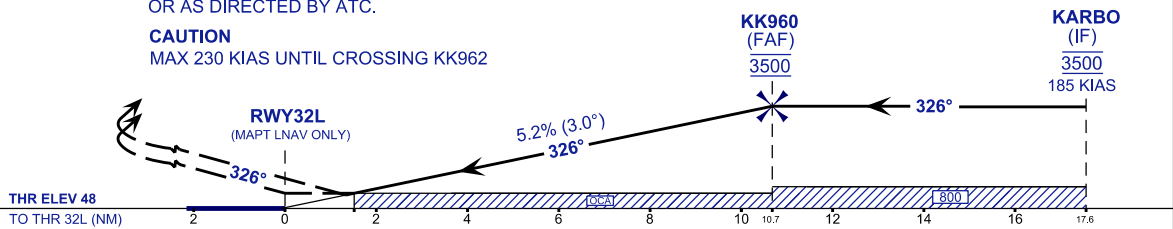


VPA 3.0°  
TCH 52 FT

**MISSED APPROACH**  
AT MAPT, TR326 TO KK961 CLIMB TO 3500FT.  
THEN TR312 TO KK962 THEN TURN LEFT TO PAPGO AND HOLD  
OR AS DIRECTED BY ATC.

**CAUTION**  
MAX 230 KIAS UNTIL CROSSING KK962

TRANSITION LEVEL FL130  
TRANSITION ALT 11 000



STRAIGHT-IN APPROACH	OCA (OCH)				GROUND SPEED (GS)		KNOTS		80	100	120	140	160	180	
CATEGORY OF AIRCRAFT	A	B	C	D	FAF - RWY32L (10.7 NM)		MIN:SEC		8:01	6:25	5:21	4:35	4:01	3:34	
LNAV / VNAV	530 (482)				RATE OF DESCENT (318.5 FT/NM)		FT/MIN		420	530	630	740	840	950	
LNAV	580 (532)				DIST THR / RWY32L		NM	10.7	9.7	8.7	7.7	6.7	5.7	4.7	3.7
	ALTITUDE		FT		3500	3183	2864	2546	2228	1909	1591	1272			
	DIST THR / RWY32L		NM		2.7	1.7	0.7								
	ALTITUDE		FT		954	635	317								