

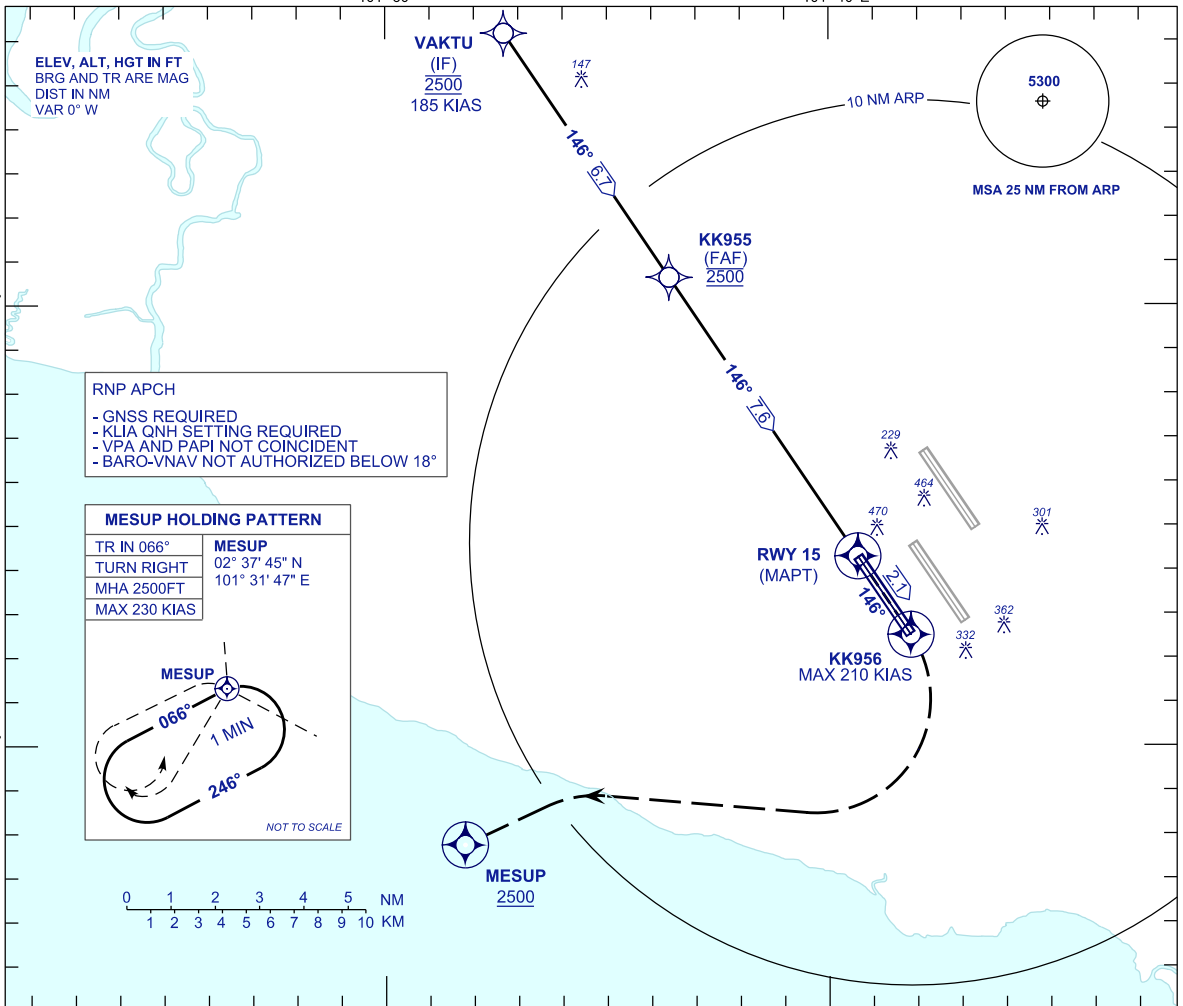
**INSTRUMENT  
APPROACH  
CHART - ICAO**

**AERODROME ELEV 69 FT**  
HEIGHT RELATED TO  
THR RWY 15 - ELEV 28 FT

APP 119.45 124.20 125.10	TWR 119.80	SMC 118.05	ATIS 128.05
-----------------------------------	---------------	---------------	----------------

**SEPANG/KL INTERNATIONAL  
AIRPORT (WMKK)**

RNP Y RWY 15



**RNP APCH**

- GNSS REQUIRED
- KLIA QNH SETTING REQUIRED
- VPA AND PAPI NOT COINCIDENT
- BARO-VNAV NOT AUTHORIZED BELOW 18"

**MESUP HOLDING PATTERN**

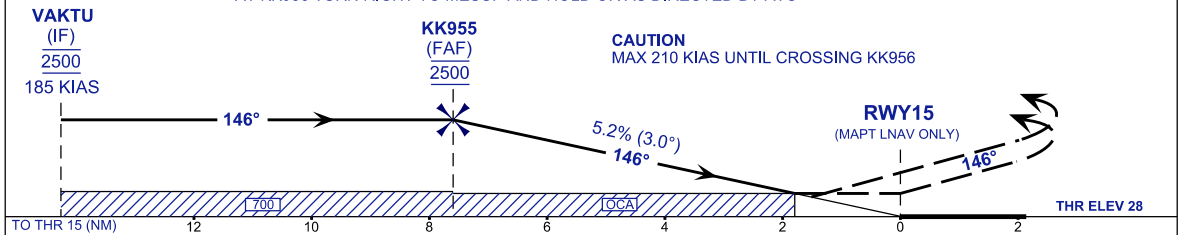
TR IN 066°	MESUP
TURN RIGHT	02° 37' 45" N
MHA 2500FT	101° 31' 47" E
MAX 230 KIAS	

NOT TO SCALE

VPA 3.0°  
TCH 52 FT

**MISSED APPROACH**  
AT MAPT MAINTAIN TR146 TO KK956 CLIMB TO 2500FT.  
AT KK956 TURN RIGHT TO MESUP AND HOLD OR AS DIRECTED BY ATC

TRANSITION LEVEL FL130  
TRANSITION ALT 11 000



STRAIGHT - IN APPROACH	OCA (OCH)				GROUND SPEED (GS)		KNOTS		80	100	120	140	160	180	
CATEGORY OF AIRCRAFT	A	B	C	D	FAF - RWY15 (7.6 NM)		MIN:SEC		5:42	4:34	3:48	3:16	2:51	2:32	
LNAV / VNAV	560 (532)				RATE OF DESCENT (318.5 FT/NM)		FT/MIN		420	530	630	740	840	950	
LNAV	650 (622)				DIST THR / RWY15		NM	7.6	6.6	5.6	4.6	3.6	2.6	1.6	0.6
	ALTITUDE		FT		2500	2182	1864	1545	1227	909	590				

**CHANGES : RENAMING CHART IDENTIFICATION**