

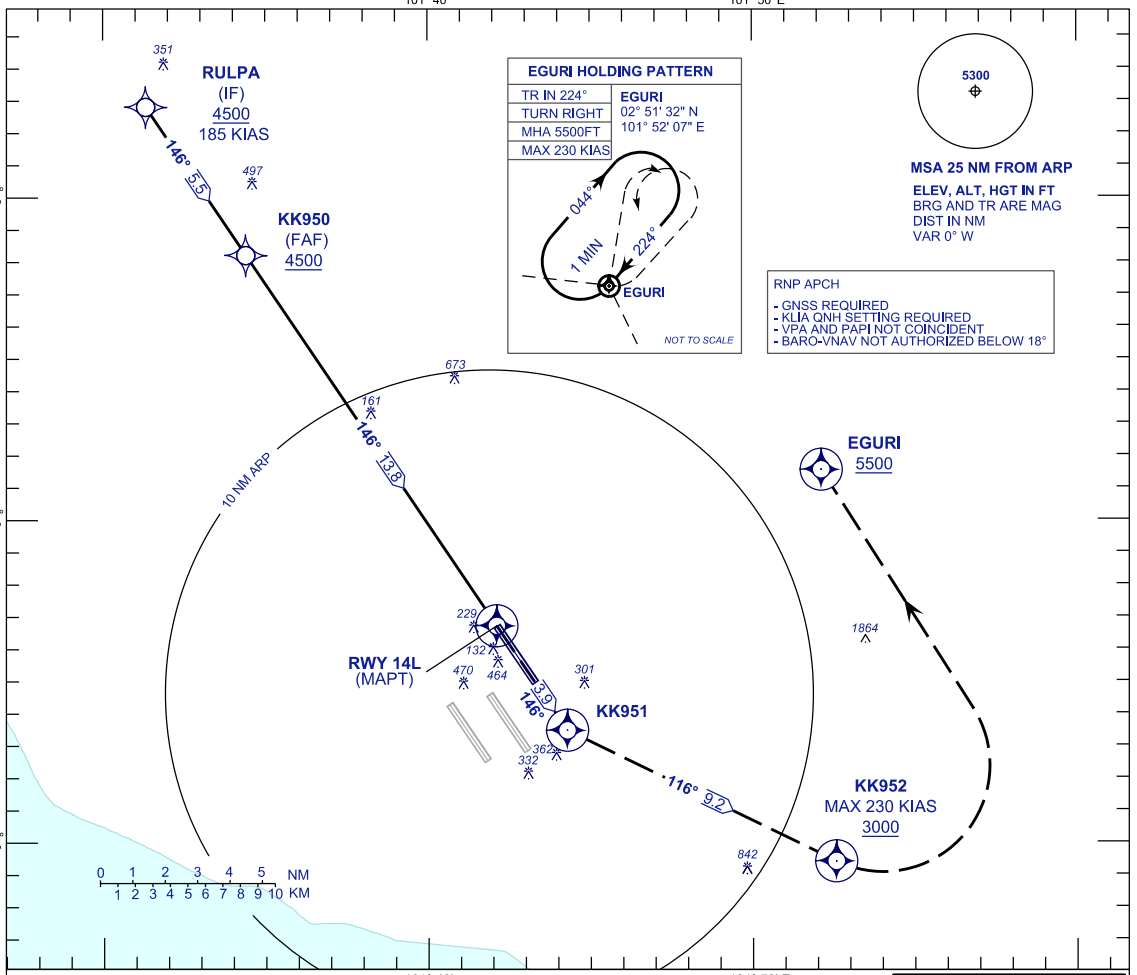
**INSTRUMENT  
APPROACH  
CHART - ICAO**

**AERODROME ELEV 69 FT**  
HEIGHT RELATED TO  
THR RWY 14L - ELEV 54 FT

APP 118.65 120.35 135.75	TWR 118.80	SMC 121.65	ATIS 128.05
-----------------------------------	---------------	---------------	----------------

**SEPANG/KL INTERNATIONAL  
AIRPORT (WMKK)**

RNP Y RWY 14L



**EGURI HOLDING PATTERN**

TR IN 224°	EGURI
TURN RIGHT	02° 51' 32" N
MHA 5500FT	101° 52' 07" E
MAX 230 KIAS	

1 MIN

NOT TO SCALE

5300

**MSA 25 NM FROM ARP**  
ELEV, ALT, HGT IN FT  
BRG AND TR ARE MAG  
DIST IN NM  
VAR 0° W

RNP APCH

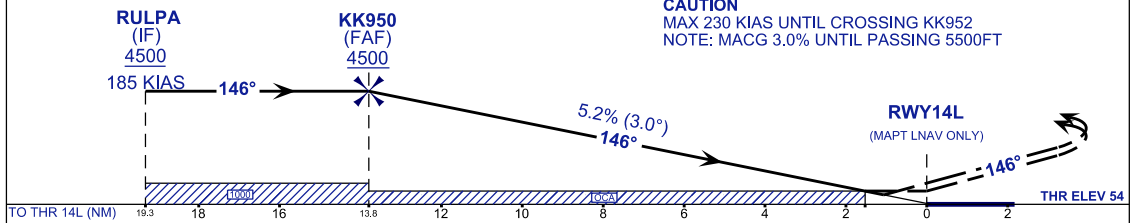
- GNSS REQUIRED
- KLA QNH SETTING REQUIRED
- VPA AND PAPI NOT COINCIDENT
- BARO-VNAV NOT AUTHORIZED BELOW 18°

VPA 3.0°  
TCH 52 FT

**MISSED APPROACH**  
AT MAPT, TR146 TO KK951 CLIMB TO 5500FT.  
INTERCEPT TR116 TO KK952. THEN TURN LEFT  
TO EGURI AND HOLD OR AS DIRECTED BY ATC

TRANSITION LEVEL FL130  
TRANSITION ALT 11 000

**CAUTION**  
MAX 230 KIAS UNTIL CROSSING KK952  
NOTE: MACG 3.0% UNTIL PASSING 5500FT



STRAIGHT - IN APPROACH	OCA (OCH)				GROUND SPEED (GS)	KNOTS	80	100	120	140	160	180				
	A	B	C	D			MIN:SEC	10:21	8:17	6:54	5:55	5:11	4:36			
CATEGORY OF AIRCRAFT					FAF - RWY14L (13.8 NM)	FT/MIN		420	530	630	740	840	950			
					RATE OF DESCENT (318.5 FT/NM)											
LNAV / VNAV	3.0% MACG <sup>Ⓞ</sup>				440 (386)	DIST THR / RWY14L		NM	13.8	12.8	11.8	10.8	9.8	8.8	7.8	6.8
	2.5% MACG				840 (786)											
LNAV	3.0% MACG <sup>Ⓞ</sup>				590 (536)	ALTITUDE		FT	4500	4180	3862	3543	3225	2906	2588	2270
	2.5% MACG				1100 (1046)	DIST THR / RWY14L		NM	5.8	4.8	3.8	2.8	1.8	0.8		
					ALTITUDE		FT	1951	1633	1314	996	677	359			

MACG - MISSED APPROACH CLIMB GRADIENT  
Ⓞ IF UNABLE TO MAINTAIN A 3.0% MACG, USE LNAV OR  
LNAV / VNAV 2.5% OCA