

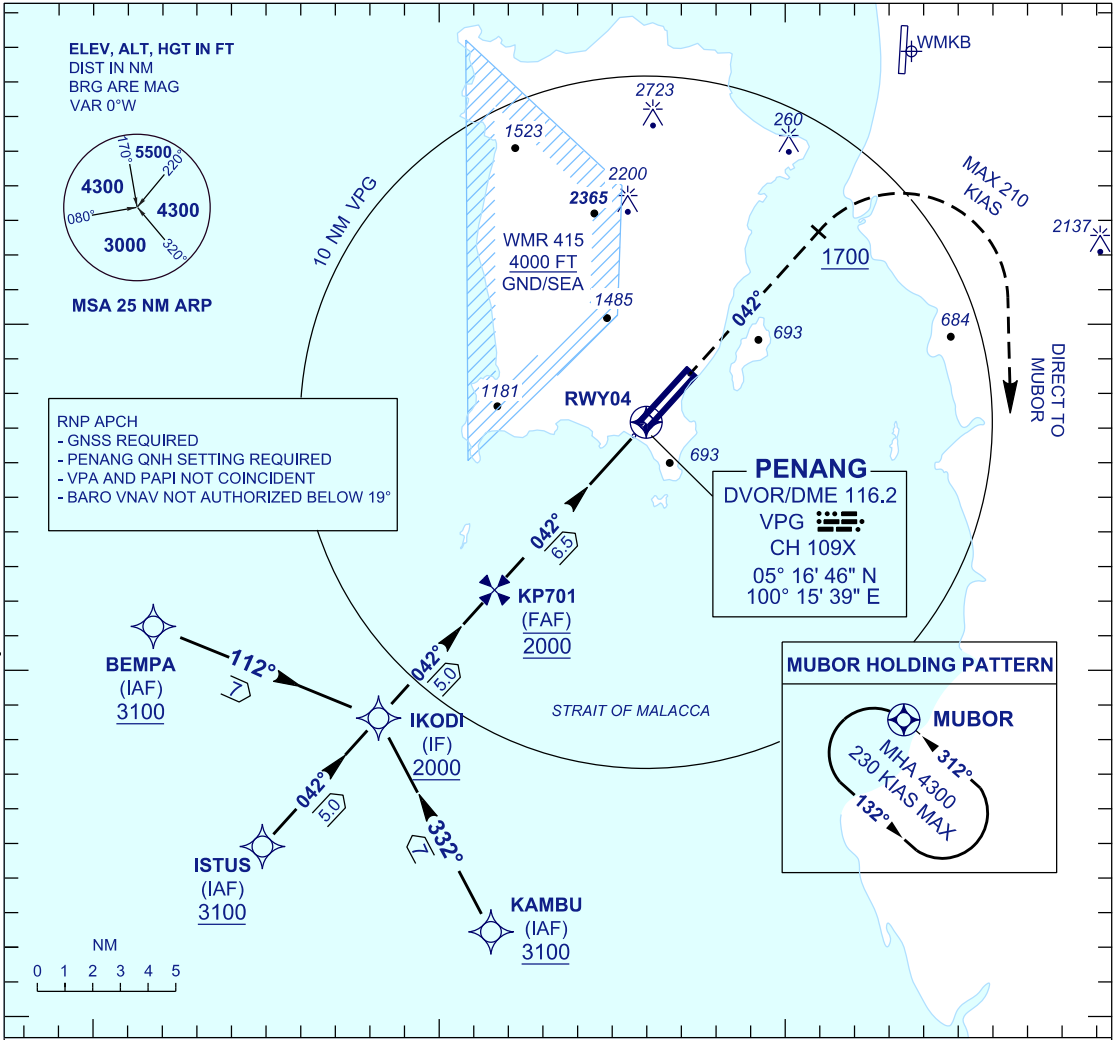
**INSTRUMENT
APPROACH
CHART - ICAO**

AERODROME ELEV 10 FT
HEIGHTS RELATED TO
THR RWY 04 - ELEV 9 FT

APP 125.925
TWR 121.1
SMC 121.6, 121.9
ATIS 126.4

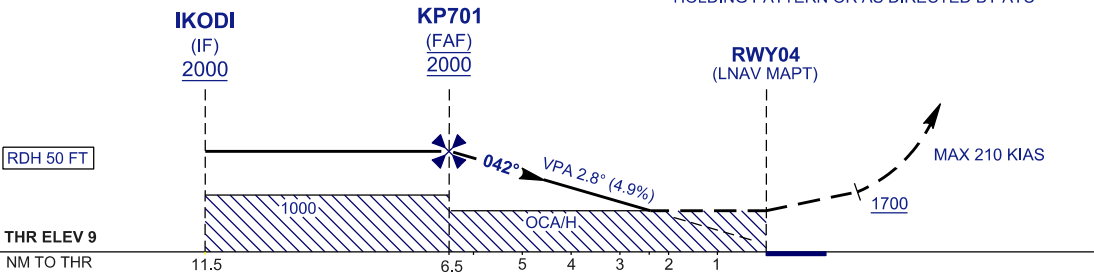
**PENANG/PENANG
INTERNATIONAL AIRPORT (WMKP)**

RNP Y RWY 04



TRANSITION LEVEL FL 130
TRANSITION ALT 11000

MISSED APPROACH
CLIMB ON TR 042° TO 4300 FT. ON PASSING
1700 FT TURN RIGHT DIRECT TO MUBOR
HOLDING PATTERN OR AS DIRECTED BY ATC



		OCA/H			
STRAIGHT IN APPROACH	ACFT CAT.	A	B	C	D
	LNAV	830 (821)			
	LNAV/VNAV	740 (731)			
CIRCLING		1030 (1021)	1470 (1461)	1560 (1551)	1560 (1551)

GROUND SPEED - KT	80	100	120	140	160	180
RATE OF DESCENT (2.8°) (FT/MIN)	400	500	600	710	810	910

DISTANCE TO THRESHOLD (NM)	6.5	5	4	3	2
ALTITUDE (FT)	2000	1550	1250	950	660

* CIRCLING PROHIBITED IN SECTOR 250° - 020° FROM RWY 04