

**STANDARD DEPARTURE CHART
INSTRUMENT (SID) - ICAO**

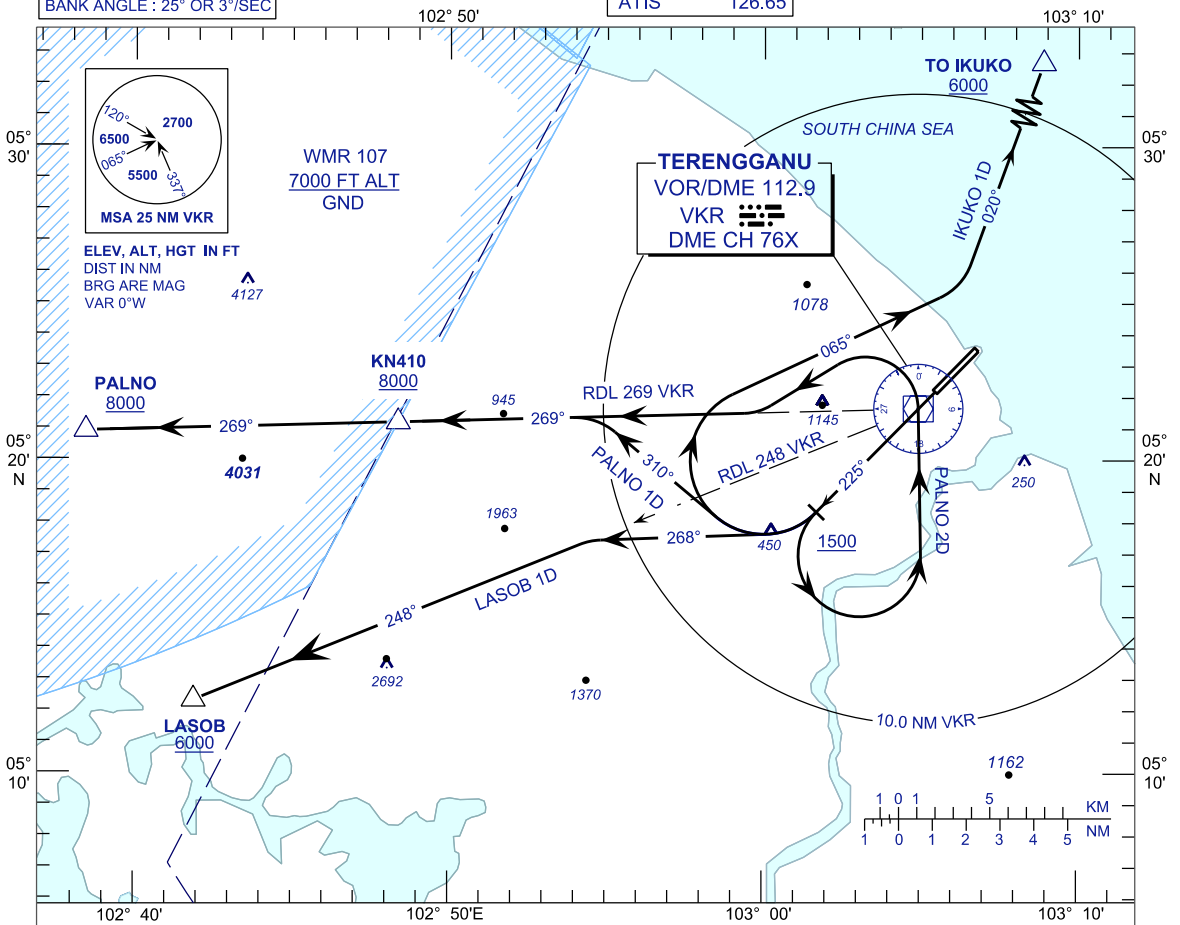
APP 123.6
235.32
121.5
TWR 119.05
SMC 121.6
ATIS 126.65

**KUALA TERENGGANU/
SULTAN MAHMUD (WMKN)
RWY 22**

TRANSITION ALTITUDE
11 000 FT

PALNO 1D LASOB 1D IKUKO 1D
PALNO 2D

BANK ANGLE : 25° OR 3°/SEC



INITIAL CLIMB PROCEDURE	DESIGNATOR	SID DESCRIPTION
TRACK 225° AT OR ABOVE 1500 FT THEN TURN RIGHT NOTE: MINIMUM CLIMB GRADIENT 4.5%	IKUKO 1D	TRACK 065° TO INTERCEPT RDL020 VKR VOR OUTBOUND TO IKUKO THEN R208 NOTE: MINIMUM CLIMB GRADIENT 4.5% UNTIL COMPLETE TURN
	PALNO 1D	TRACK 310° TO INTERCEPT RDL269 VKR VOR OUTBOUND TO PALNO THEN M751/W540 (NORTHBOUND) NOTE: MINIMUM CLIMB GRADIENT 4.5% UNTIL PALNO
	LASOB 1D	TRACK 268° TO INTERCEPT RDL248 VKR VOR OUTBOUND TO LASOB THEN Y346 (SOUTHBOUND) NOTE: MINIMUM CLIMB GRADIENT 4.0% UNTIL LASOB
TRACK 225° AT OR ABOVE 1500 FT THEN TURN LEFT NOTE: MINIMUM CLIMB GRADIENT 4.5%	PALNO 2D NOTE: TO BE USED DURING WMR107 ACTIVE	DIRECT TO VKR THEN CONTINUE ON RDL269 VKR VOR OUTBOUND TO KN410 AT 8000 FT OR ABOVE. AFTER THAT DIRECT TO PALNO THEN M751/W540 (NORTHBOUND) NOTE: MINIMUM CLIMB GRADIENT 4.5% UNTIL 5000FT

RATE OF CLIMB (FT/MIN)							
GND SPEED - KT	120	150	180	210	240	270	
GRADIENT	3.3%	401	501	602	702	802	902
	4.0%	486	608	729	851	972	1094
	4.5%	547	684	820	957	1094	1230