

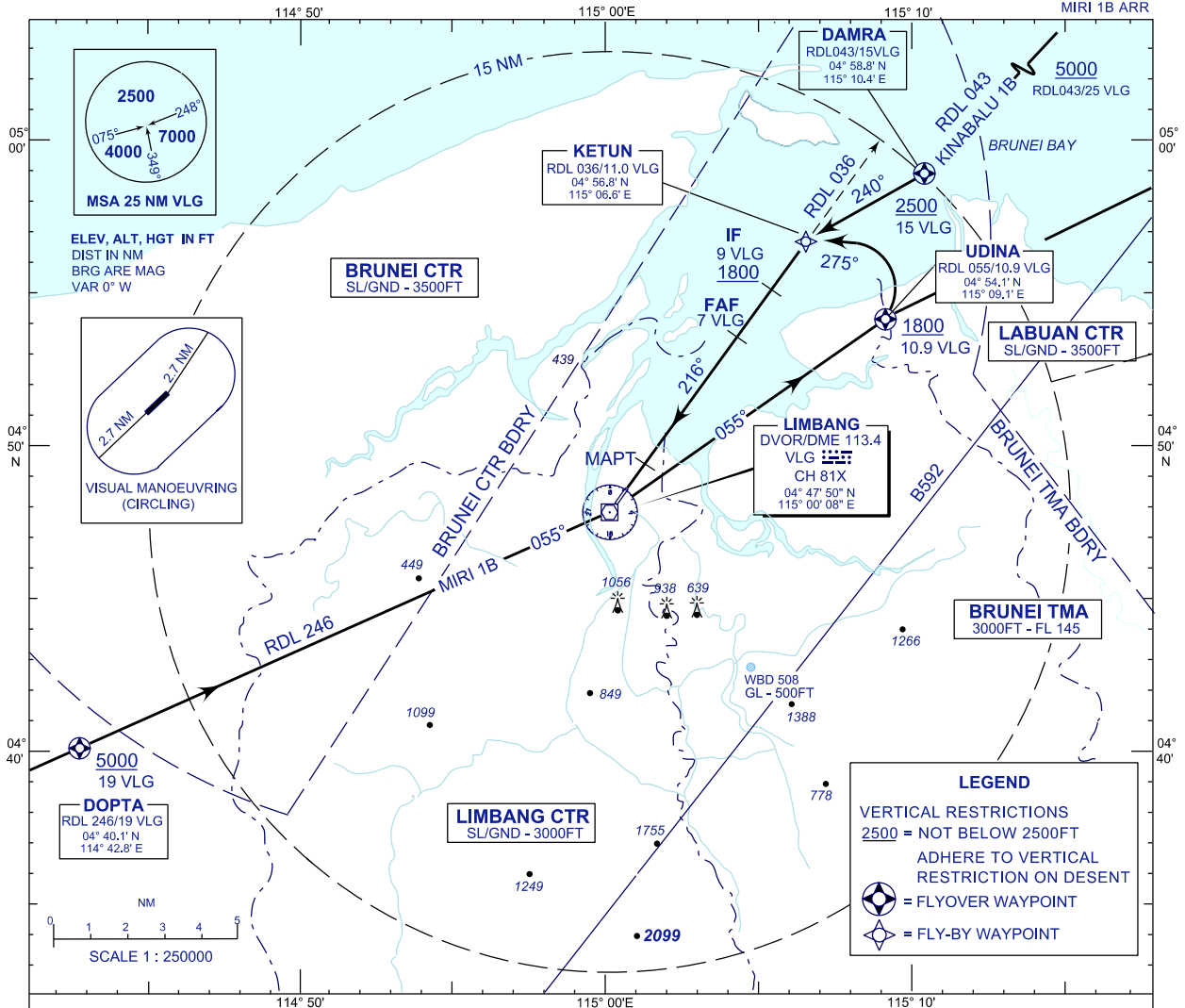
**STANDARD ARRIVAL CHART
INSTRUMENT (STAR) - ICAO**

TRANSITION ALTITUDE
11000FT

TWR 124.30
SMC 121.95
EMERG 121.50

**LIMBANG/LIMBANG(WBGJ)
RWY 22**

RNAV TRACKING
KINABALU 1B ARR
MIRI 1B ARR



RWY 22

KINABALU ONE BRAVO ARRIVAL

FROM DAMRA RDL 043/15 DME VLG VOR INBOUND

- * TRACK 240° TO KETUN
- * TO INTERCEPT RDL 036 FOR VOR/DME APPROACH

MIRI ONE BRAVO ARRIVAL

FROM DOPTA RDL 246/19 DME VLG VOR INBOUND

- * TRACK 066° TO VLG, THENCE TRACK 055° TO UNIDA
- * AT UNIDA TURN LEFT TRACK 275° TO KETUN
- * To INTERCEPT RDL 036 FOR VOR/DME APPROACH

CHANGES : FREQ 118.500 (SRY) PERMANENTLY WITHDRAWN