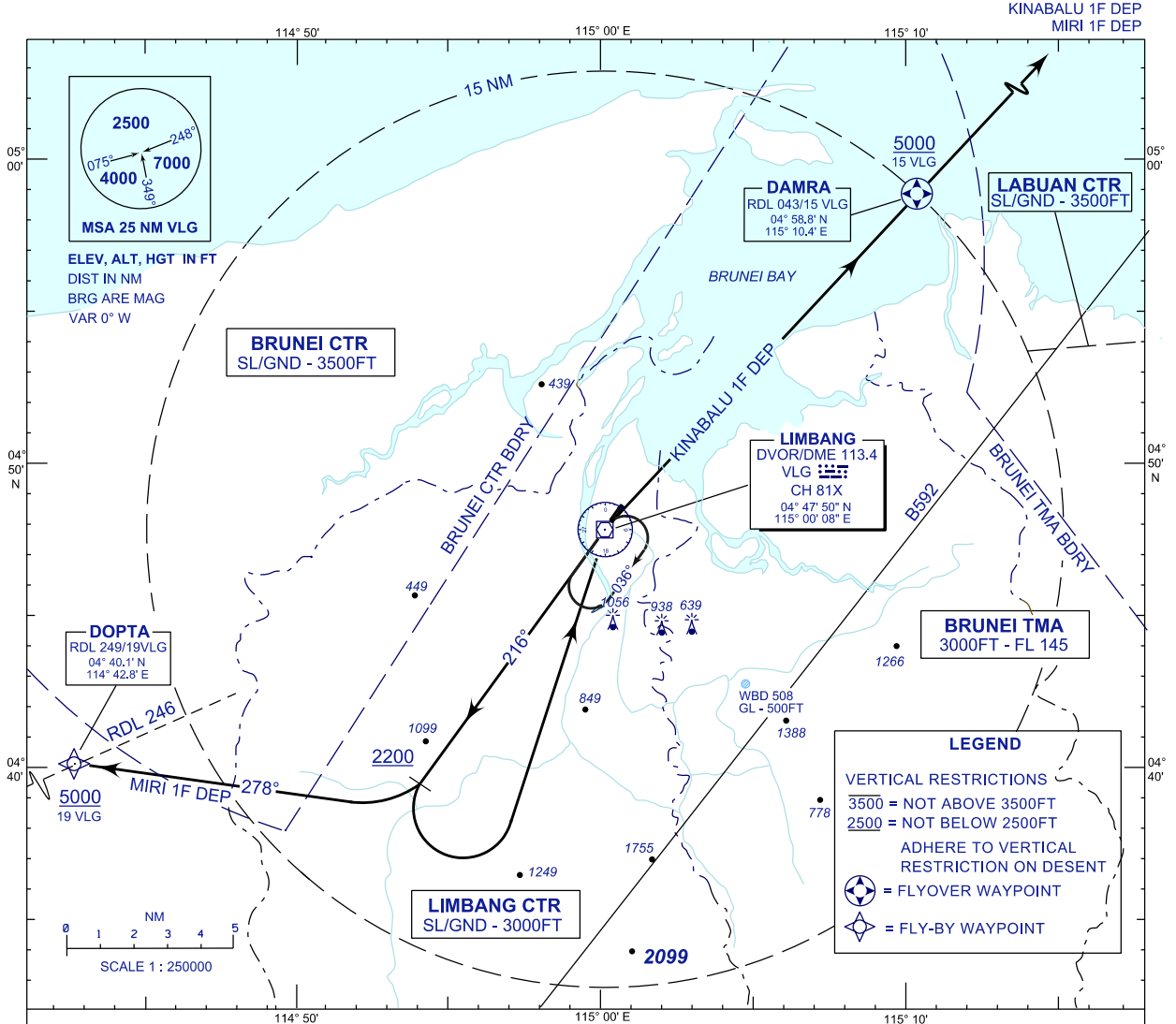


**STANDARD DEPARTURE CHART  
INSTRUMENT (SID) - ICAO**

TRANSITION ALTITUDE  
11000FT

TWR 124.30  
SMC 121.95  
EMERG 121.50

**LIMBANG/LIMBANG(WBGJ)  
RWY 22**



**RWY 04**

- \* CLIMB ON TRACK 216°
- \* AT 2200 FT OR ABOVE

**FOR KINABALU 1F DEPARTURE**

- \* TURN LEFT, TRACK TO VLG VOR
- \* THENCE TRACK ON RDL 043 TO DAMRA RDL 043/15 DME VLG VOR OUTBOUND

**FOR MIRI 1F DEPARTURE**

- \* TURN RIGHT, TRACK 278° TO DOPTA RDL 246/19 DME VLG VOR OUTBOUND