

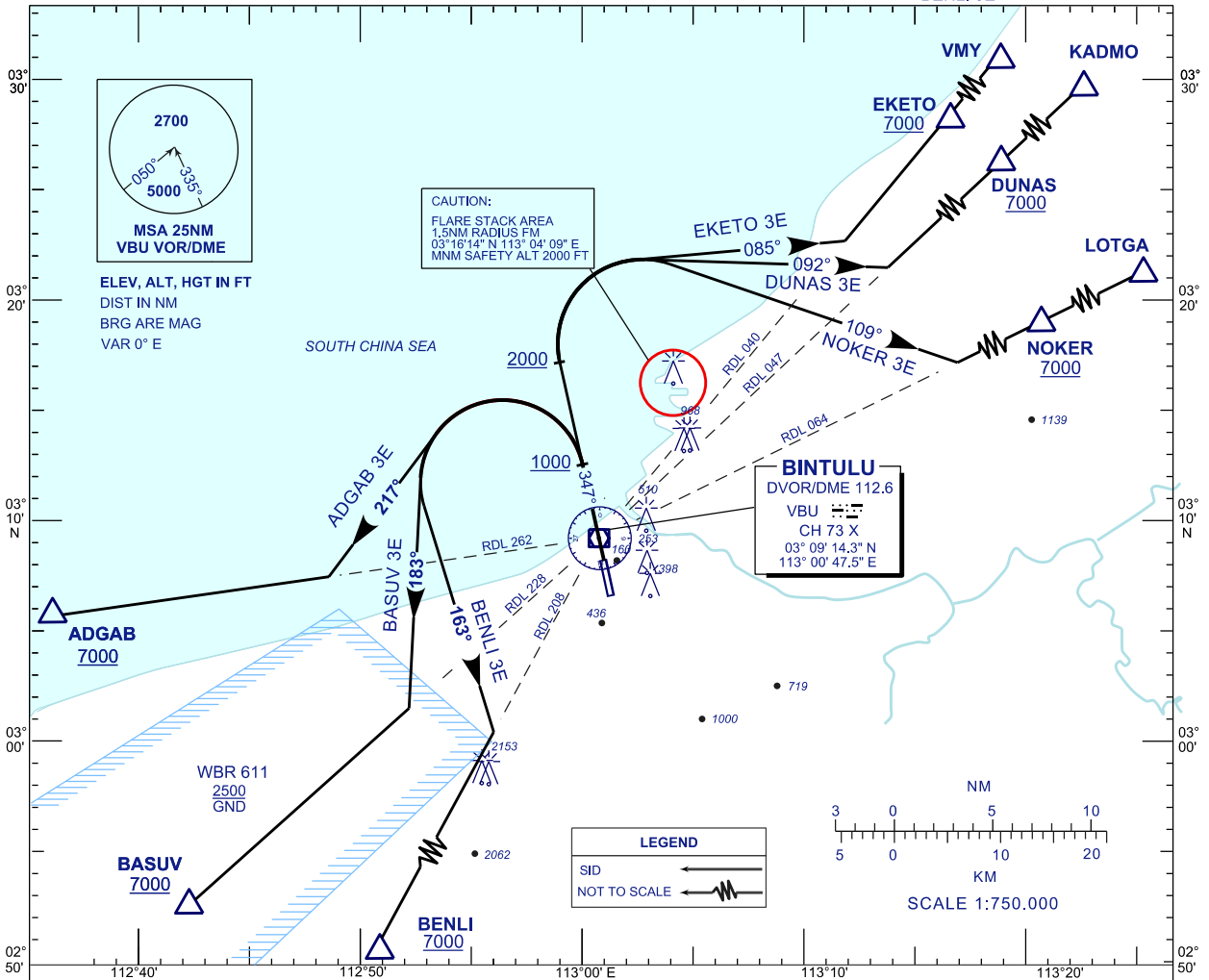
STANDARD DEPARTURE CHART INSTRUMENT (SID) - ICAO

BINTULU/BINTULU (WBGB) DEPARTURES RWY 35

TWR/APP 122.3 (P)
119.25 (S)
121.5
SMC 121.8
ATIS 127.8

TRANSITION ALTITUDE
11,000 FT

ADGAB 3E
BASUV 3E
BENLI 3E
EKETO 3E
DUNAS 3E
NOKER 3E



CLIMB GRADIENT		GROUND SPEED (KT)				
		150	180	210	240	270
3.3%	FT/NM	501	601	702	802	902
3.5%		532	638	744	851	957

COMMUNICATION FAILURE :

SQUAWK 7600

- IF UNDER PILOT NAVIGATION, MAINTAIN LAST ASSIGNED LEVEL FOR 3 MINUTES, IF NO ONWARD CLEARANCE IS RECEIVED. SUBSEQUENTLY CLIMB TO COMPLY WITH SID.
- IF UNDER RADAR VECTORED : MAINTAIN VECTOR FOR 2 MINUTES, IF BELOW MSA, CLIMB TO MSA, THEN TRACK TO INTERCEPT CLEARED OR PREVIOUSLY ASSIGNED SID TO DESTINATION.

CHANGES : CHANGES MIRI VMI TO VMY.