

**ATC SURVEILLANCE MINIMUM
ALTITUDE CHART - ICAO**

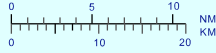
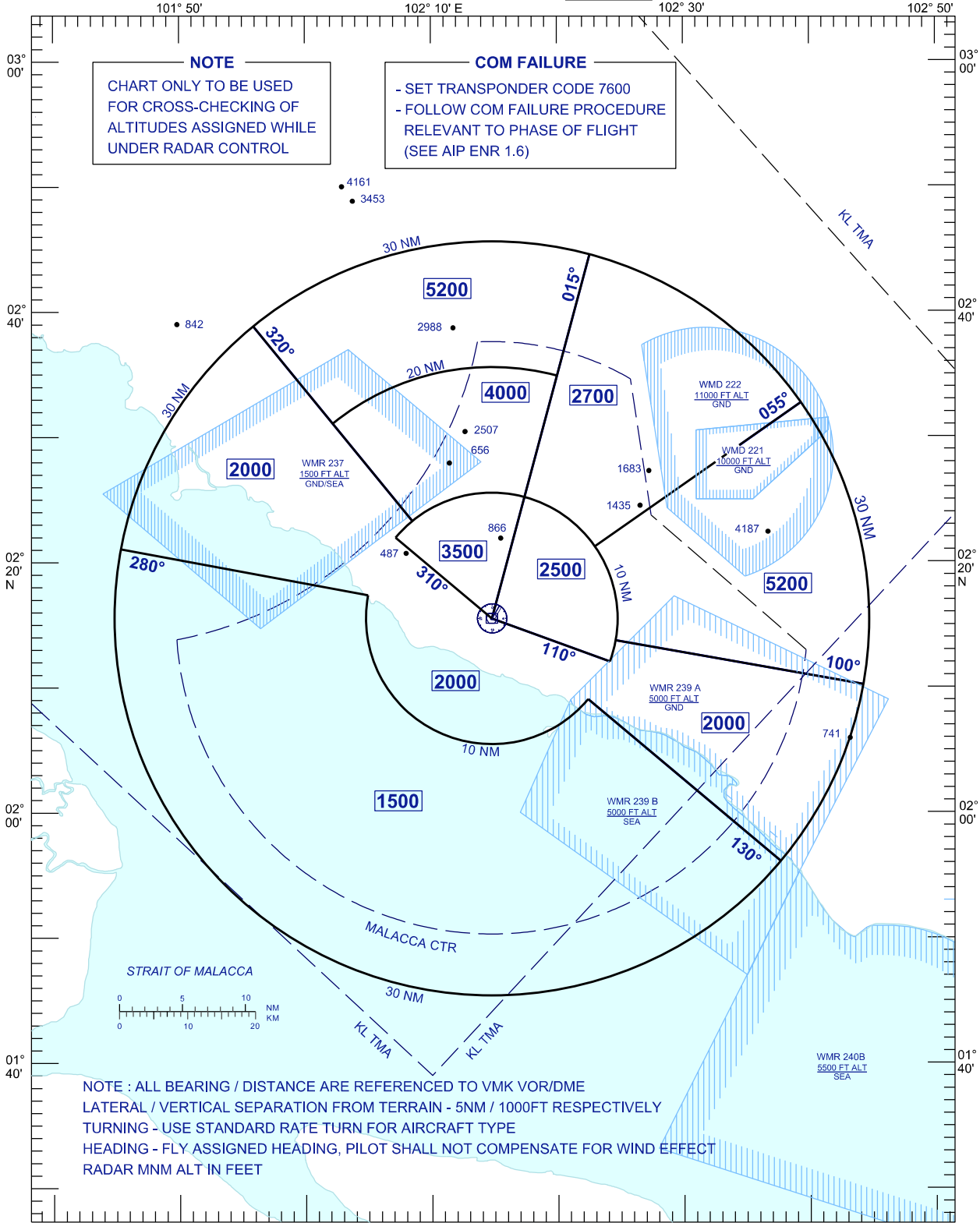
**AERODROME ELEVATION 40 FT
TRANSITION ALT 11 000 FT**

TWR	118.00
SMC	121.60
ATIS	127.45

MALACCA/MALACCA (WMKM)

NOTE
CHART ONLY TO BE USED
FOR CROSS-CHECKING OF
ALTITUDES ASSIGNED WHILE
UNDER RADAR CONTROL

COM FAILURE
- SET TRANSPONDER CODE 7600
- FOLLOW COM FAILURE PROCEDURE
RELEVANT TO PHASE OF FLIGHT
(SEE AIP ENR 1.6)



**NOTE : ALL BEARING / DISTANCE ARE REFERENCED TO VMK VOR/DME
LATERAL / VERTICAL SEPARATION FROM TERRAIN - 5NM / 1000FT RESPECTIVELY
TURNING - USE STANDARD RATE TURN FOR AIRCRAFT TYPE
HEADING - FLY ASSIGNED HEADING, PILOT SHALL NOT COMPENSATE FOR WIND EFFECT
RADAR MNM ALT IN FEET**