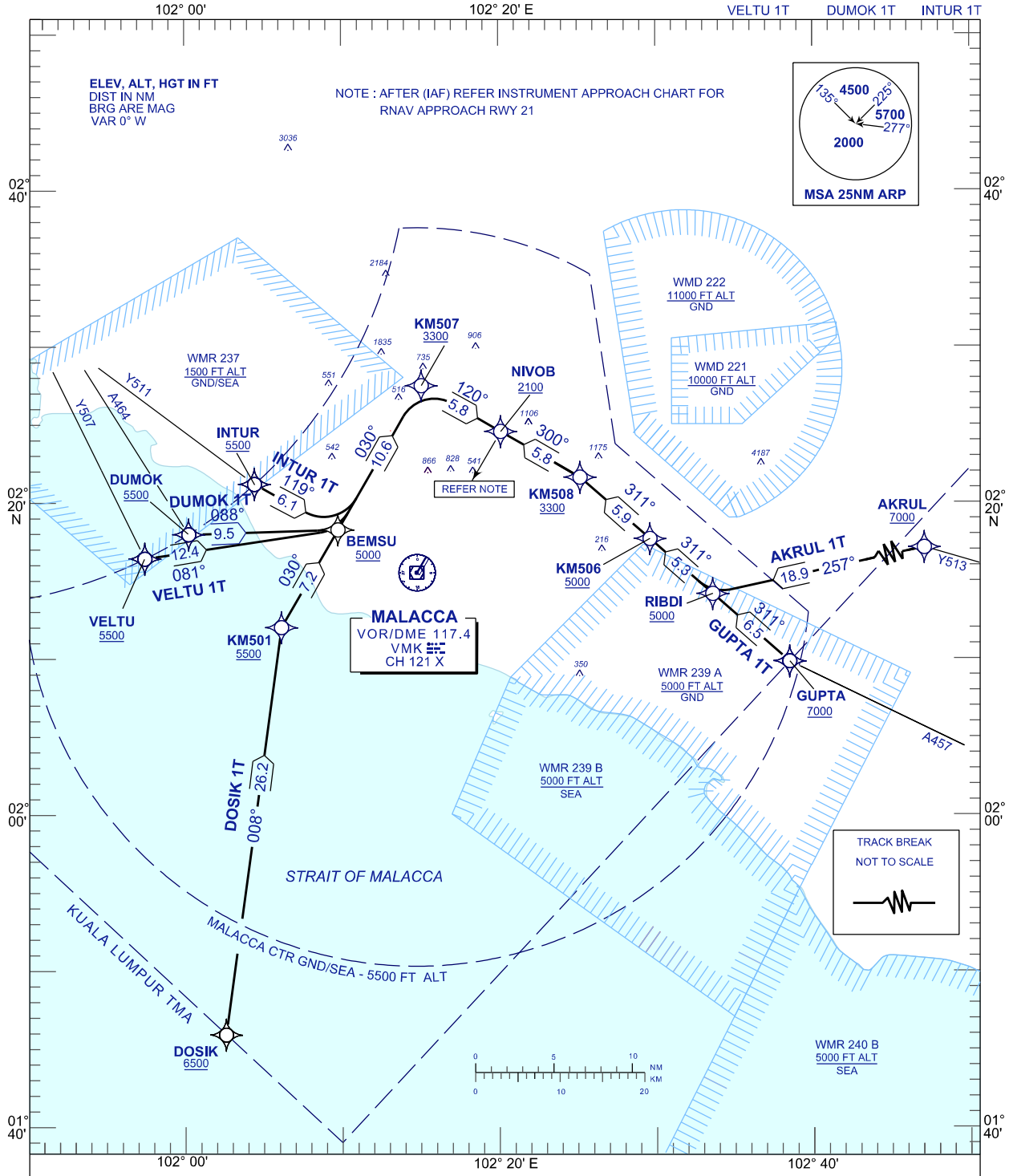


STANDARD ARRIVAL CHART INSTRUMENT (STAR) - ICAO

TRANSITION ALTITUDE 11 000 FT	TWR 118.00
	SMC 121.60
	ATIS 127.45

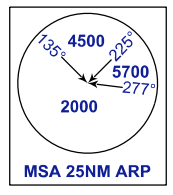
MALACCA/MALACCA (WMKM) RNAV (GNSS) RWY21

AKRUL 1T	GUPTA 1T	DOSIK 1T
VELTU 1T	DUMOK 1T	INTUR 1T



ELEV, ALT, HGT IN FT
DIST IN NM
BRG ARE MAG
VAR 0° W

NOTE : AFTER (IAF) REFER INSTRUMENT APPROACH CHART FOR
RNAV APPROACH RWY 21



MALACCA
VOR/DME 117.4
VMK
CH 121 X

TRACK BREAK
NOT TO SCALE

COMMUNICATION FAILURE :

- SQUAWK 7600
- IF UNDER PILOT NAVIGATION, MAINTAIN LAST ASSIGNED LEVEL FOR 3 MINUTES, IF NO ONWARD CLEARANCE IS RECEIVED. SUBSEQUENTLY CLIMB/DESCEND TO COMPLY WITH STAR AND LAND.
- IF UNDER RADAR VECTORING : MAINTAIN VECTOR FOR 1 MINUTES, IF BELOW MSA, CLIMB TO MSA, THEN TRACK TO INTERCEPT CLEARED OR PREVIOUSLY ASSIGNED STAR AND LAND.