

**STANDARD ARRIVAL CHART  
INSTRUMENT (STAR) - ICAO**

TRANSITION ALTITUDE  
11 000 FT

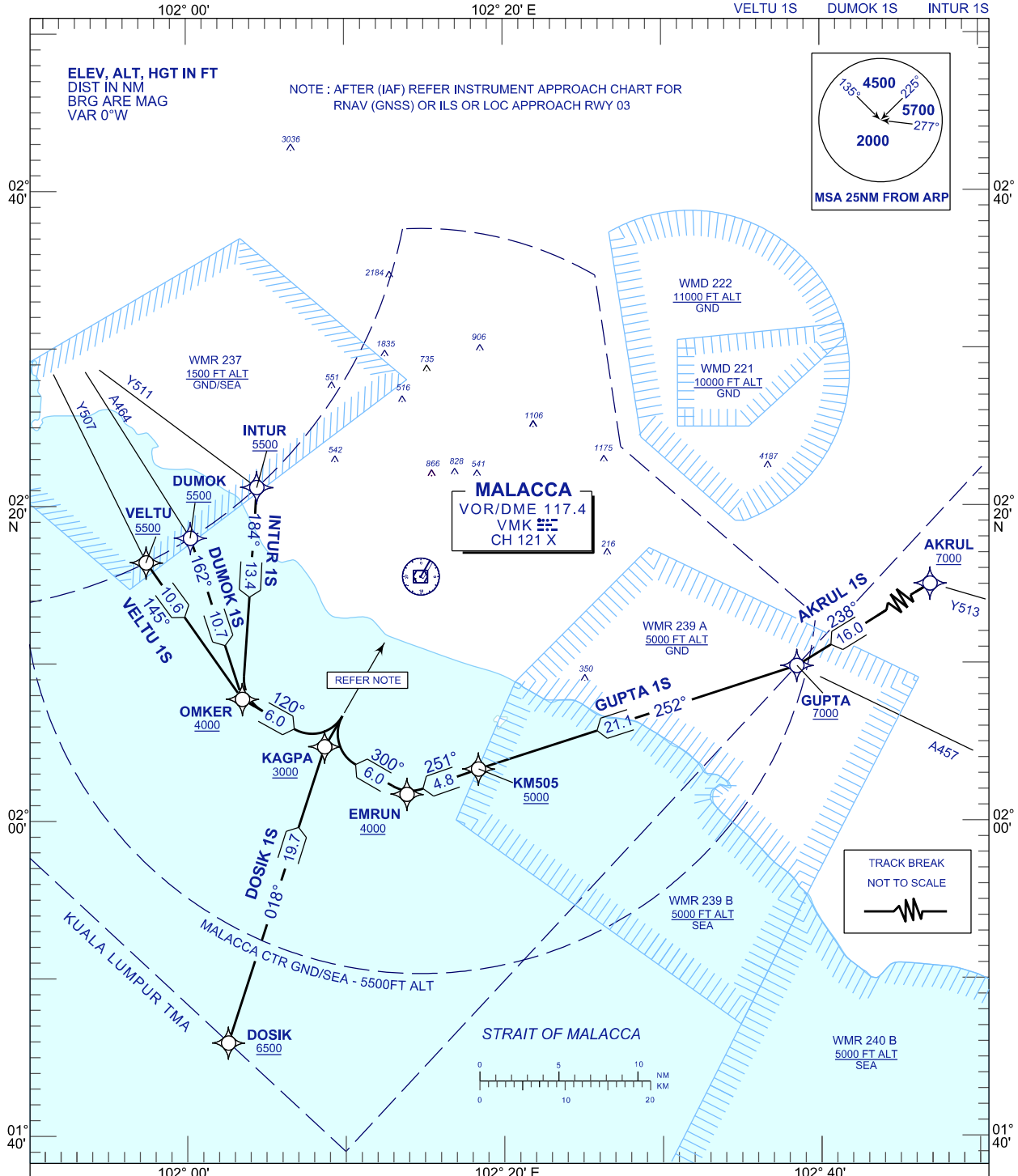
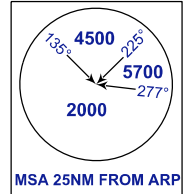
TWR 118.00  
SMC 121.60  
ATIS 127.45

**MALACCA/MALACCA (WMKM)  
RNAV (GNSS) RWY03**

AKRUL 1S GUPTA 1S DOSIK 1S  
VELTU 1S DUMOK 1S INTUR 1S

ELEV. ALT, HGT IN FT  
DIST IN NM  
BRG ARE MAG  
VAR 0°W

NOTE : AFTER (IAF) REFER INSTRUMENT APPROACH CHART FOR  
RNAV (GNSS) OR ILS OR LOC APPROACH RWY 03



**COMMUNICATION FAILURE :**

SQUAWK 7600

- IF UNDER PILOT NAVIGATION, MAINTAIN LAST ASSIGNED LEVEL FOR 3 MINUTES, IF NO ONWARD CLEARANCE IS RECEIVED. SUBSEQUENTLY CLIMB/DESCEND TO COMPLY WITH STAR AND LAND.
- IF UNDER RADAR VECTORED : MAINTAIN VECTOR FOR 1 MINUTES, IF BELOW MSA, CLIMB TO MSA, THEN TRACK TO INTERCEPT CLEARED OR PREVIOUSLY ASSIGNED STAR AND LAND.