

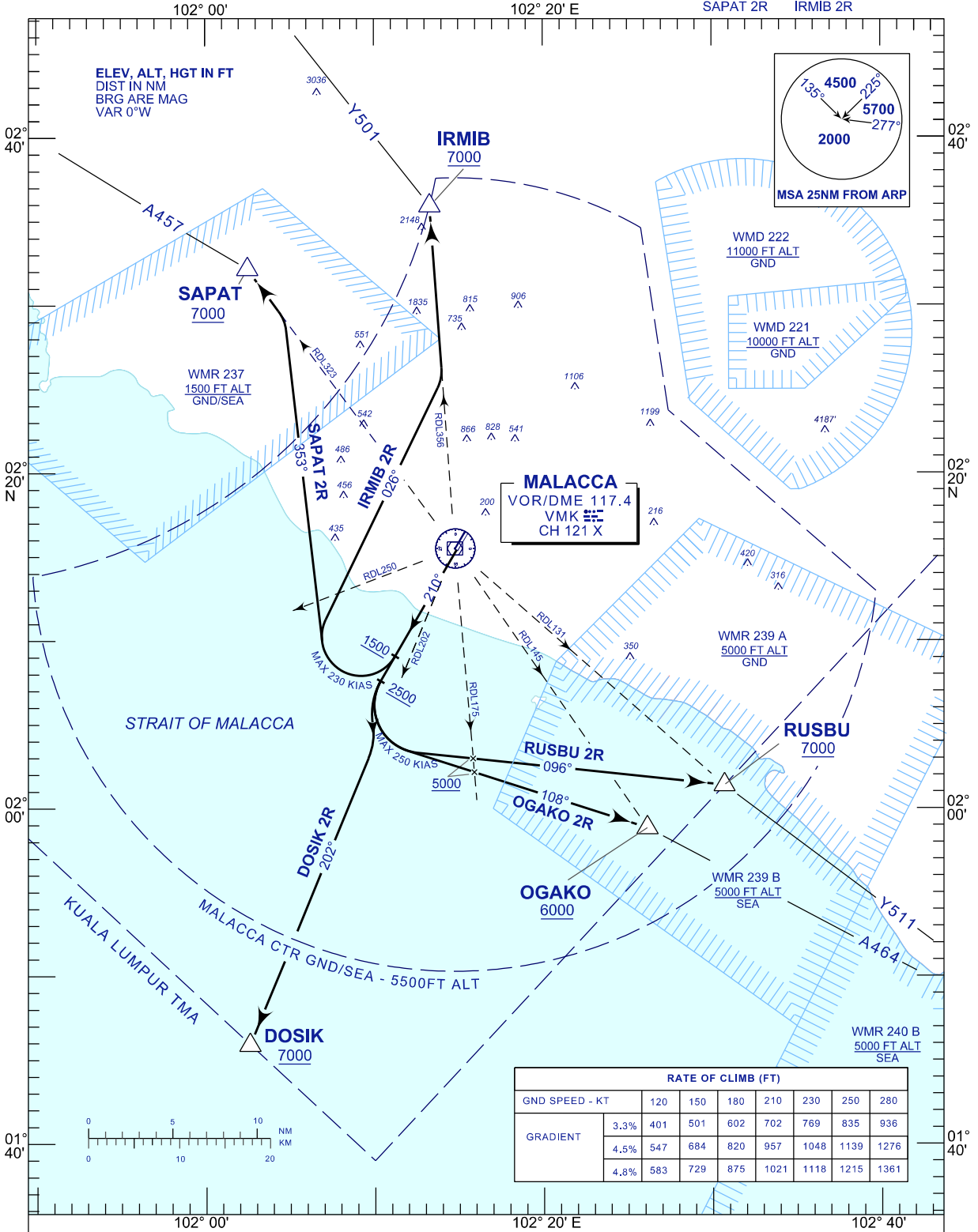
**STANDARD DEPARTURE CHART  
INSTRUMENT (SID) - ICAO**

TRANSITION ALTITUDE  
11 000 FT

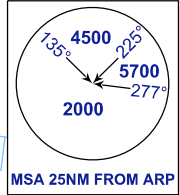
TWR 118.00  
SMC 121.60  
ATIS 127.45

**MALACCA/MALACCA (WMKM)  
RWY 12**

RUSBU 2R OGAKO 2R DOSIK 2R  
SAPAT 2R IRMIB 2R



ELEV, ALT, HGT IN FT  
DIST IN NM  
BRG ARE MAG  
VAR 0°W



**MALACCA**  
VOR/DME 117.4  
VMK  
CH 121 X

RATE OF CLIMB (FT)								
GND SPEED - KT	120	150	180	210	230	250	280	
GRADIENT	3.3%	401	501	602	702	769	835	936
	4.5%	547	684	820	957	1048	1139	1276
	4.8%	583	729	875	1021	1118	1215	1361

**COMMUNICATION FAILURE :**

- SQUAWK 7600
- IF UNDER PILOT NAVIGATION, MAINTAIN LAST ASSIGNED LEVEL FOR 3 MINUTES, IF NO ONWARD CLEARANCE IS RECEIVED, SUBSEQUENTLY CLIMB TO COMPLY WITH SID.
- IF UNDER RADAR VECTORED : MAINTAIN VECTOR FOR 2 MINUTES, IF BELOW MSA, CLIMB TO MSA, THEN TRACK TO INTERCEPT CLEARED OR PREVIOUSLY ASSIGNED SID TO DESTINATION.