

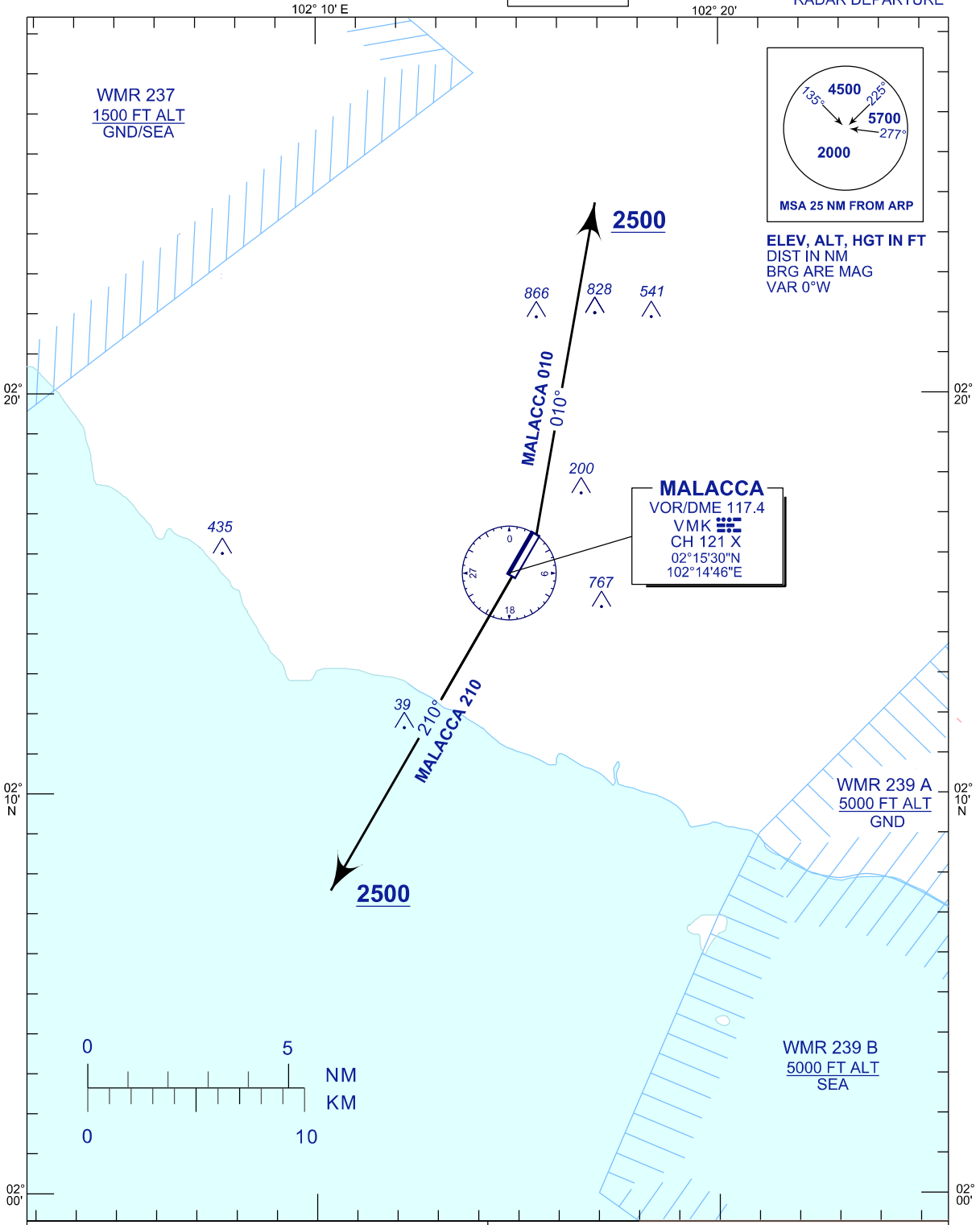
**STANDARD DEPARTURE CHART  
INSTRUMENT (SID) - ICAO**

TRANSITION ALTITUDE  
11 000 FT

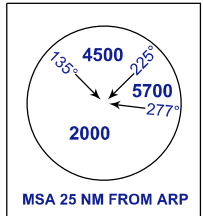
TWR	118.00
SMC	121.60
ATIS	127.45

**MALACCA/MALACCA (WMKM)**

RADAR DEPARTURE



WMR 237  
1500 FT ALT  
GND/SEA



ELEV, ALT, HGT IN FT  
DIST IN NM  
BRG ARE MAG  
VAR 0°W

**MALACCA**  
VOR/DME 117.4  
VMK  
CH 121 X  
02°15'30"N  
102°14'46"E

**RWY 03 - MALACCA 010**

AFTER TAKE - OFF PROCEED ON TR 010° UNTIL PASSING 2500FT, THEN FOLLOW THE ASSIGNED HEADING.

NOTE :

1. MINIMUM CLIMB GRADIENT 4.8 % UNTIL PASSING 5000 FT
2. TURN BEFORE DER IS NOT ALLOWED

**RWY 21 - MALACCA 210**

AFTER TAKE - OFF PROCEED ON TR 210° UNTIL PASSING 2500FT, THEN FOLLOW THE ASSIGNED HEADING.

NOTE :

1. MINIMUM CLIMB GRADIENT 4.5 % UNTIL PASSING 5000 FT
2. TURN BEFORE DER IS NOT ALLOWED