

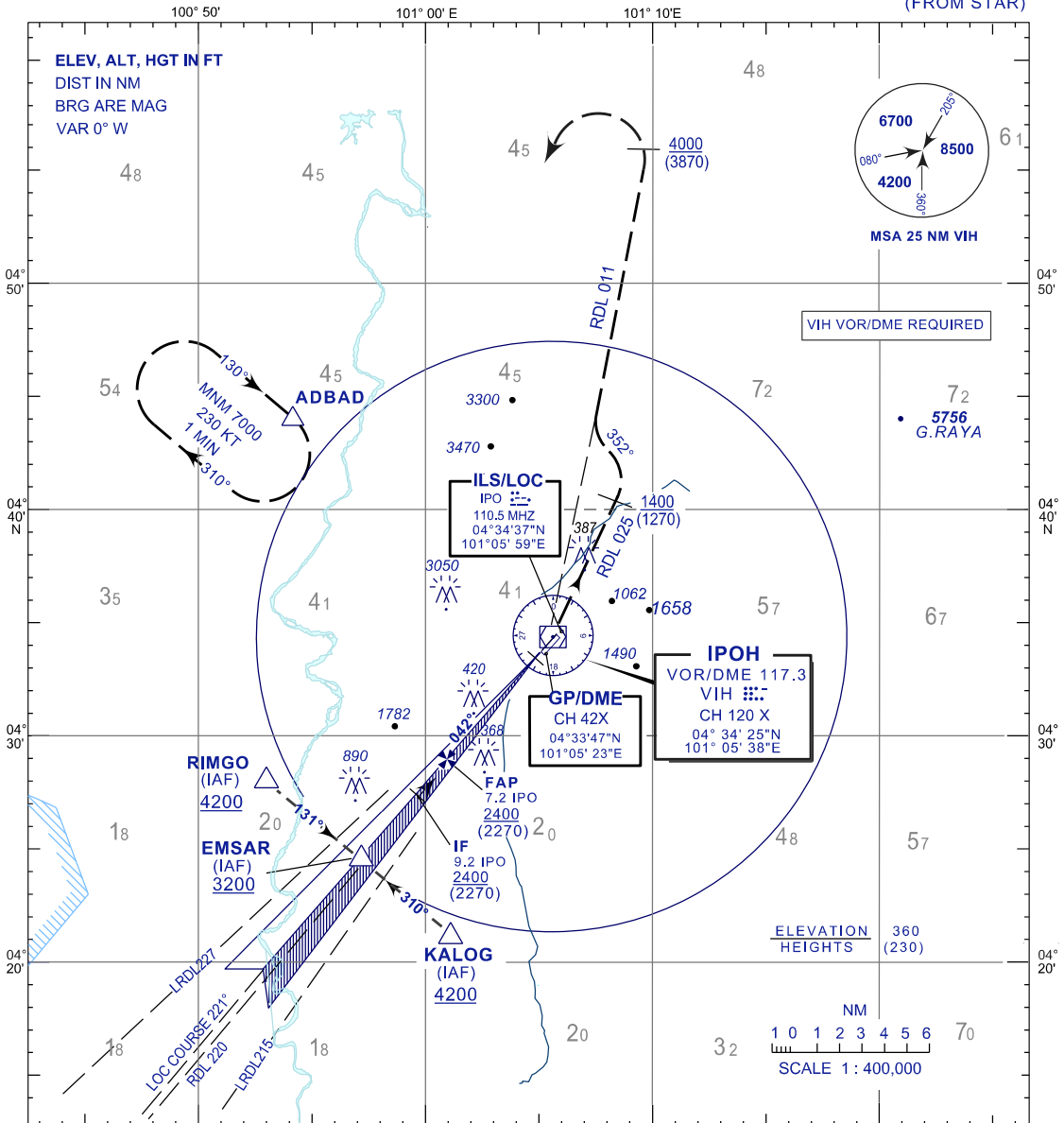
INSTRUMENT APPROACH CHART- ICAO

AERODROME ELEV 131 FT
 HEIGHTS RELATED TO
 THR RWY 04 - ELEV 130 FT

TWR 122.1
 SMC 121.6
 ATIS 127.05

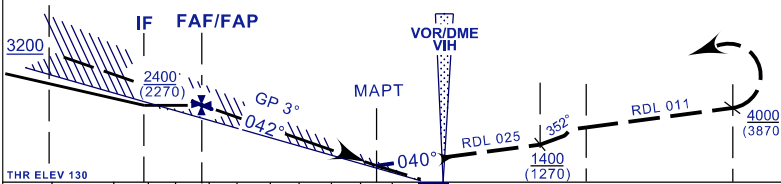
IPOH/SULTAN AZLAN SHAH (WMKI) RWY04

ILS Z/LOC Z (FROM STAR)



TRANSITION ALT 11000

MISSED APPROACH
 CLIMB 040° TO VIH VOR THEN RDL025 UNTILL PASSING 1400FT THEN TURN LEFT 352° INTERCEPT RDL011. CONTINUE CLIMB 7000FT ON PASSING 4000FT TURN LEFT TO HOLD OVER ADBAD OR AS DIRECTED BY ATC



THR ELEV 130
 NM TO/FROM IPO
 NM TO/FROM VIH VOR

OCA/H	A	B	C	D	KT	70	90	120	150
CAT I	365(235)	377(247)	385(255)	396(266)	FAF - MAPT MIN:SEC	3:22	2:37	1:58	1:34
GP INOP	500(370) / 1.5 IPO (2.2 VIH)				RATE OF DESCEND FT/MIN	370	480	640	800
CIRCLING	700(570)/1NM	NOT PERMITTED							

ALTITUDE/HEIGHT ON FINAL APPROACH

DME(IPO)	7.13	6.0	5.0	4.0	3.0	2.0	1.0	0.74
ALT(HGT)	2400(2270)	2040(1910)	1730(1600)	1400(1270)	1090(960)	770(640)	450(320)	365(235)