

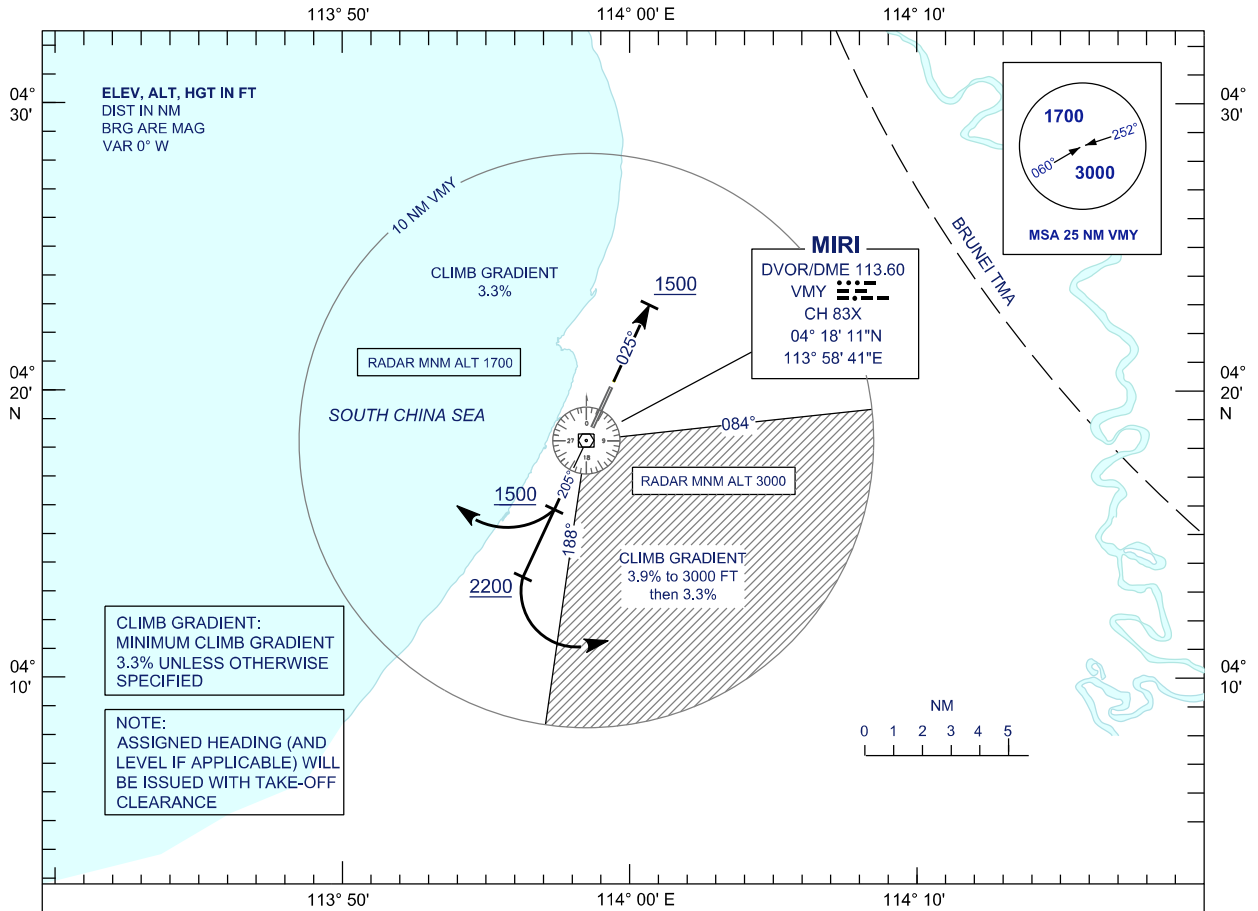
**STANDARD DEPARTURE CHART
INSTRUMENT (SID) - ICAO**

TRANSITION ALTITUDE
11 000 FT

APP 129.9 (P)
122.7 (S)
TWR 123.3
SMC 121.9
CATIS 127.0

**MIRI/MIRI (WBGR)
MIRI RADAR**

RADAR DEPARTURE



**STANDARD RADAR DEPARTURE
MIRI RADAR DEPARTURE**

RWY 20 - WESTERLY DEPARTURE

AFTER TAKE-OFF PROCEED ON TRACK 205° UNTIL PASSING 1500FT, THEN FOLLOW THE ASSIGNED HEADING. CONTACT MIRI RADAR WHEN AIRBORNE.

RWY 20 - EASTERLY DEPARTURE

AFTER TAKE-OFF PROCEED ON TRACK 205° UNTIL PASSING 2200 FT, THEN FOLLOW THE ASSIGNED HEADING. CONTACT MIRI RADAR WHEN AIRBORNE.

RWY 02

AFTER TAKE-OFF PROCEED ON TRACK 025° UNTIL PASSING 1500FT, THEN FOLLOW THE ASSIGNED HEADING. CONTACT MIRI RADAR WHEN AIRBORNE.

RATE OF CLIMB (FT/MIN)												
GROUND SPEED (KT)	130	140	150	160	170	180	190	200	220	240	260	280
GRADIENT 3.3%	434	468	502	535	569	602	635	669	736	803	869	936
GRADIENT 3.9%	513	552	592	631	671	710	750	789	868	947	1026	1105

COMMUNICATION FAILURE:

- * SQUAWK 7600
- * MAINTAIN ASSIGNED HEADING - CLIMB TO MSA OR AT LEAST LAST ASSIGNED LEVEL (IF HIGHER)
- * MAINTAIN MSA OR ASSIGNED LEVEL AS APPROPRIATE FOR 2 MINUTES, THEN CLIMB TO FLIGHT PLAN LEVEL AND INTERCEPT FLIGHT PLAN TRACK (AS AMMENDED BY ATC IF APPLICABLE)