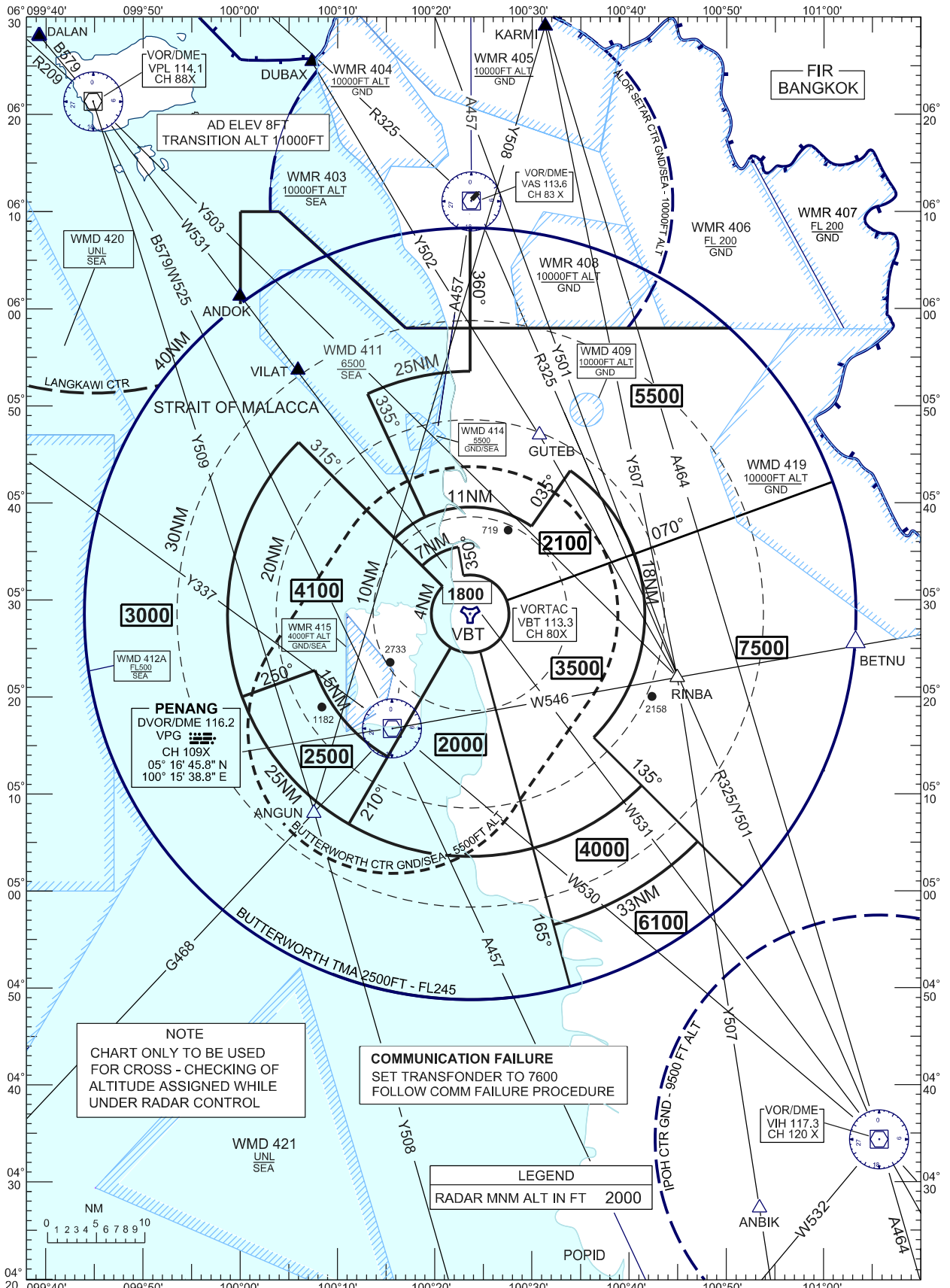


# ATC SURVEILLANCE MINIMUM ALTITUDE CHART



**NOTE**  
 CHART ONLY TO BE USED FOR CROSS - CHECKING OF ALTITUDE ASSIGNED WHILE UNDER RADAR CONTROL

**COMMUNICATION FAILURE**  
 SET TRANSFONDER TO 7600  
 FOLLOW COMM FAILURE PROCEDURE

**LEGEND**  
 RADAR MNM ALT IN FT 2000

CHANGES : REALIGNMENT OF DANGER AREA WMD421  
 ADD ANBIK, OREKA, RINBA, ANGUN, GUTEB TO THE CHART  
 ADD NEW ATS/RNAV; Y501, Y502, Y503, Y507, Y508 THE CHART