

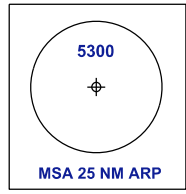
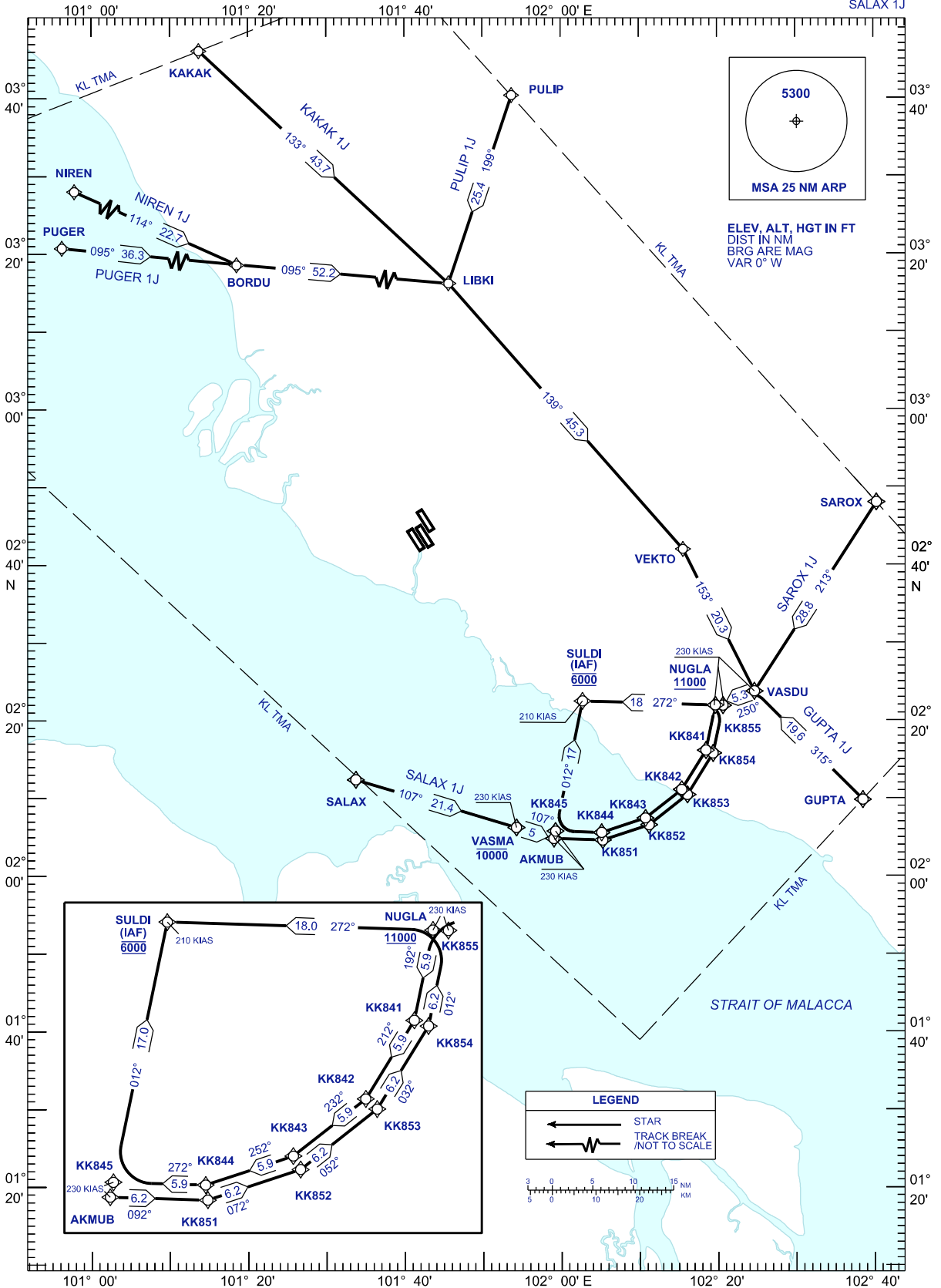
**STANDARD ARRIVAL CHART
INSTRUMENT (STAR) - ICAO**

TRANSITION ALT 11000 FT

APP	121.250	TWR	118.800
	124.200		118.500
	118.650		119.800
	129.850	ATIS	128.050
135.750			

**SEPANG/KL INTERNATIONAL
AIRPORT (WMKK)
RNAV(GNSS) RWY 32R, 32L, 33**

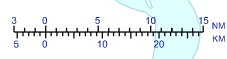
PMS SOUTH
 PUGER 1J KAKAK 1J SAROX 1J
 NIREN 1J PULIP 1J GUPTA 1J
 SALAX 1J



ELEV. ALT. HGT IN FT
 DIST IN NM
 BRG ARE MAG
 VAR 0° W

LEGEND

- ← STAR
- ← TRACK BREAK / NOT TO SCALE



CHANGES: CHANGE BEARING & DISTANCE BETWEEN PUGER TO BORDU,
 CHANGE COURSE BETWEEN NIREN TO BORDU.